

# **Facilities Advisory Committee Space Modification Requests Spring 2016**

May 3, 2016



# Facilities Advisory Committee

## Purpose:

- Provides input and makes recommendations for new facilities, modifications to existing spaces and facilities related issues.
- Reviews, monitors, and develops policies, procedures, guidelines and plans for campus facilities.
- Sends suggestions directly to the committee chair.

## Charge:

- Moderates communication among the campus community on facilities issues/physical plant/growth.
- Reviews facilities space request to ensure proposed projects are aligned with University's strategic plans and in accordance with the space utilization guidelines.
- Reviews campus' rules and regulations affecting access to and use of the campus facilities by campus community.
- Reviews existing policies and practices.

## Facts:

The Committee established in 2010.

- Total requests submitted between Fall 2010 and Fall 2015 – 111
- Completed Requests – 84
- Not Approved Requests – 1
- Awaiting Funds Requests – 23
- New requests for Spring 2016 – 5
- Withdrawn Requests – 3

## Sponsorship / Reporting :

- Vice President of Business and Operations.



# Spivey Hall

## Lobby Restrooms Restoration

### Requested:

- Replace existing bathroom plumbing fixtures with matching brass fixtures
- Clean, spot-grind, polish, and seal all black marble surfaces

### Proposed:

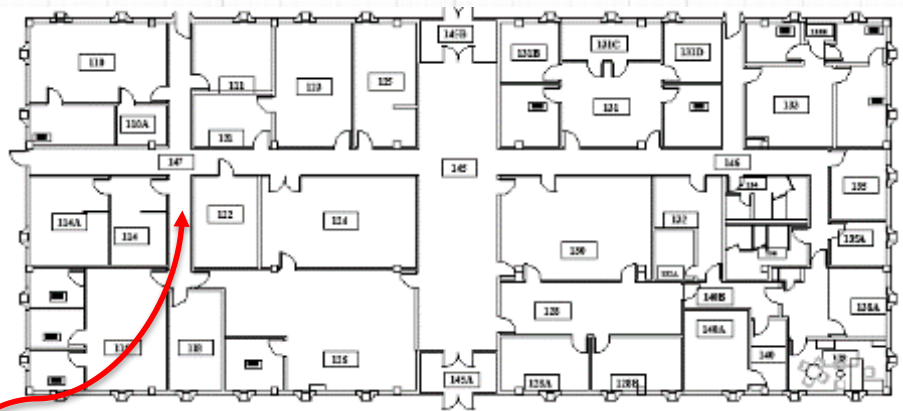
- Check with Spivey Foundation if original style has to be kept.
- Compare cost to replace chrome fixtures against cost for brass
- All following brass items in the restroom have to match (light switch panels, door latches, wall sconces, and etc.)



Existing condition -  
tarnish and spots  
on marble



# Media Printing Hallway Door Installation



Existing

**Requested:**

Install a door to a hallway in Faculty Hall for secure workflow and efficient utilization of office support space for Media Printing



Proposed

**Proposed:**

- Door installation would require:
- Exit light
  - Light switch
  - Panic bar
  - Door with a window for observation and exit safety

# Media Printing

## Power outlets for Lab Tables

### Requested:

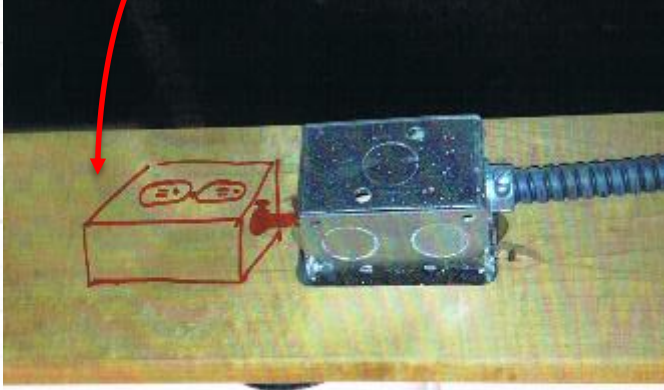
Install duplex AC receptacle on lab tables in labs 120, 122, 123, 184 to correct current setting when electrical cord can be unplugged and disrupt proper function of some technology

### Proposed:

Requestor has funds for the project. Facilities Advisory Committee recommends approval



Existing (B) BACK



Proposed (C) SOLUTION

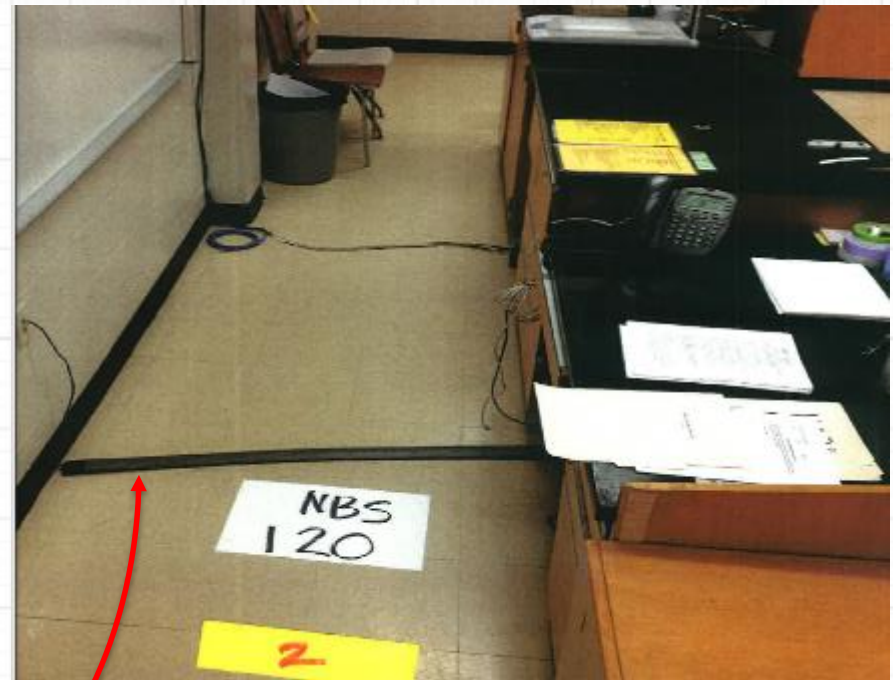




# Media Printing Cable Protection for Cables

## Requested:

Install cable protection trays in labs 120, 122, 123, 184 to protect cables above floor surface and prevent trip hazard



Existing

## Proposed:

Requestor has funds for the project. Facilities Advisory Committee recommends approval



Proposed

# Media Printing Install Concrete slabs

**Requested:**

Construction of two concrete pads near Faculty Hall



Existing

**Proposed:**

Committee does not recommend approval of a larger pad due to safety issues with access to a busiest loading dock area after curb adjustment to become ADA accessible. Small concrete pad is recommended.



Proposed





# Future Special Projects

## CSU East Vacant House

### Current Condition:

Vacant house is of wood and concrete block construction.

Estimated original construction is 1964

Asbestos survey indicates presence of hazardous materials



### Proposed:

Hazardous materials removal ~\$9,300

Adjustment for university use

Existing







# Future Special Projects

## Trammell Property Adoption for New Use and Egress Road Construction





# Future Special Projects

## Trammell Property Adoption for New Use and Egress Road Construction





# Future Special Projects

## Trammell Property Adoption for New Use and Egress Road Construction





# Future Special Projects

## Trammell Property Adoption for New Use and Egress Road Construction



# Future Special Projects

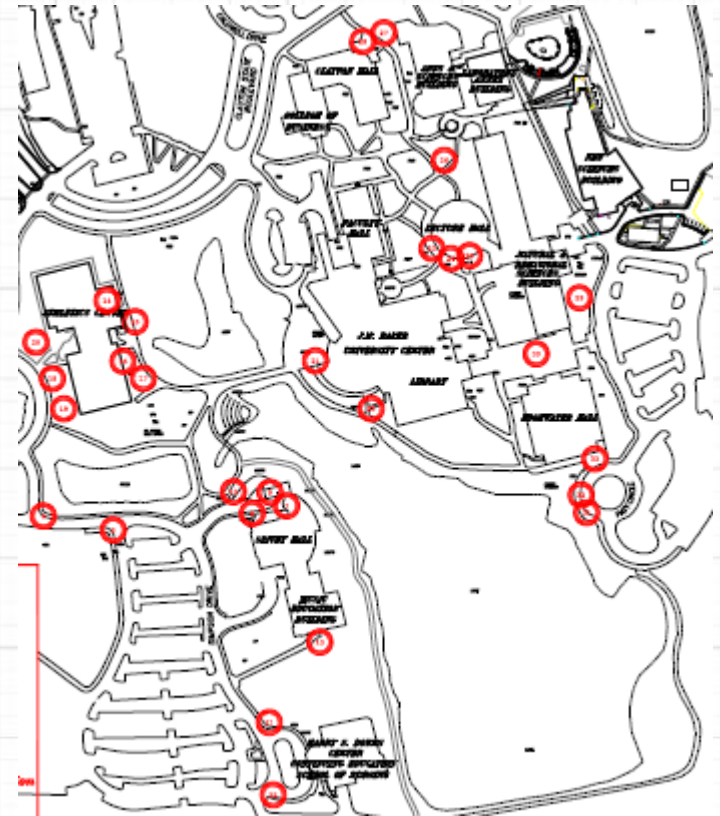
## Concrete Works Campus Wide

### Current Demand:

- Repave sidewalk along lakeside between Continuing Education and Spivey approximately 1,000 linear feet
- Install new sidewalk and correct curb cuts at South side of LDSC near Cooling Tower
- Correct accessibility at Clayton Hall ADA parking
- Resurface concrete to prevent trip hazard

### Proposed:

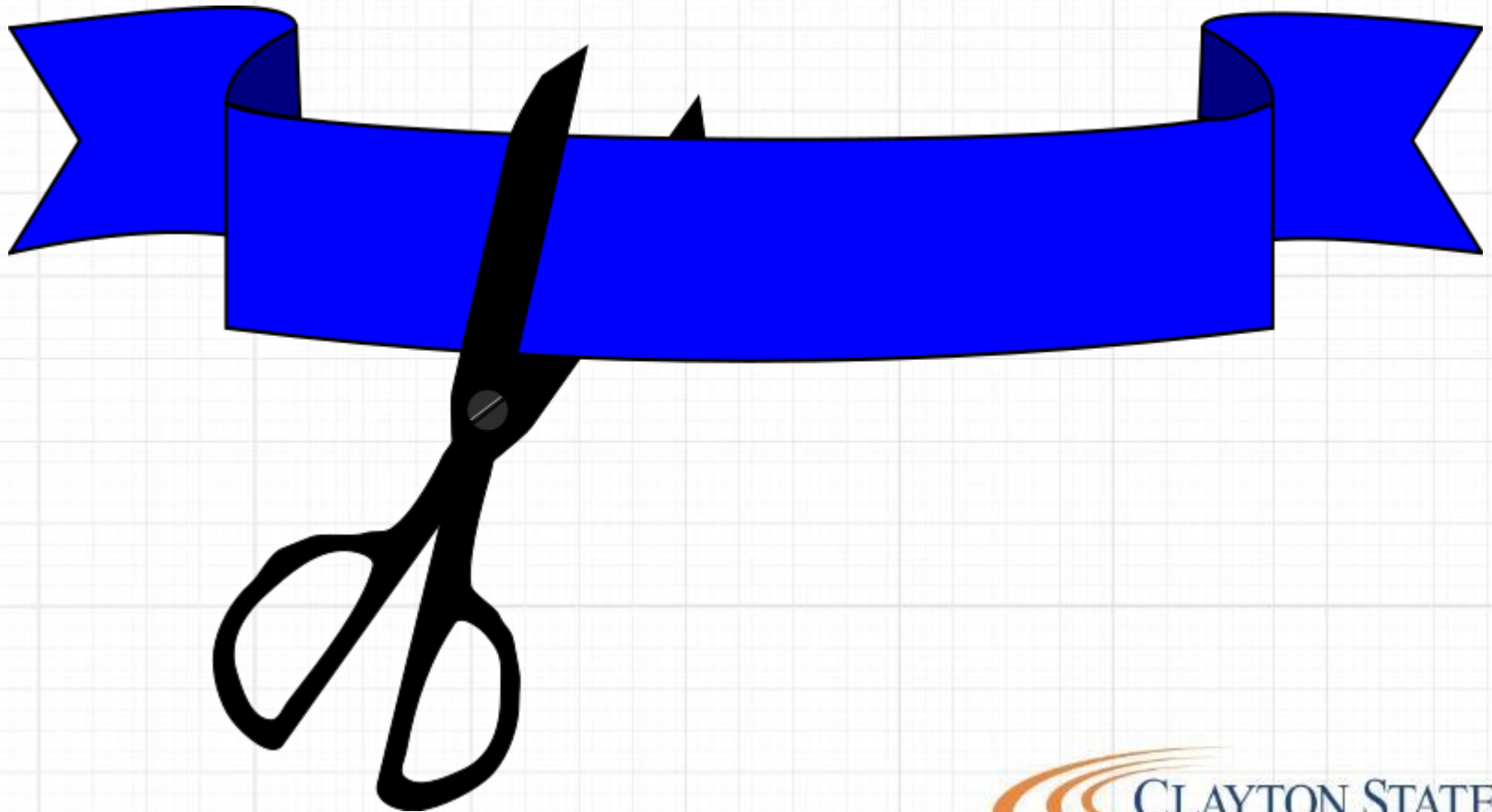
- CE-Spivey sidewalk replacement - \$29,200
- New sidewalk and curb cut adjustment at South of LDSC - \$20,000
- Correct accessibility at Clayton Hall ADA parking - \$26,000
- Resurface concrete Campus Wide to prevent trip hazard - \$8,000



Locations for concrete resurfacing needs



# Completed Projects



# Library Renovation

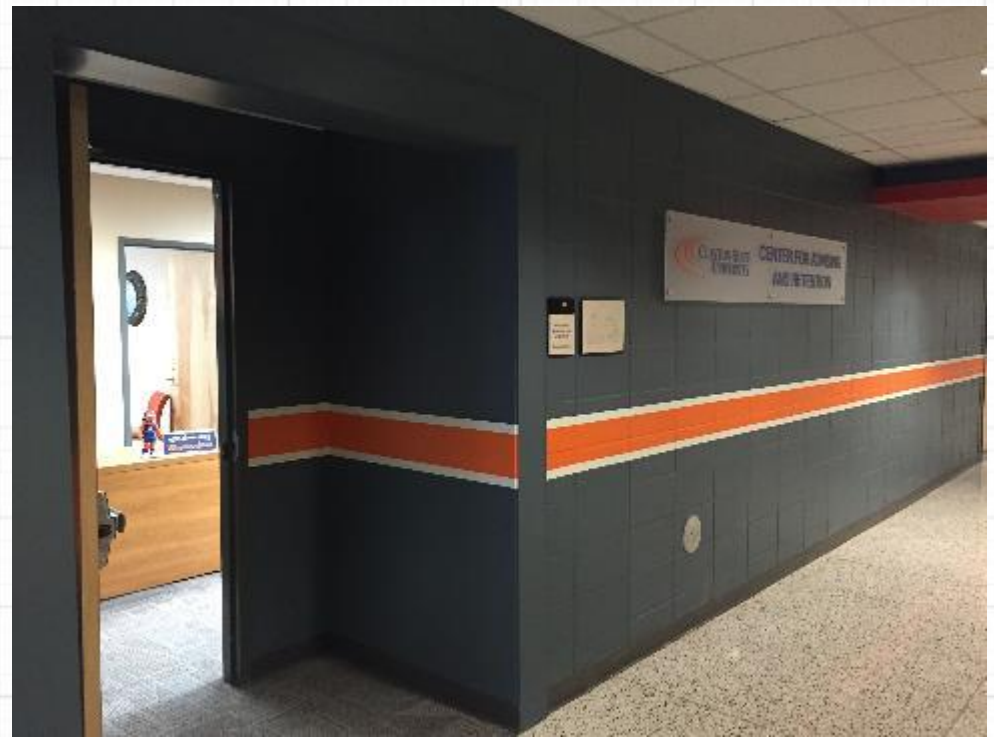
Opening Ceremony  
held Winter, 2016





# Center for Advising and Retention

Completed January, 2016



# Faculty Hall Interdisciplinary Studies Space Adjustment

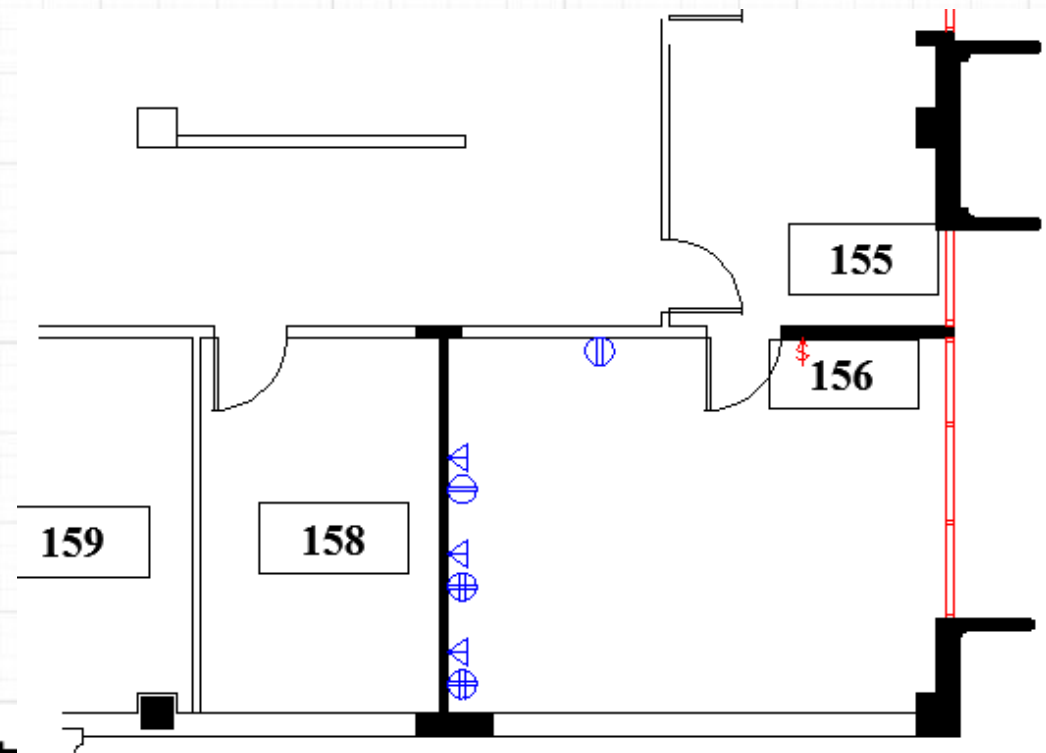
Completed January, 2016



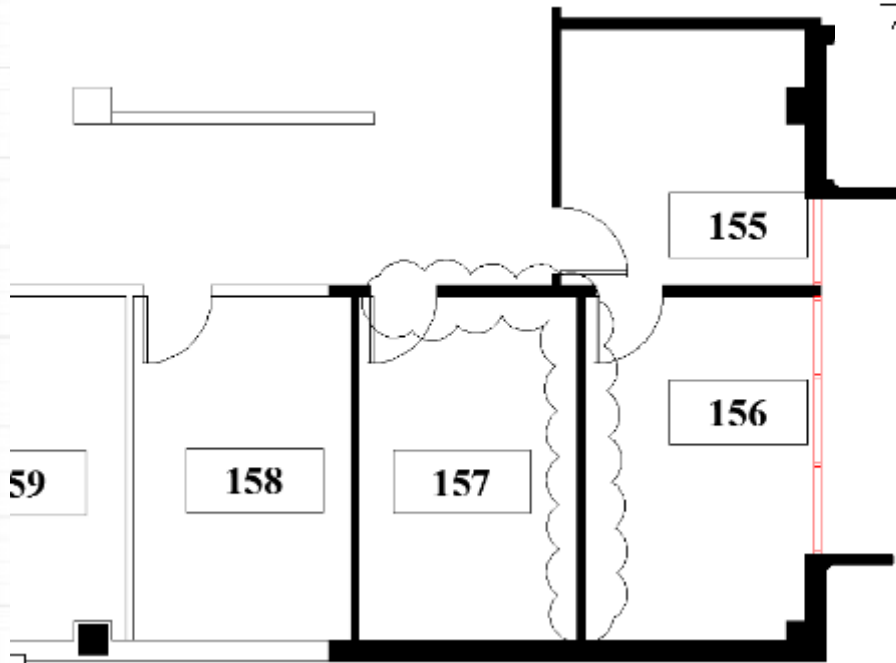


# Library 1<sup>st</sup> Floor IT Vice President Office Reconfiguration

Completed  
November, 2015



After

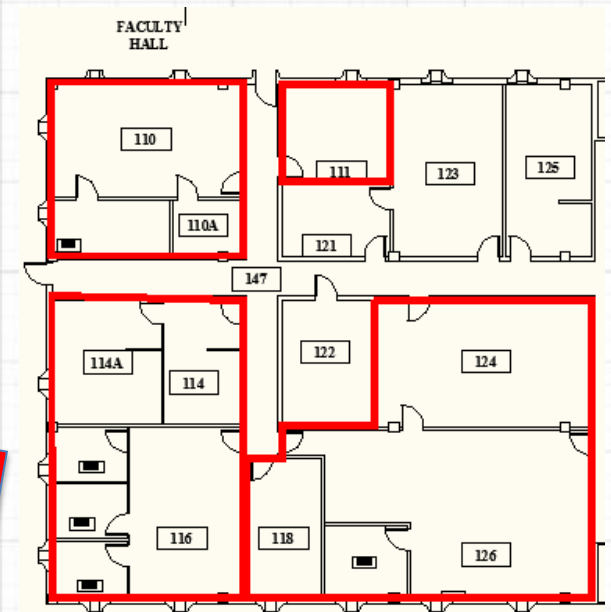


Before

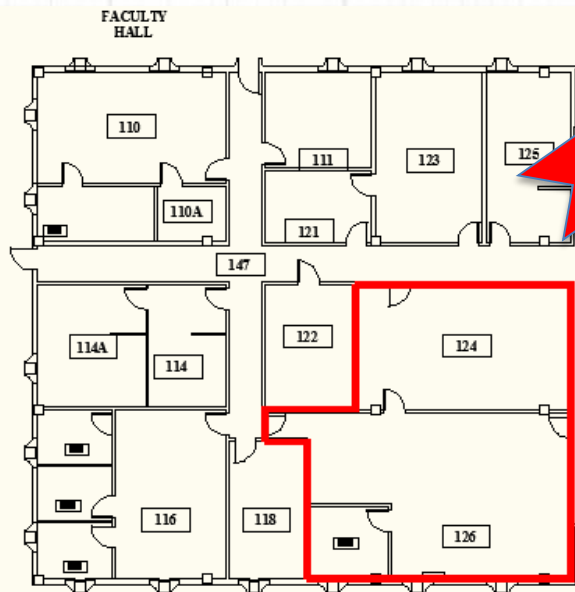


# Media Printing Services relocation to Faculty Hall

Completed December, 2015



Media Printing after space consolidation



Media Printing before space consolidation



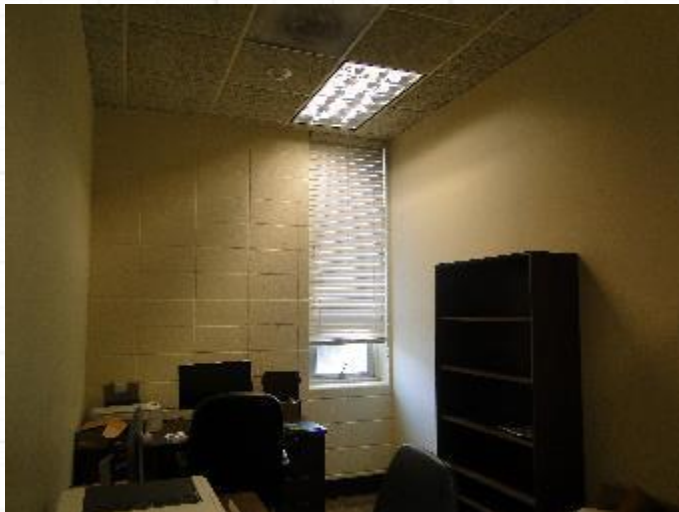
# Lactation Station

Completed  
November, 2015



# Public Safety Suite Expansion

Completed  
November, 2015

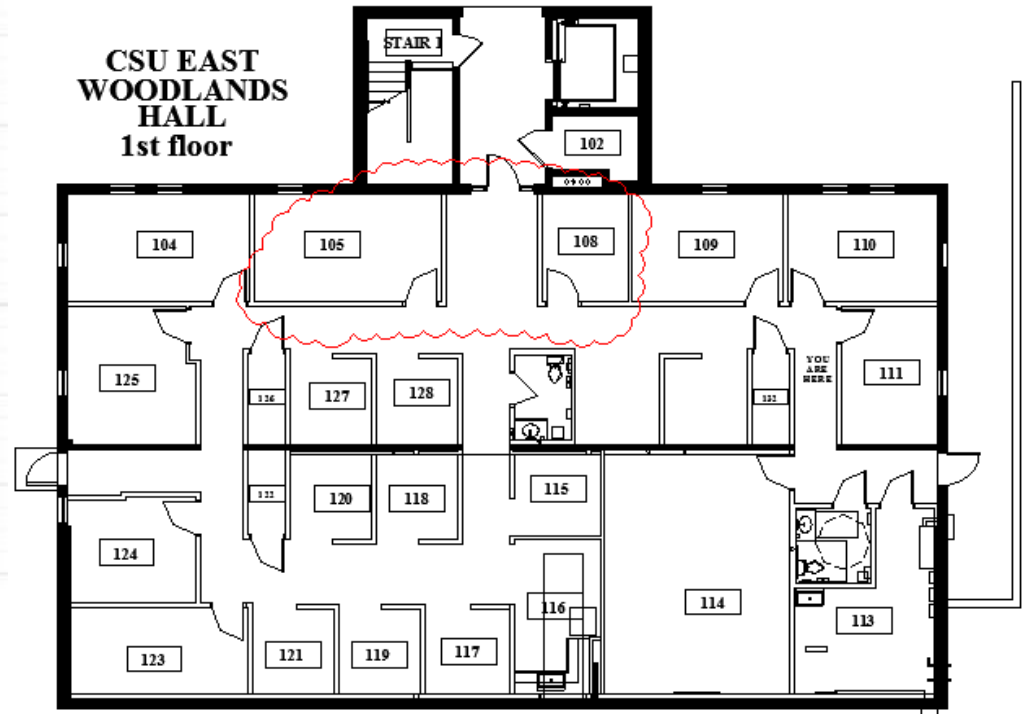




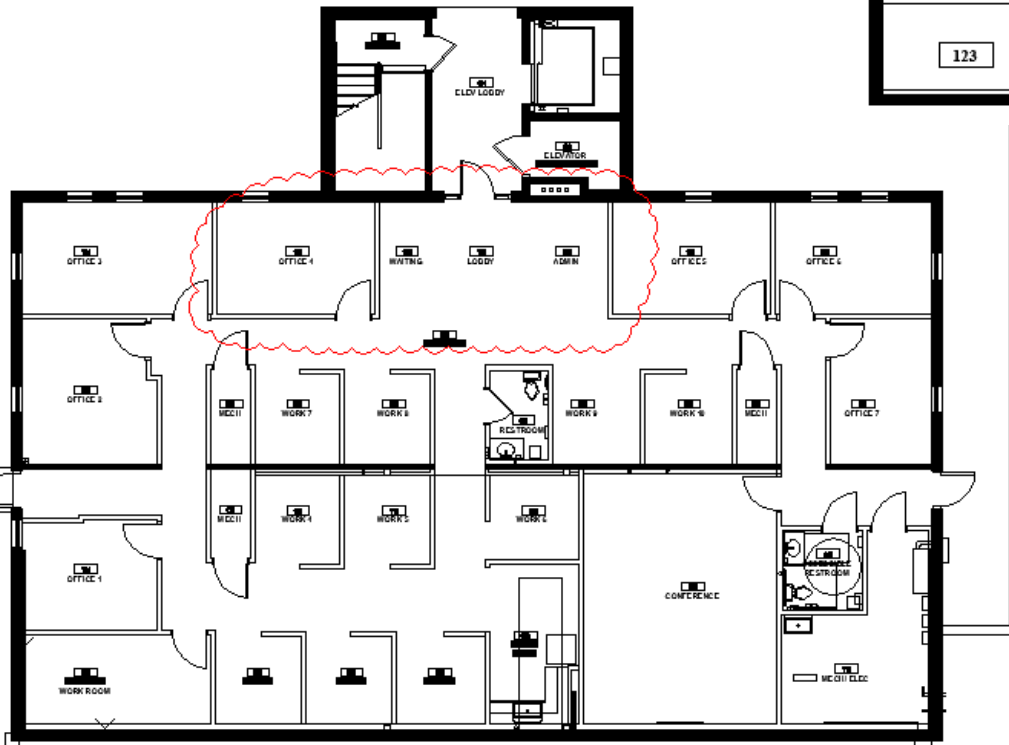
# Woodlands Hall 1<sup>st</sup> Floor Office Area Reconfiguration

Completed  
April, 2016

CSU EAST  
WOODLANDS  
HALL  
1st floor



After



Before



# Lakeview Discovery and Science Center

Completed  
August, 2015

[LDSC Time Lapse](#)





# Questions?

**Please provide any feedback to the  
Facilities Advisory Committee  
by May 13, 2016**