



# **Facilities Advisory Committee Recommendations for 2014 Fall Requests**

## **Presentation to the Administrative Council March 3, 2015**

**FACILITIES . MADE REAL .**

CLAYTON STATE UNIVERSITY

# Facilities Facts About Clayton State University



Fact	Amount
Number of Buildings	24
Number of Acres	186
Number of Classrooms	56
Number of Labs	79

FACILITIES. MADE REAL.

CLAYTON STATE UNIVERSITY

# Aerial Map of Campus



FACILITIES. MADE REAL.

CLAYTON STATE UNIVERSITY



# Clayton State University Master Plan Summary



FACILITIES. MADE REAL.  
CLAYTON STATE UNIVERSITY

# Committee Members



Harun Biswas (Chair)

Jonathan Conner

Myisha Garnes

Nick Kilburg

Bridgette McDonald

Mike Mead

Dennis Miller

Michael Ozment

Scott Stegall

Shannon Thomas

Darren Thomas

Priti Bhatia

Svetlana Soroka

FACILITIES . MADE REAL .

CLAYTON STATE UNIVERSITY

# Mission



- Create a consistent process for the submissions and review of requests for new or modified workspace allocations.
- Ensure that all requests are reviewed fairly and objectively.
- Attempt to balance the needs of each department consistent with institutional requirements, priorities, and the Space Utilization report.



# Review and Approval Process



1. Facilities Modification and Space Allocation Form – requiring approvals through Vice President level.
2. PowerPoint presentations to the committee may be required (format available on the Z: drive).
3. Committee deliberations and recommendations to Vice President of Business and Operations.
4. Submittal to President's Cabinet for final approval or changes.

# Fall 2014

## 9 Requests Submitted



Department	Request	Requestor
Counselling Psychological Services	Expand waiting area, add counselor office and storage room.	Christine Smith
Public Safety	Build out interview room, training room, office and storage room.	Bobby Hamil
IT	Install cage or modular wall with a wall to enhance security in L163.	Shannon Thomas
Testing Center	Space for large lockers for students.	Sharon Long
Continuing Education	Cosmetic upgrade of interior at Lucy Huie Hall.	Barton Bond

FACILITIES . MADE REAL .

CLAYTON STATE UNIVERSITY



# Fall 2014

## 9 Requests Submitted

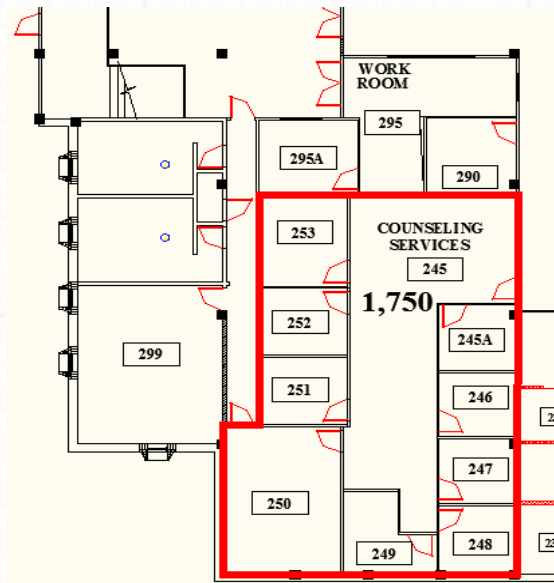


Department	Request	Requestor
Media and Printing	Restore lost square footage and centralize all satellite storage at one location.	Paul Bailey
Athletics	Convert part of the storage room into concession shop.	Tim Duncan
Auxiliary Services	Expand existing service counter and product prep area at Jazzman's.	Norman Grizzell
Auxiliary Services	Reconfigure salad bar into demonstration area and install mobile salad bar.	Norman Grizzell

# Build out additional rooms for CAPS

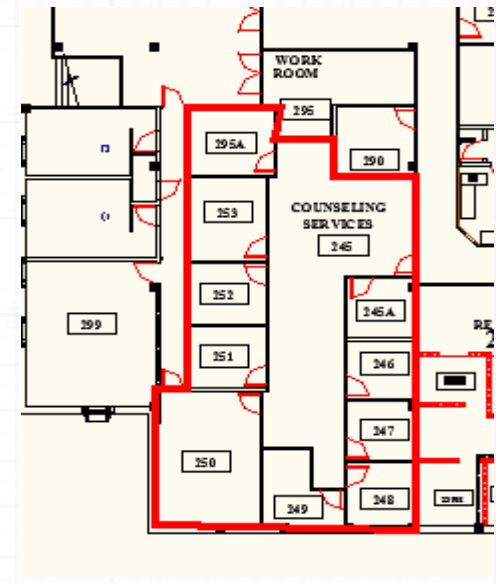
## CAPS

## Option I



### Requested:

Expand waiting area, add counselor office and storage room.



### Recommended:

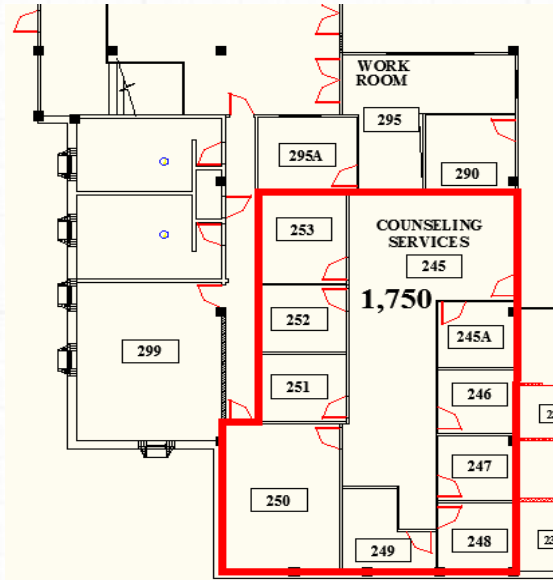
Option I - relocate Public Safety storage room from 295A to new built out area for Public Safety (former UHS remained space) and build a new wall to extend into work room 295.

FACILITIES. MADE REAL.

CLAYTON STATE UNIVERSITY

# Build out additional rooms for CAPS

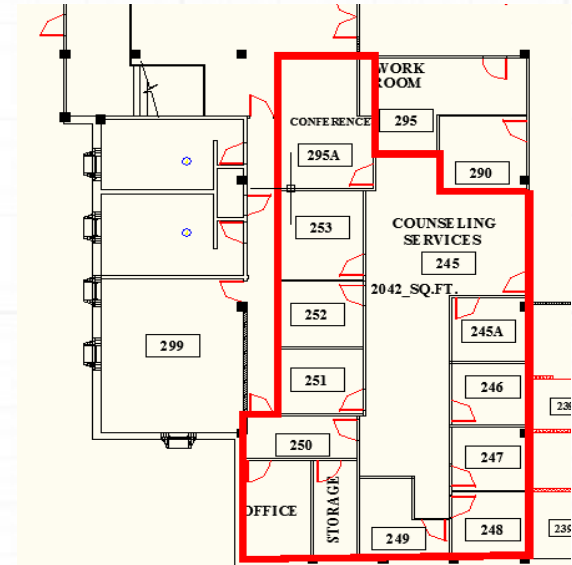
## CAPS



### Requested:

Expand waiting area, add counselor office and storage room.

## Option II



### Recommended:

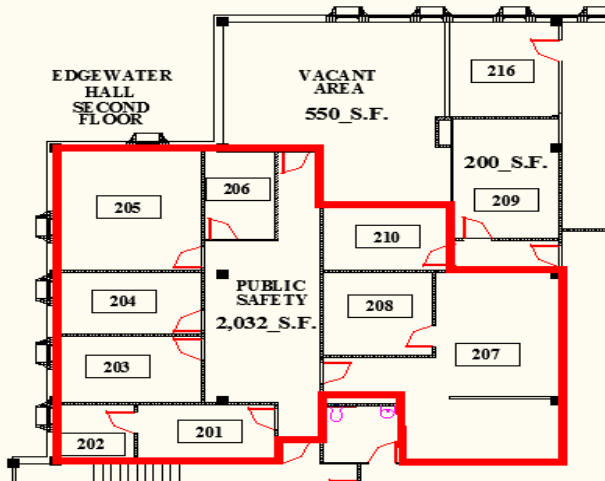
Option II - relocate Public Safety storage room from 295A to new built out area for Public Safety (former UHS remained space), enclose lobby area to create a conference room, build one office and storage room out of existing conference room.

FACILITIES. MADE REAL.

CLAYTON STATE UNIVERSITY

# Build out additional rooms for Public Safety

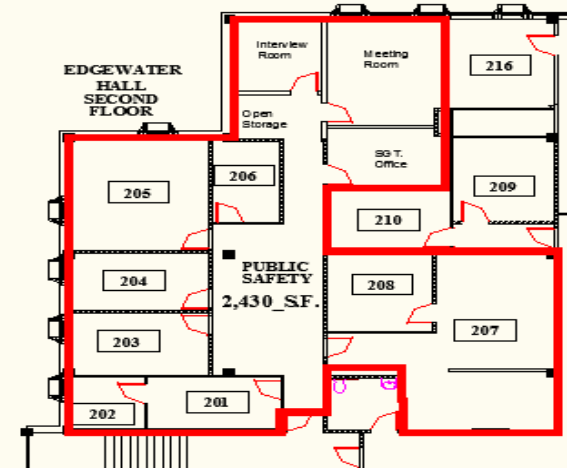
## Public Safety



Existing layout

### Requested:

Build out interview room, training room, office and storage room.



New layout

### Recommended:

Rooms 295A and 210 have to be vacated and relocated into a newly built out space (remainder from UHS).

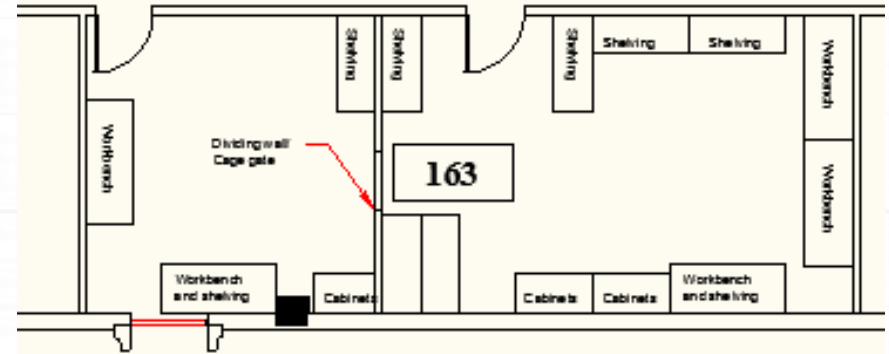
FACILITIES. MADE REAL.

CLAYTON STATE UNIVERSITY



# Enhance security in L-163

## Information Technology



### Requested:

Install cage or modular wall with a door to enhance security in L163.

### Recommended:

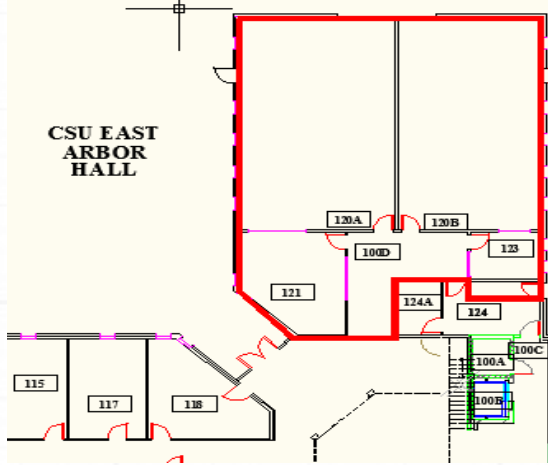
This is a necessary measure for inventory security. Committee recommends approval of the project.

FACILITIES. MADE REAL.

CLAYTON STATE UNIVERSITY

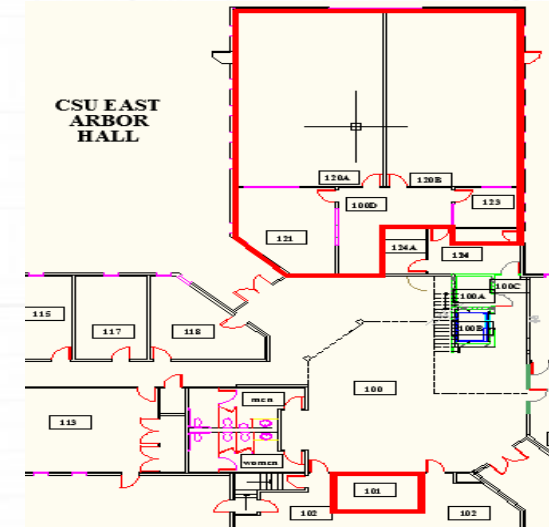
# Space for large lockers in Arbor Hall

## Testing Center



### Requested:

Room for large lockers for students while taking tests in Arbor Hall.



### Recommended:

Recommended to use room 101 next to auditorium 102.

FACILITIES. MADE REAL.

CLAYTON STATE UNIVERSITY

# Cosmetic upgrade for Lucy Huie Hall

## Continuing Education



### Requested:

Cosmetic upgrade of interior at Lucy Huie Hall (classrooms, hallways, restrooms and additional lighting for classrooms).

### Recommended:

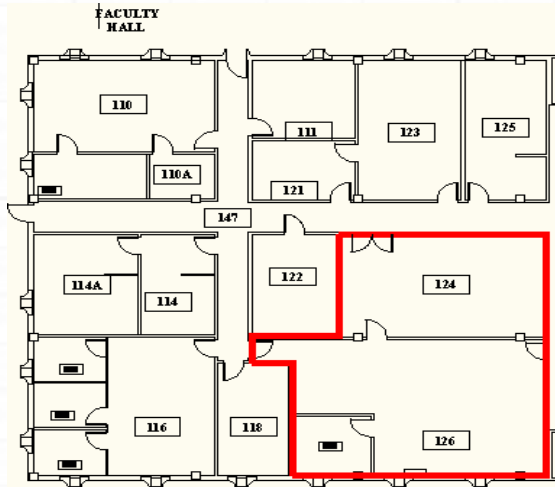
Committee recommends approval of cosmetic renovation of classrooms and hallway. Need to address moisture intrusion to the floor prior to renovation.

FACILITIES. MADE REAL.

CLAYTON STATE UNIVERSITY

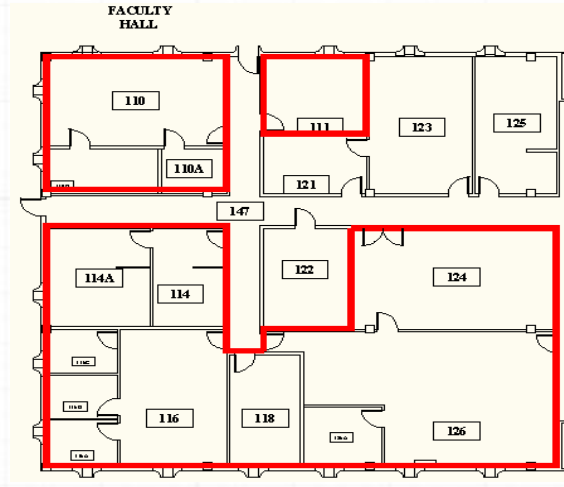
# Centralize Storage and Operations for Media Printing

## Media Printing



### Requested:

Restore lost square footage and centralize all satellite storage at one location.



### Recommended:

Relocate existing occupants to new locations in order to accommodate requested space. Request is contingent on New Science Building completion and relocation of faculty and staff.

FACILITIES. MADE REAL.

CLAYTON STATE UNIVERSITY



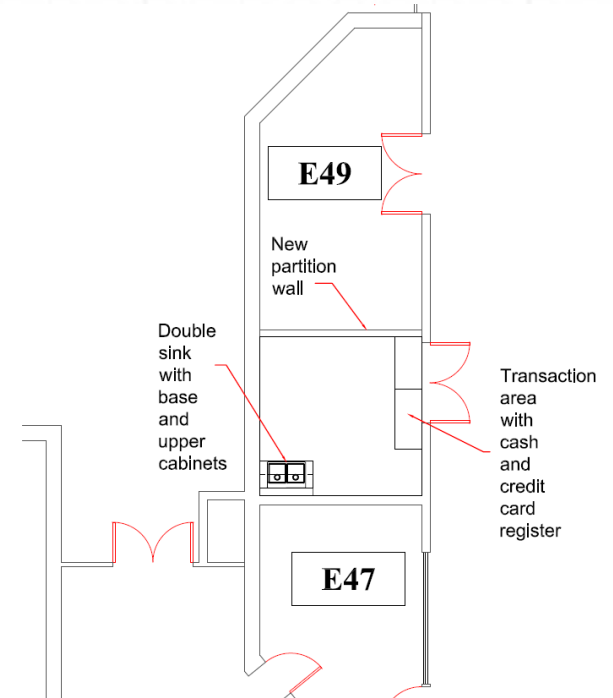
# Concession Shop

## Athletics Center



### Requested:

Convert part of the storage room in Athletics Center into concession shop.



### Recommended:

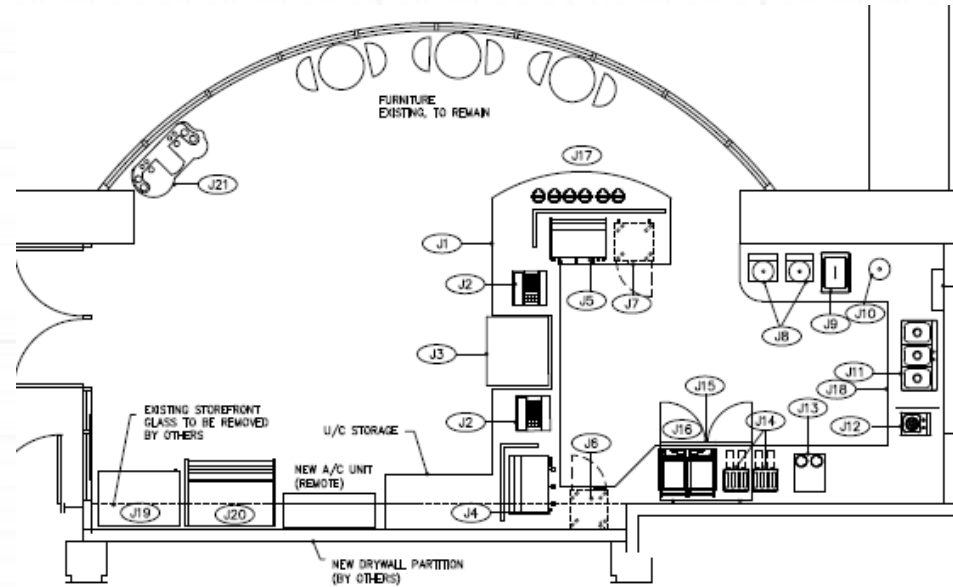
Committee recommends approval.

FACILITIES. MADE REAL.

CLAYTON STATE UNIVERSITY

# Jazzman's Café expansion of service area

## Auxiliary Services



### Requested:

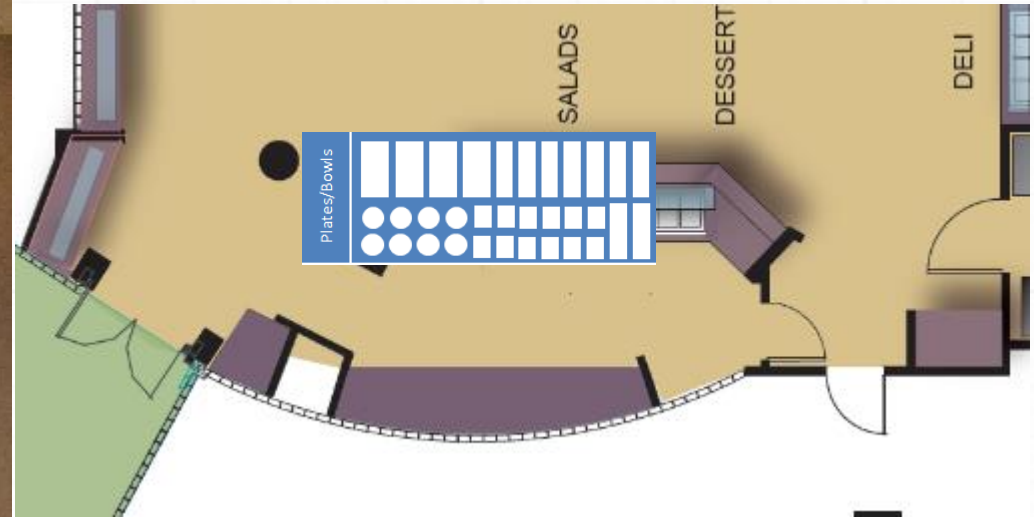
Expand existing service counter and product prep area at Jazzman's.

### Recommended:

Committee recommends approval and contacting design Professional for new layout.

# Dining Services salad bar reconfiguration

## Auxiliary Services



### Requested:

Remove existing salad bar and millwork and reconfigure demonstration area and install mobile salad bar. Create more enclosed storage.

### Recommended:

Committee recommends feasibility performed for the request prior to approval.

FACILITIES. MADE REAL.

CLAYTON STATE UNIVERSITY

# Statistics on Submitted Requests

- Overall 99 requests submitted between 2010 – Fall 2014.
- 9 requests submitted Fall 2014.
- 73 requests completed.
- 21 in progress or awaiting funds.
- 2 requests withdrawn by requestors.

For more detailed overview of 2010 – 2013 requests please visit:

<http://www.clayton.edu/facilities/planningdesign/facilitiescommittee>

FACILITIES . MADE REAL .

CLAYTON STATE UNIVERSITY





# Current Projects

FACILITIES. MADE REAL.

CLAYTON STATE UNIVERSITY

# Projects Completed

## Library Lower Level



FACILITIES. MADE REAL.

CLAYTON STATE UNIVERSITY

# Projects Completed

## Arts & Sciences Mechanical System Upgrade (upper level) Replacement



FACILITIES. MADE REAL.

CLAYTON STATE UNIVERSITY



# Projects Completed

## Loch's Nest



FACILITIES. MADE REAL.

CLAYTON STATE UNIVERSITY



# Other Projects

NSB



*Clayton State University  
Science Building  
Project J-162*



Print #150131173  
Date: 01/31/15  
Lat/Lon: 33.595315 -84.326381  
Order No. 46360  
Aerial Photography, Inc. 954-568-0484

FACILITIES. MADE REAL.

CLAYTON STATE UNIVERSITY



# **Next Steps & Questions**

**Submit any comments via e-mail  
to AVP Biswas  
by March 9, 2015.**

**FACILITIES. MADE REAL.**

CLAYTON STATE UNIVERSITY