



Fact Book
2017-2018

Preface

I abhor averages. I like the individual case. A man may have six meals one day and none the next, making an average of three meals per day, but that is not a good way to live.

Louis D. Brandeis

The Office of Institutional Research is responsible for consistent, accurate, and timely official reporting of Clayton State institutional information; using research and analysis in support of institutional management, assessment and planning; to facilitate decision-making and institutional improvement.

The 2017-2018 FACT BOOK documents the characteristics of Clayton State University and the factors that cause change in these characteristics in order to inform strategic and long-range planning efforts.

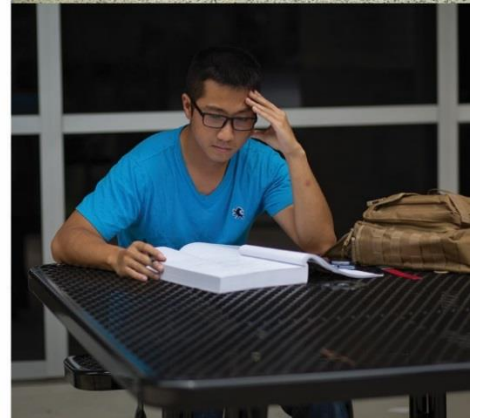
Every effort has been made to ensure that the data contained in this document are accurate and easy to use. Prior to use of the data in policy development and/or analysis, you may wish to contact our office to ensure that you receive any post-publication changes.

Narem Reddy, Ph.D.
Dean of Institutional Research and Budgets
Clayton State University
University Center 215
2000 Clayton State Boulevard
Morrow, GA 30260
678-466-4100

Table of contents

Our University.....	5
University History.....	6
Mission of the University.....	8
Strategic Plan 2022.....	9
Organization Charts for the Upcoming Fiscal Year.....	10
President’s Cabinet.....	11
Provost Level Organization Charts for Upcoming Fiscal Year.....	12
Accreditations and Approvals.....	19
Degrees and Majors Authorized.....	20
Fall Enrollment History and Academic Highlights.....	22
Year in Review.....	24
Legends/Mythology.....	28
Our Students.....	31
Five Year Enrollment at Clayton State University.....	32
Fall Semester Full-Time Equivalency.....	35
Spring Semester Full-Time Equivalency.....	36
Summer Semester Full-Time Equivalency.....	37
Enrollment by Student Status.....	38
Fall Enrollment by Ethnic Group.....	41
Enrollment by Gender and College.....	42
Enrollment by Age.....	43
Enrollment by Full-Time/Part-Time Status.....	44
Student Course Loads.....	45
Enrollment by Student Major and College.....	46
Student Credit Hours.....	48
New Student Enrollment.....	51
First Time Full-Time Freshmen.....	55
Fall Enrollment by Georgia County.....	59
Fall 2017 Enrollment by State.....	60
Fall 2017 Enrollment by Country of Origin.....	61
Our Faculty.....	63
2017–18 Full-Time Instructional Faculty.....	64
Fall 2017 Full-Time Instructional Faculty.....	71
2017-18 Graduate Faculty.....	75
2017-18 Instructional Faculty Committee Memberships.....	76
Our Finances.....	79
Tuition Revenue.....	80
Grants & Contracts by Type.....	81
Education and General Fund Expenditures by Function.....	82
Our Graduates.....	83
FY 2015 – 2017 Degrees Conferred.....	84
Survey of Graduating Students.....	89

Our University



University History

Clayton State University opened in 1969 as Clayton Junior College, with Dr. Harry S. Downs as the founding president. The Board of Regents of the University System of Georgia elevated the institution to baccalaureate status (as Clayton State College) in 1986, to university status (as Clayton College & State University) in 1996 and approved the present name on May 18, 2005.

Upon the retirement of Harry Downs in January 1994, Dr. Richard A. Skinner became the University's second president. In June 1999, Skinner left Clayton State to head the University System of Georgia's new distance learning initiative, Georgia GLOBE. Michael F. Vollmer, Clayton State's acting Vice President for Fiscal Affairs and former Interim President of Middle Georgia College, served as Interim President for one year.

In April 2000, Dr. Stephen R. Portch, Chancellor of the University System of Georgia, announced that the Board of Regents had selected Dr. Thomas K. Harden as the University's new president, effective in June of that year. When President Harden was named chancellor of the University of Wisconsin Green Bay in December 2008, Dr. Thomas J. Hynes, Jr., provost of the University of West Georgia, was named interim president of Clayton State, starting in May 2009. On Feb. 9, 2010, the Board of Regents announced that Hynes' appointment, as president of Clayton State, had been made permanent.

The beginning of the University can be traced to 1965 when the Board of Regents authorized three new junior colleges for the University System, one of which was designated for south metropolitan Atlanta. The Board considered several locations in the region, and chose the present site in Clayton County because of the unique combination of natural beauty and easy access to the then recently completed Interstate 75. The citizens of Clayton County subsidized the initial construction of the state institution by passing a bond issue for nearly \$5 million. Construction of the new campus began in fall 1968, and the doors opened to 942 students less than a year later on September 30, 1969.

In 1981, the University added a technical division offering applied associate degrees and certificates in cooperation with the Georgia Department of Technical and Adult Education. Five years later Clayton State began its baccalaureate mission with programs in business administration and nursing. The institution has continued to add majors at the bachelor's level while maintaining some associate degree programs. Through the establishment of the Bachelor of Applied Science degree, Clayton State emerged as a national leader in promoting opportunities for graduates from applied associate degree programs to "bridge" to bachelor's degrees with little, if any, loss of credit.

Five years after initiating its baccalaureate programs in 1986, Clayton State opened the doors to the finest small performance facility in the southeastern United States, Spivey Hall. Now, 20 years later, Spivey Hall retains its local, national and international reputation by presenting the best in jazz and classical music and an education outreach program that serves thousands of schoolchildren from throughout metro Atlanta annually.

Clayton State now enrolls 7,000+ students in degree credit programs that, in the words of the University's mission, provide "career-oriented education with a solid liberal arts foundation." Current bachelor's degree majors include; Accounting (B.B.A.), Administrative Management (B.A.S.), Biology (B.S.), Chemistry (B.S.), Communications and Media Studies (B.A.), Computer Science (B.S.), Criminal Justice (B.S.), Dental Hygiene (B.S.), English (B.A.), Film Production (B.A.), General Business (B.B.A.), Health Care Management (B.S.), Health & Fitness Management (B.S.), Health Sciences (B.S.), History (B.A.), Homeland Security/Emergency Management (B.A.S.), Information Technology (B.I.T.), Information Technology (B.S.), Integrative Studies (B.S.), Legal Studies (B.S.), Liberal Studies (B.A.), Management (B.B.A.), Marketing (B.B.A.), Mathematics (B.S.), Middle Level Education (B.A.), Nursing (B.S.N. & RN to B.S.N.), Performing Arts (B.A.), Philosophy (B.A.), Political Science (B.S.), Psychology and Human Services (B.S.), Sociology (B.S.), Supply Chain Management (B.B.A.), Technology Management (B.A.S.). Several other baccalaureate programs are currently under development.

On November 16, 2005, Clayton State University's first graduate level program, the Master of Arts in Liberal Studies, was approved by the Board of Regents of the University System of Georgia, opening the door to a whole new world of meeting the educational needs of students and citizens in metro Atlanta. The Master of Arts in Liberal Studies is the only degree of its kind in the state, and is designed to give students with highly focused undergraduate degrees the opportunity to explore a more multidisciplinary approach. A second graduate program, the Master of Science in Nursing, was approved by the Board of Regents in June 2006, a third, the Master of Health Administration, was approved in August 2006, and a fourth, a Master of Business Administration, in January 2007. The Board of Regents approved the University's fifth and sixth graduate programs, a Master of Arts in Teaching in English and a Master of Arts in Teaching in Mathematics, in October 2008. Graduate programs in Archival Studies (2009) and Psychology (2010) are the University's seventh and eighth master's programs.

In January 1998, Clayton State became the first public university in the Southeast and one of the first in the nation to issue notebook computers to all students at all levels in all majors. This "Information Technology Project" has transformed the campus and made Clayton State a national pioneer in "ubiquitous computing."

The James M. Baker University Center, Clayton State's signature building, was completed in August 2004 and named in honor of Clayton State alumnus James M. "Jim" Baker in November 2005, and provides the University with a true "Center" for student life. The building contains a food service area, a help desk for servicing notebook computers, state-of-the-art visual technology classrooms, offices and enhanced learning facilities including wireless capabilities and more than 2,000 data drops.

In a six week period between August and October 2008, the University dedicated three new buildings; the University's first student housing (Laker Hall), the Student Activities Center and a new building for the AACSB-accredited School of Business. The new annex to the Natural and Behavioral Sciences Building (which was itself renovated in 2011), the Laboratory Annex Building, added more laboratory space for science classes and opened in January 2011.

The past several years at Clayton State have also been highlighted by the establishment of the first joint state and federal archives facilities adjacent to campus, the institution of a comprehensive strategic planning process, and the reaffirmation of the University's accreditation by the Commission on Colleges of the Southern Association of Colleges and Schools (SACS).

Clayton State University is an NCAA Division II member, competing in one of the top conferences in the nation at that level - the Peach Belt Conference. The Clayton State Lakers have enjoyed much success in their 20-year history, capped during the 2010/2011 season by the women's basketball team winning the national championship and finishing 35-1. Clayton State currently fields athletic teams in; men's and women's soccer, men's and women's cross country, men's and women's basketball, men's and women's indoor track, men's and women's outdoor track, men's golf and women's tennis.

Source: University History, About Clayton State

Mission of the University

Clayton State University cultivates an environment of engaged, experienced-based learning, enriched by active community service, that prepares students of diverse ages and backgrounds to succeed in their lives and careers.

Through a distinctive combination of proven and innovative methods of teaching and learning, Clayton State University will excel in preparing students from many walks of life to meet the challenges of living and working in a dynamic, global society.

Clayton State University is committed to:

- Creating an outstanding educational experience that stimulates intellectual curiosity, critical thinking, and innovation.
- Engendering a spirit of openness, understanding, collaboration, and mutual respect throughout the University.
- Fostering learning that engages students, faculty, staff, alumni, and the greater community.
- Expanding and allocating resources strategically according to Mission and Values, to support overall institutional effectiveness.
- Providing an inviting and supportive campus community for faculty, staff, and students.
- Repositioning Clayton State University in the higher education marketplace and beyond.

Source: Mission of the University, About Clayton State

Strategic Plan 2022

Positioning the University for continued success during a period of dramatic change in higher education

Vision

To become a national model for university-based community engagement and for equipping students with the knowledge, skills, and motivations for learning and success.

Mission

Through teaching, scholarship and service, we provide an environment of experience-based learning, enriched by active community engagement that prepares an increasing number of students from all walks of life to succeed in a diverse society.

Core Values

- **Collegiality:** We treat each other with respect and work together in a spirit of inclusiveness, collaboration and teamwork to serve others and reach common goals.
- **Excellence:** We give our best effort and seek continuous improvement in all our activities.
- **Innovation:** We are open to new ideas and creative methods for solving problems.
- **Integrity:** We promote ethical behavior, taking responsibility for our attitudes, actions and results.
- **Transparency:** We support open, honest and continuous communication.

Strategic Priorities

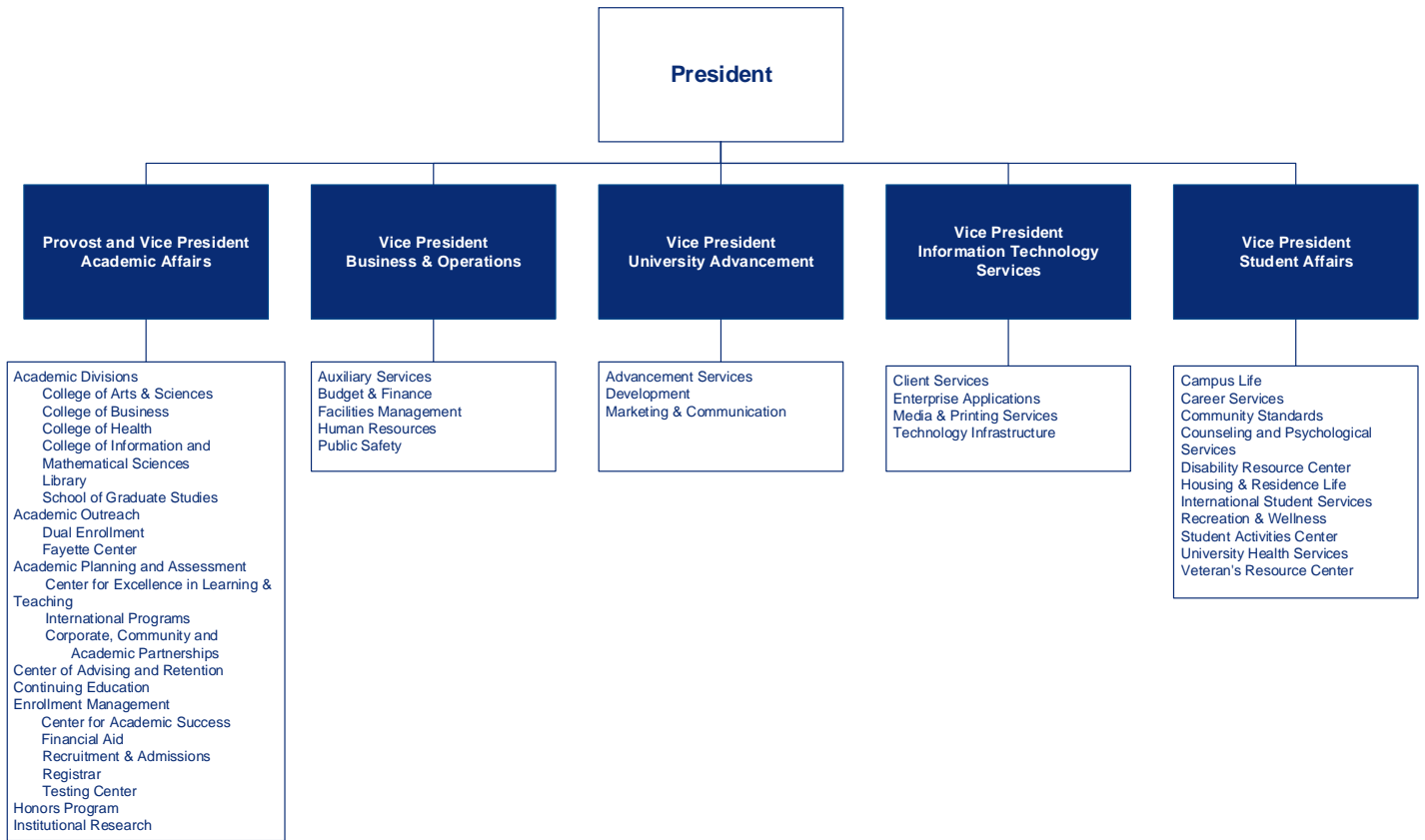
Clayton State University is committed to:

1. Increase enrollment, retention, and graduation rates
2. Increase external funding
3. Build brand through community engagement and program development focused on career preparation and success
4. Promote the brand through an integrated marketing communication program
5. Advance innovation in experiential teaching styles, methods of delivery and research
6. Continue investing in infrastructure improvements

Source: Clayton State University's Strategic Plan <http://www.clayton.edu/strategic-plan-2022>

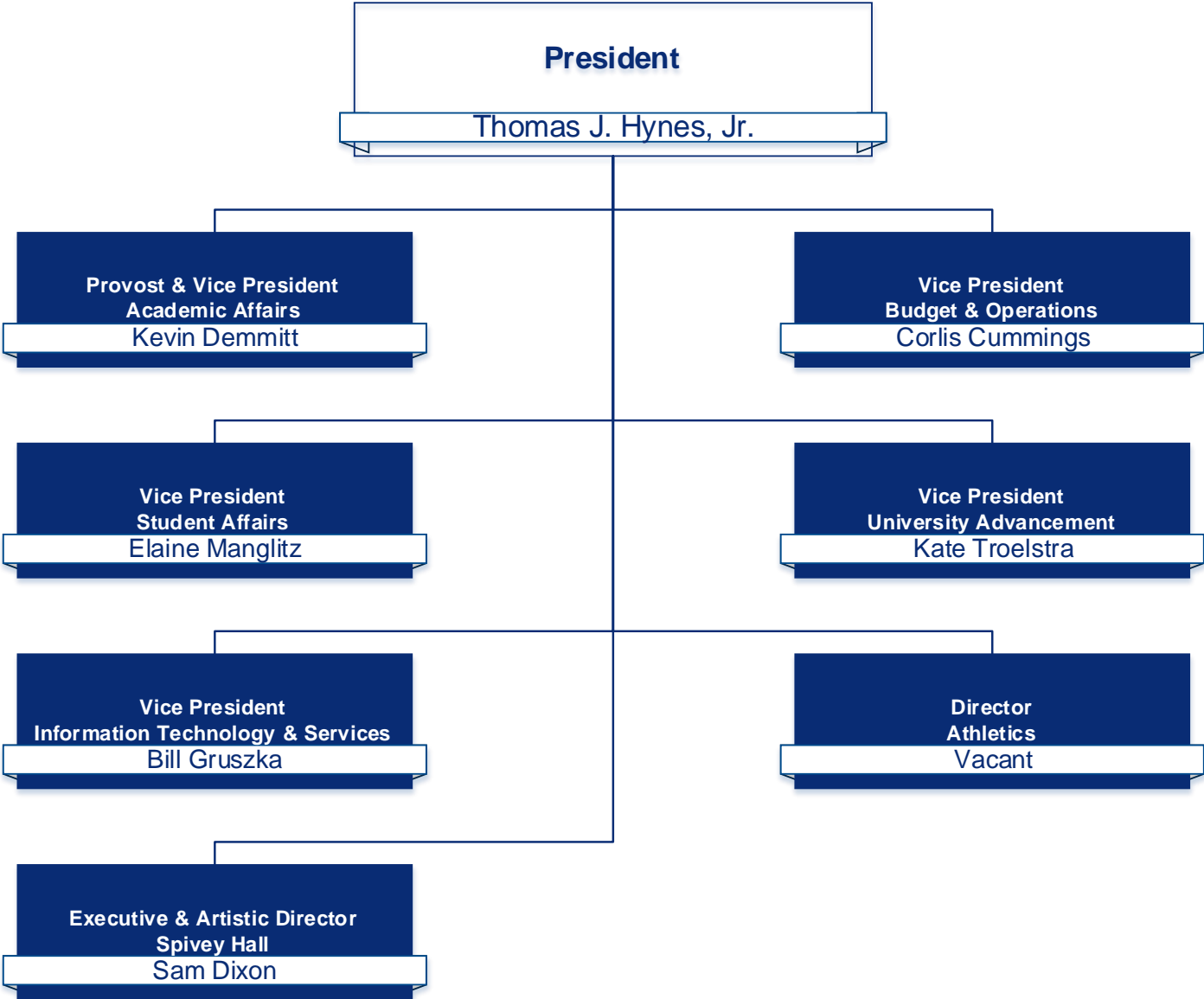
Organization Charts for the Upcoming Fiscal Year

Effective 7/1/2018



President's Cabinet

Effective 7/1/2018



Provost Level Organization Charts for Upcoming Fiscal Year

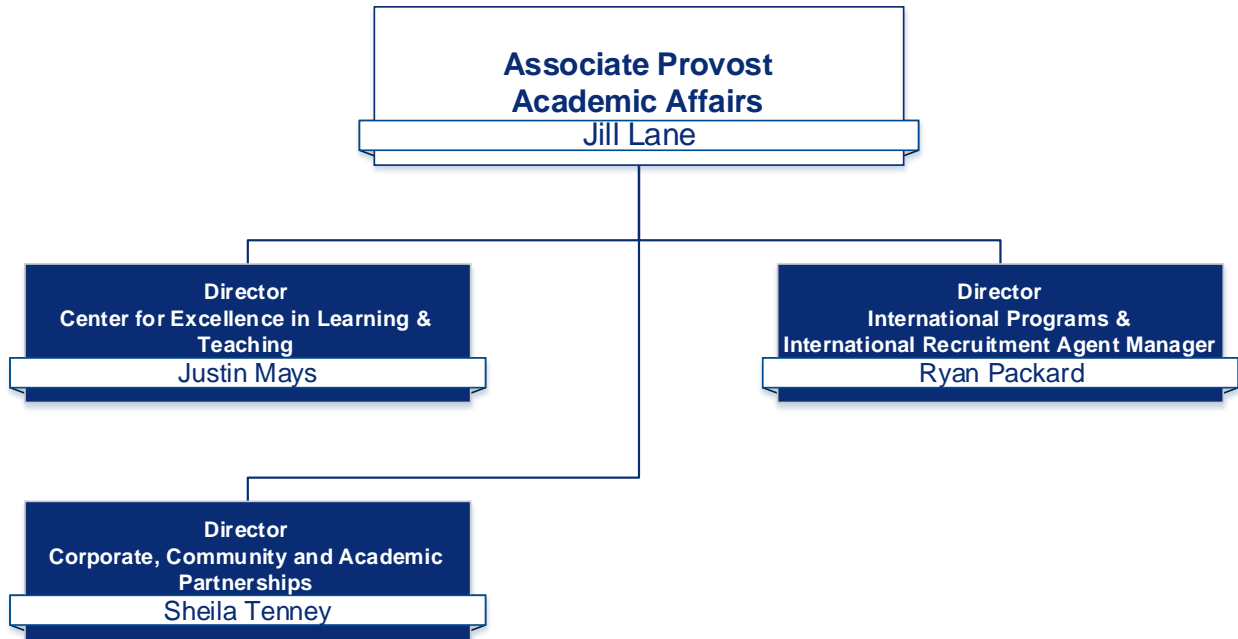
Administrators & Deans

Effective 7/1/2018



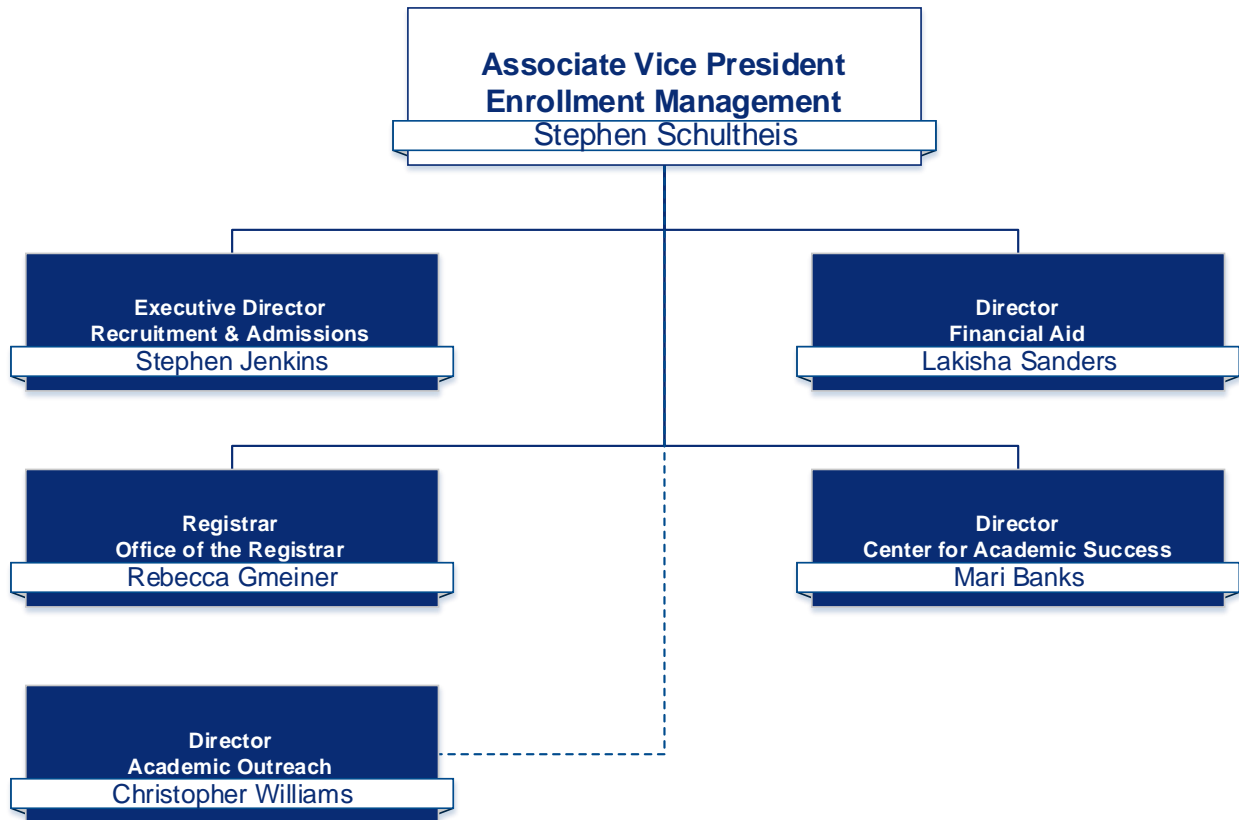
Academic Planning and Assessment

Effective 7/1/2018



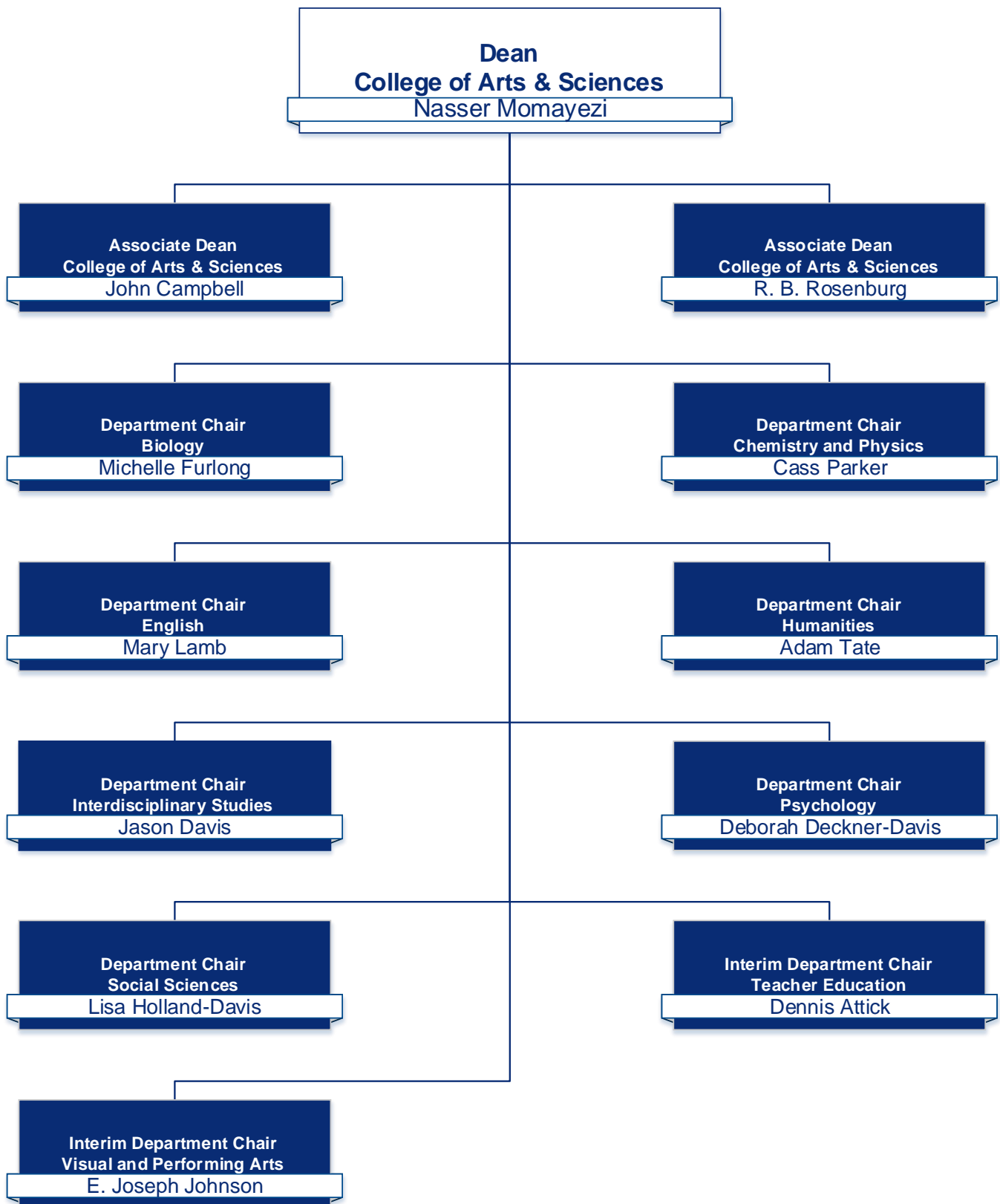
Enrollment Management

Effective 7/1/2018

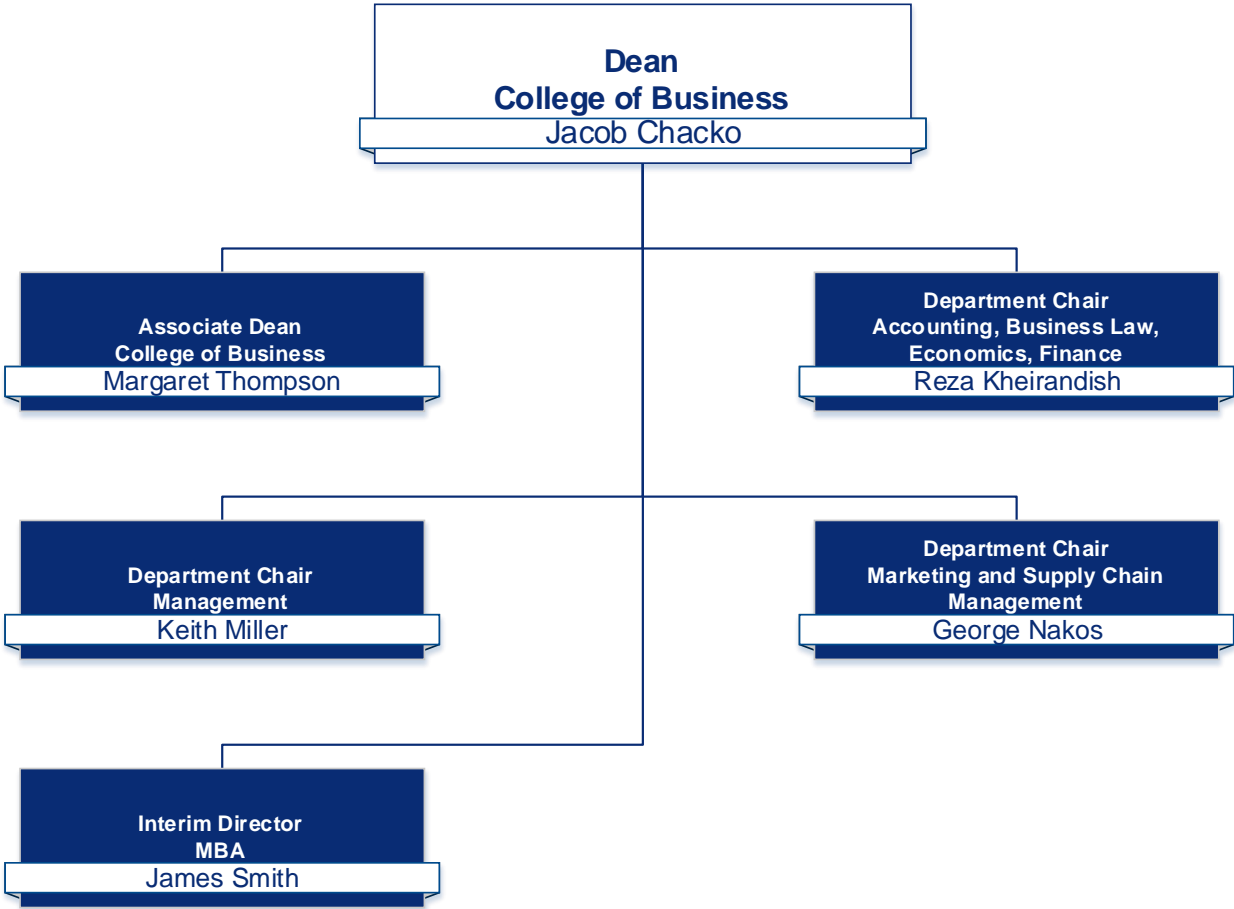


Undergraduate Academics

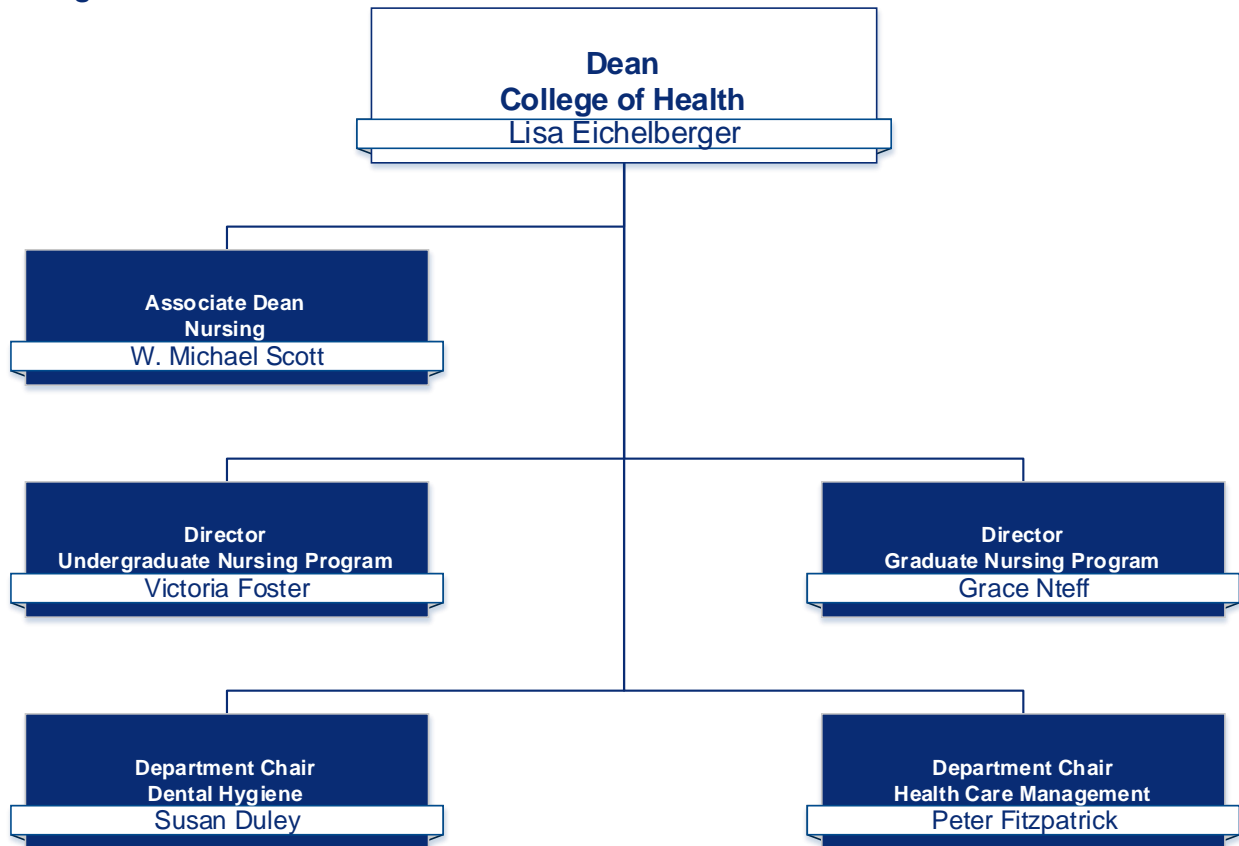
College of Arts & Sciences – Effective 7/1/2018



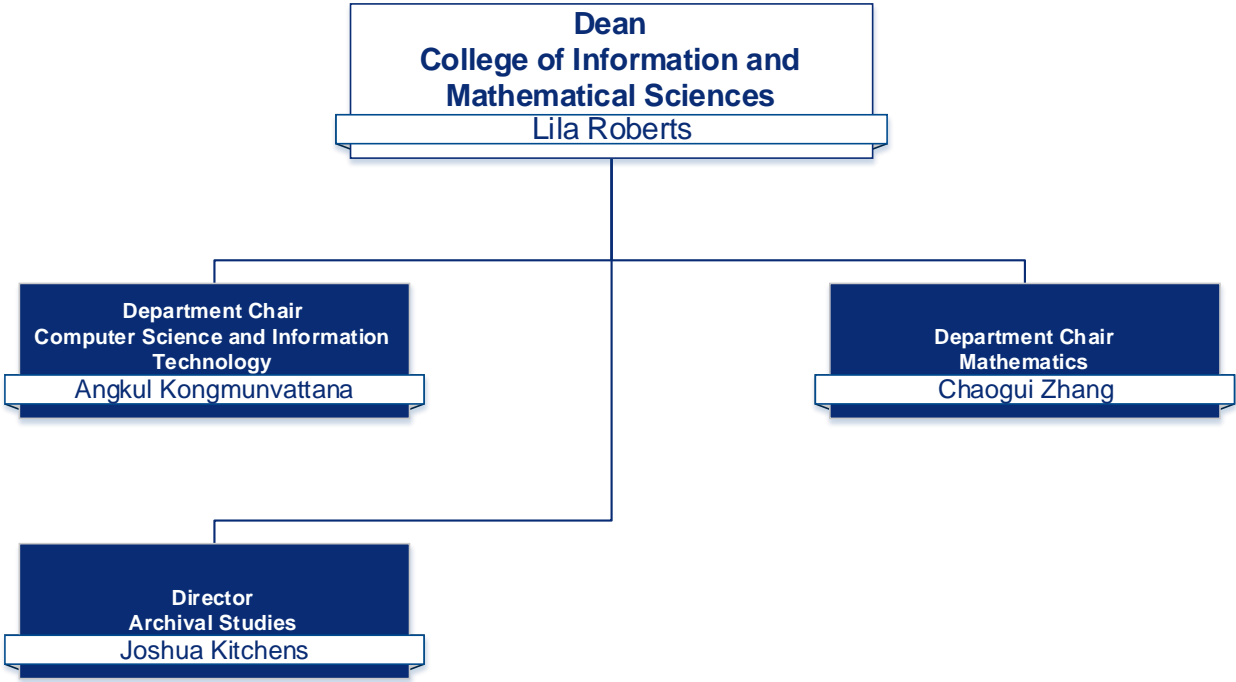
College of Business – Effective 7/1/2018



College of Health – Effective 7/1/2018



College of Information & Mathematical Sciences – Effective 7/1/2018



Accreditations and Approvals

Regional Accreditations

Commission on Colleges of the Southern Association of Colleges and Schools. Clayton State University is accredited by the Southern Association of Colleges and Schools Commission on Colleges to award associate, baccalaureate, and masters degrees. Contact the Commission on Colleges at 1866 Southern Lane, Decatur, Georgia 30033-4097 or call 404-679-4500 for questions about the accreditation of Clayton State University. Direct all other queries about programs, services, or admissions directly to Clayton State University, (678) 466-4000. For more information, visit www.clayton.edu/sacs.

National Accreditations

- Clayton State's College of Business is accredited by the Association to Advance Collegiate Schools of Business (AACSB).
- The Dental Hygiene Program is accredited by the American Dental Association Commission on Dental Accreditation (ADA).
- The Health Care Management Program holds the Association of University Programs in Health Administration Management (AUPHA) full-certified undergraduate status.
- Clayton State University is an accredited institutional member of the National Association of Schools of Music (NASM).
- The Nursing program is accredited by the Commission on Collegiate Nursing Education (CCNE).
- The Paralegal Program is approved by the American Bar Association (ABA).
- The Teacher Education program is accredited by the National Council for Accreditation of Teacher Education (NCATE).

State or Local Accreditations

- The Nursing Program is approved by the Georgia Board of Nursing.
- The University's teacher preparation program is approved by the Georgia Professional Standards Commission.

Financial Aid Programs

The University has been approved for the following state and federal programs:

Veterans Administration Benefits	HOPE Scholarship & Grant Program
Federal Work Study Program	Zell Miller Scholarship
Federal Student Loans	Accel Program
Federal Pell Grants	Georgia's HERO Scholarship Program
Federal Supplemental Educational Opportunity Grants (SEOG)	Public Safety Memorial Grant
	The Student Loan Access Program

Source: Clayton State University Undergraduate Academic Catalog

Degrees and Majors Authorized

Masters

Master of Archival Studies

Master of Arts in Teaching

With Majors in:

Teaching Fields in Secondary Education

Master of Arts

With Majors in:

Liberal Studies

Master of Business Administration

Master of Health Administration

Master of Science in Criminal Justice

Master of Science in Nursing

Master of Science

With Majors in:

Clinical/Counseling Psychology

Baccalaureate Majors

Bachelor of Arts

With Majors in:

Communication and Media Studies

English

Film Production

French Language and Literature (eMajor with Valdosta)

History

Liberal Studies

Middle Level Education

Performing Arts

Philosophy

Spanish Language and Literature (eMajor with Valdosta)

Bachelor of Applied Science

With Majors in:

Administrative Management

Homeland Security/Emergency Management

Technology Management

Bachelor of Business Administration

With Majors in:

Accounting

General Business

Management

Marketing

Supply Chain Management

Bachelor of Information Technology

Bachelor of Science

With Majors in:

Biology

Chemistry

Computer Science

Criminal Justice

Health Care Management

Health Fitness Management

Health Sciences

Integrative Studies

Legal Studies

Mathematics

Political Science

Psychology and Human Services

Sociology

Bachelor of Science in Dental Hygiene

Bachelor of Science in Information

Technology

Bachelor of Science in Nursing

Bachelor of Science in Nursing, RN to BSN

Associate

Associate of Arts

In:

Integrative Studies

Film Production

Associate of Science

In:

Integrative Studies

Associate of Applied Science

In:

Information Technology

Paralegal Studies

One Year Certificate

Paralegal Studies

Baccalaureate Minors

African American Studies
Art
Aviation Administration
Biology
Business
Chemistry
Communication and Media Studies
Computer Science
Corporate Communication
Criminal Justice
Dance
Education Specialties
English
Entrepreneurship & Innovation
Film
Finance
Forensic Science
French

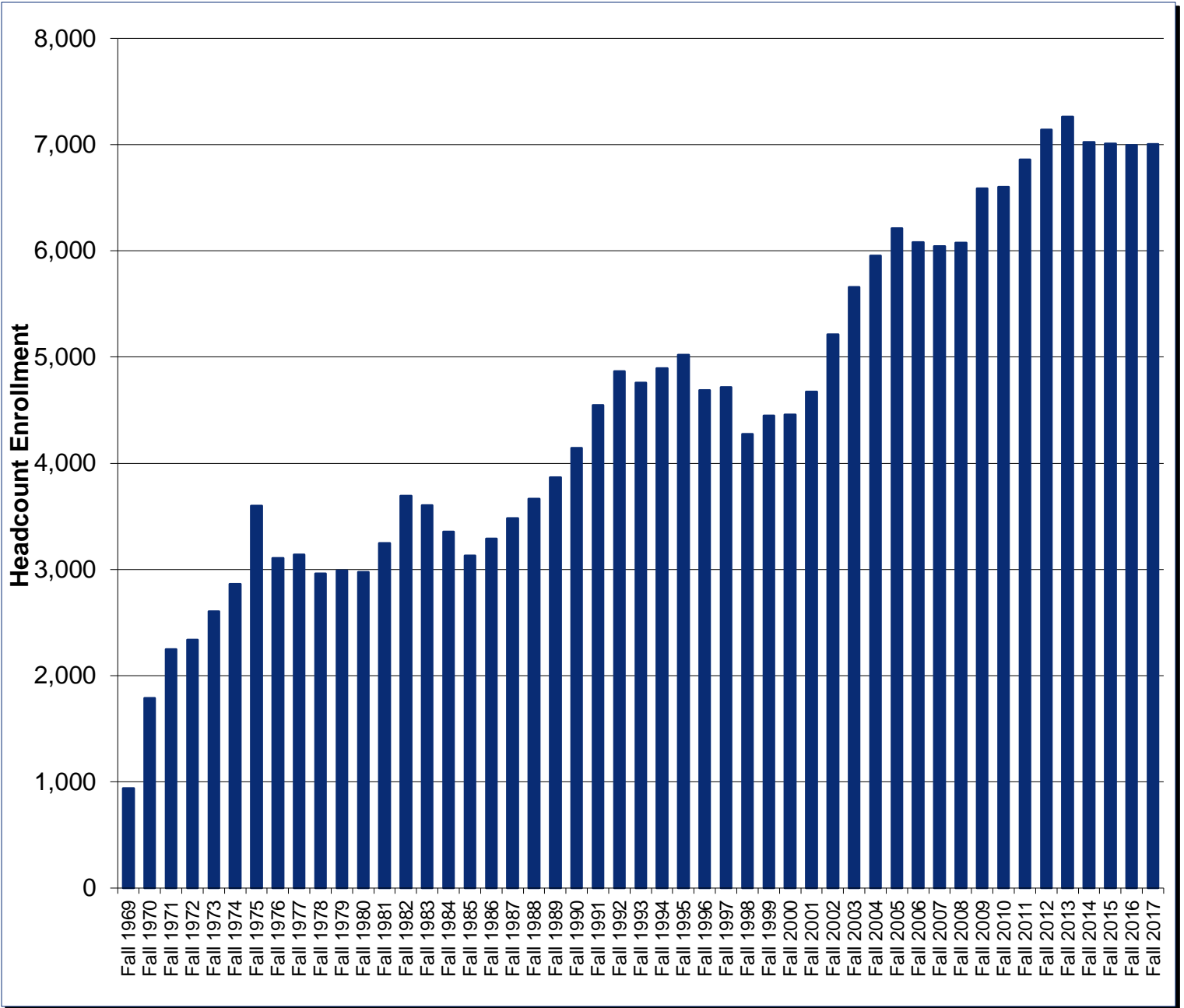
Health & Fitness Management
History
Homeland Security/Emergency Management
Information Technology
Legal Studies
Marketing
Mathematics
Music
Philosophy
Physics
Political Science
Pre-Law
Psychology
Sociology
Spanish
Supply Chain Management
Theatre
Women's Studies

Source(s): USG Degrees and Majors Authorized for Clayton State University, Clayton State University Undergraduate Academic Catalog

Fall Enrollment History and Academic Highlights

Year	Total	Annual % Change	Significant Developments of the Year
Fall 1969	942		Initial year as Clayton Junior College
Fall 1970	1,789	90%	
Fall 1971	2,250	26%	Accredited by SACS
Fall 1972	2,339	4%	
Fall 1973	2,604	11%	
Fall 1974	2,865	10%	
Fall 1975	3,598	26%	
Fall 1976	3,107	-14%	
Fall 1977	3,139	1%	
Fall 1978	2,963	-6%	
Fall 1979	2,990	1%	
Fall 1980	2,977	0%	
Fall 1981	3,248	9%	Established School of Technology
Fall 1982	3,692	14%	
Fall 1983	3,603	-2%	
Fall 1984	3,358	-7%	
Fall 1985	3,131	-7%	Granted Senior College Status
Fall 1986	3,290	5%	
Fall 1987	3,484	6%	Opened first off-campus facility in Jonesboro
Fall 1988	3,667	5%	
Fall 1989	3,869	6%	Awarded First Bachelor's Degree
Fall 1990	4,142	7%	Opened Continuing Education Center
Fall 1991	4,548	10%	Opened Spivey Hall
Fall 1992	4,866	7%	
Fall 1993	4,760	-2%	
Fall 1994	4,895	3%	
Fall 1995	5,020	3%	
Fall 1996	4,687	-7%	
Fall 1997	4,714	1%	
Fall 1998	4,274	-9%	
Fall 1999	4,449	4%	
Fall 2000	4,456	0%	
Fall 2001	4,675	5%	
Fall 2002	5,212	11%	
Fall 2003	5,661	9%	Opened Fayette County Higher Education Center
Fall 2004	5,954	5%	
Fall 2005	6,212	4%	
Fall 2006	6,081	-2%	Graduate Status Granted
Fall 2007	6,043	-1%	
Fall 2008	6,074	1%	Opened first campus housing building
Fall 2009	6,587	8%	
Fall 2010	6,604	0%	
Fall 2011	6,860	4%	
Fall 2012	7,140	4%	
Fall 2013	7,261	2%	

Fall 2014	7,022	-3%	
Fall 2015	7,012	0%	Opened the Lakeview Discover and Science Center
Fall 2016	6,996	0%	
Fall 2017	7,003	0	



Source(s): USG Semester Enrollment Reports, University Relations, Clayton State University

Year in Review

University Rankings, Accolades and Accomplishments

Rankings

Among the nation's top 142 best regional universities in the South in the 2018 Best College rankings. - *U.S. News & World Report 2018 Best Colleges*

#1 in Best Value in Georgia Higher Education for 2017. - *James Magazine*

Ranked no. 12 among the best colleges for online in Georgia. - *TheBestColleges.org*

Ranked no. 353 among Public Schools and #719 overall on the "Student Loan Debt Per Graduate Overall Rankings 2017" list. - *Student Loan Report*

Among "Top 150 Workplaces in Atlanta" for the 7th consecutive year, and the only college or university to be ranked among the Top 25 Large Companies at #21. - *2018 Atlanta Journal-Constitution Top 150 Workplaces In Atlanta*

Chosen as a top school for offering a supportive educational environment to active service members and veterans in the 2017 Military Advanced Education & Transition Guide to Colleges & Universities. - *2017 Military Advanced Education & Transition Guide to Colleges & Universities*

Earned no. 12 on the list of "50 Best Colleges for Adult Education." - *Great Value College 2017-2018 Rankings*

Ranked no. 16 overall among public colleges and universities for online programs. - *AffordableCollegesOnline.org*

Ranked no. 17 among colleges and universities in Georgia for giving students a strong chance at repaying debt, according to the second annual Student Debt Repayment Success Indicator (SDRSI) report. - *Student Loan Report*

Clayton State among top four Georgia universities for high earnings after graduation for master's degree students ranked the No. 4 School for high earnings both one year and five years after graduation for students who obtain a master's degree. Graduates earned \$55,499 one year after graduation and \$75,158 five years post-graduation. - *Governor's Office of Student Achievement*.

Accomplishments

Clayton State's economic impact on South metro Atlanta region reaches \$275 million

Clayton State University generated more than \$275.9 million in local economic impact in the surrounding region for fiscal year 2016, according to a report released by the University System of Georgia (USG).

Coca-Cola gives \$500,000 to Clayton State toward scholarships for first-gen students

The Coca-Cola Foundation generously gave Clayton State \$500,000 to support scholarships for first-generation students, as well as students' interest in STEM and Supply Chain.

AT&T gives Clayton State \$12,000 to support summer Bridge program

AT&T gifted Clayton State University with \$12,000 toward the University's Bridge program. The funds will allow 24 freshman students to participate in the summer program that offers academic coaching, support and other student services to help them integrate into college life easily.

Clayton State named a "Great College to Work For" by The Chronicle of Higher Education

Clayton State University was named one of 79 higher education institutions across the nation in *The Chronicle of Higher Education's* list of "2017 Great Colleges to Work For". The University was noted for its collaborative governance, respect and appreciation, and work/life balance.

Clayton State's Film and Digital Media Center awards students with first-ever Atlanta Metro Studios' James D. Brubaker Film Scholarship

Five deserving Fulton County High School students and graduates were named recipients of the film scholarship developed to support the next generation of Georgia film industry professionals. The scholarship covers the cost of completing the Georgia Film Academy Certification through Clayton State University's Film and Digital Media Center.

Clayton State awarded \$4,000 grant for young adult driver safety program

Clayton State University was awarded a \$4,000 grant to participate in the Governor's Office of Highway Safety (GOHS) Georgia Young Adult Program to promote driver safety. This is the eighth year the University has received the grant. This program has proven to be successful using strategies such as peer education, providing educational speakers to schools, and encouraging schools to develop creative, innovative techniques to reduce young adult crashes, injuries, and fatalities in their communities.

#Give4Dreams brings in more than \$150,000 in gifts in 24 hours

A total of \$153,939 in gifts were raised during the University's third-annual 24-hour day of giving, #Give4Dreams. From March 1 to March 2, 326 donors gave to support thirteen projects including student travel, academic research, national competitions and scholarships.

Clayton State University launches brand campaign, unveils new website design

Led by the Marketing and Communications office, Clayton State recently launched its first-ever brand campaign consisting of billboard, television, social media, and other digital advertising. The University also completed a two-year project to update its website to be more user-friendly and ADA accessible. Both projects fulfill the Strategic Plan 2022 goals of promoting and strengthening the brand, as well as supporting increased enrollment and retention.

President Tim Hynes named among "100 Most Influential Georgians"

Clayton State University's president Dr. Tim Hynes was recently named one of 2018's "100 Most Influential Georgians" by Georgia Trend Magazine. This is the fourth year Dr. Hynes has earned the recognition. The list highlights the people who are making an impact in the state or have made an impression on the magazine's staff for the year.

College of Arts and Sciences Rankings

Ranked no. 42 among the nation's colleges and universities for its Master of Science in Clinical/Counseling Psychology in the "Best Master's in Psychology Programs of 2018" list - *Best Value Schools*

Ranked no. 2 for its online bachelor's degree in English among the *2018 Most Affordable Online Colleges for English* list. -*SR Education Group*

Faculty Achievements

The Gene Hatfield Awards, given out annually by the College of Arts and Sciences to professors who demonstrate excellence in teaching and service, were awarded to three professors. Dr. Patricia Smith, professor of English, was named Teacher of the Year; Dr. Mandy Lusk, professor of Special Education was awarded Scholar of the Year; and Dr. Mari Ann Banks, assoc. professor of Multicultural Education, earned the Service Award.

College of Business Rankings

Ranked no. 8 for both high enrollment in its MBA programs and for having one of Atlanta's largest total enrollments for a business school. -*Atlanta Business Chronicle Book of Lists*

Ranked no. 4 among the 2018 Most Affordable Colleges for Bachelor's in Marketing. -*SR Education Group*

Earned the no. 16 spot among the 2017 Most Affordable Online Colleges for Business. -*SR Education Group*

Ranked no. 3 for online management degree programs on the 2018 Most Affordable Colleges for Bachelor's in Marketing list. - *SR Education Group*

Ranked no. 48 overall among U.S. colleges and universities for top 50 most affordable MBA programs. - *TopManagementDegrees.com*

Ranked no. 3 for its MBA in Human Resource Leadership program. - *HR.com's 2018 LEAD Awards*

Achievements

SHRM student chapter earns Superior Merit award

Clayton State's student chapter of the Society for Human Resource Management (SHRM) earned the 2016-17 Superior Merit award designation by the organization for providing superior growth and development opportunities to its student chapter members.

Clayton State receives \$670,000 supply chain software gift

Clayton State University received a gift of two supply chain software programs from JDA Software, a leader in global supply chain solutions for large and enterprise companies. The gift, valued at \$670,000, consist of Warehouse Management System and Supply Chain Pro software systems.

College of Business offers free tax assistance to community for 27th year

For the 27th year, Clayton State's College of Business offered free tax assistance to low- and middle-income families in February as a Volunteer Income Tax Assistance site. The program is offered through the Internal Revenue Service and helps eligible individuals prepare their taxes without the burden of tax filing costs.

Clayton State among top six Georgia universities for high earnings after graduation for business students

Ranked the No. 6 School for high earnings both one year and five years after graduation for business students, according to the Governor's Office of Student Achievement. Graduates earned \$38,205 one year after graduation and \$48,058 five years post-graduation.

Faculty Achievement

Dr. Leon Prieto, associate professor of Management in Clayton State University's College of Business, has been appointed to serve as an associate editor for the Journal of Management History (JMH). The publication is described as an interdisciplinary journal that publishes rigorous, high-quality research using diverse methodologies and theoretical approaches.

College of Health Rankings

Ranked no. 9 for its Bachelor of Science in nursing program and online RN-BSN program in for most affordable nursing degrees in Georgia. -*Zippia*

#1 dental hygiene program in the 2017 Top Online Colleges for Dental Hygiene Degrees. Evaluated among colleges and universities nationwide on a number of factors including tuition rates, to determine which schools offer the best value for students. - *SR Education Group*

Clayton State ranked #22 in the 2017 Top Online Colleges for Nurse Practitioner Degrees across the nation. Recognized for offering high academic standards and a commitment to college affordability. - *SR Education Group*

Ranked no. 30 for its online nurse practitioner degree programs. - *AffordableCollegesOnline.org*

For the 2019 Best Grad Schools list, Clayton State ranks no. 220 on the list of best nursing schools with a master's degree. *U.S. News and World Report*

Achievement

Health and fitness management program first in state to receive NSCA recognition, COAES accreditation

The University's health and fitness management program is the first in the state to obtain recognition from the National Strength and Conditioning Association, as well as accreditation in exercise science under the Committee on Accreditation for the Exercise Sciences.

College of Information and Mathematical Sciences Achievement

Clayton State University was named one of several U.S. higher education institutions to participate in Public Broadcasting Preservation Fellowship awarded to Boston public media station WGBH. The fellowship is part of the Laura Bush 21st Century Librarian Program grant by the Institute of Museum and Library Services.

Faculty Achievements

Jillian Jones, lecturer of computer science, won the 2017 Presidential Making Things Better Award.

Additional Staff Achievements

President Dr. Tim Hynes recognized faculty, staff, campus departments, and organizations that go above and beyond to make the campus and the community better at the annual Presidential Making Things Better awards. The staff winners were Donna Tafer in the Testing Center, Jeri Trenova in Human Resources. The Public Safety department also earned an award.

Athletics

Bi-Annual Breakfast of Champions Recognizes Record-Tying 75 Student-Athletes

A record-tying 75 individuals who achieved at least a 3.0 Grade Point Average were recognized as the top student-athletes at the Heritage Bank Breakfast of Champions in October.

2018 Peach Belt Conference Regular Season Division II Championship

Clayton State's men's basketball team claimed the Peach Belt regular season championship at the division II level with an 84-67 victory over Columbus State. This is the second straight time they claimed the championship win.

Spivey Hall

During winter break of 2017, Spivey Hall acquired a second Steinway & Sons D-274 concert grand piano made in Hamburg, Germany in December, which has been named "Robert." The acquisition of "Robert" marks the successful conclusion of the Spivey Hall Friends "Clara Seeks Robert" Piano Campaign, chaired by Spivey Hall Friends Council Advisor, Dr. Michael Koch.

Compiled by the Office of Marketing and Communications

Legends/Mythology

Our Swans

In early 1995, Dr. Barbara G. King, an assistant professor of Reading, donated two swans to Clayton State. She apparently had gotten these two mute swans from somewhere, and found she could not keep them on her own property. The first two swans were named Rhett and Scarlet. All was ducky until April 1997. Rhett and Scarlet nested and produced several eggs. Unfortunately, a stray dog found the nest, and Rhett was killed by the dog while defending the nest.

One egg eventually hatched. It was named, "Bonnie." However, Bonnie disappeared after a few weeks, we think the victim of a snapping turtle.

Paul Bailey of Media & Printing Services conducted a fund-raising effort of campus to buy a new swan. That effort brought Ashley, named in a campus-wide contest, to Clayton State in June 1997. He seemed to get along swimmingly with Scarlet. Sadly, though, Scarlet died in July 1997, the victim of lead poisoning from swallowing a fisherman's sinker. (This is why fishing was eventually banned from everywhere but the dam area at the far end of the lake.)

Paul jumped back in, raised more money, made more phone calls, and then brought another female swan to campus -- Melanie (the name the result of another campus-wide poll). Like the GWTW Melanie, this bird proved somewhat sickly, and died (of natural causes, we think) in January 1999. Next up was "Belle" who joined us in February 1999.

Belle and Ashley hatched four eggs on Mother's Day 2000, which was just after the lake was officially named "Swan Lake." Dr. Brad Rice of Academic Affairs and John Shiffert of University Relations were instrumental in the lake-naming effort. That happened in an impressive ceremony on March 20, 2000, presided over by Mike Vollmer.

Unfortunately, Ashley died shortly after the eggs were hatched in June 2000, also of lead poisoning from a fisherman's sinker. Three of the four cygnets died... the one survivor continues to float around Swan Lake with Belle.

In April 2002, the swans produced eggs once again and were protectively fenced from the ongoing University Center construction and foot traffic around the lake. After the mother swan's many long, hot days on the nest, the eggs failed to hatch.

Visit the University Legends webpage for updates on the continuing saga of Our Swans.

Our Mascot

It is no mystery that Clayton State is home to a diverse setting of students, but deep within the walls of this university a mystery, a secret is hiding, a secret that remains to be solved.

In 1969, Clayton Junior College was established and along with the college was a beautiful setting of trees and eight gorgeous lakes. Now, the difficulty when the college was built was that it was in mid-January and Atlanta was in the middle of one of the worst winter storms in its history. By the time construction was able to begin, several of the lakes were just beginning to lose their icy covers.

When the construction crews were digging to make room for the dam, an amazing discovery was found deep below the surface. What looked to be a large piece of rock was actually a large chunk of ice. No one thought twice about and just assumed it was ice and left it at that.

With the work picking back up and the huge ice rock lying off to the side, no one noticed that the ice began to crack. Upon returning to the dam where the ice had been left, the workers were astonished to find the ice had split in two and a hollow inside was left, as if something had hatched from within. Immediately, questions began to arise and concerns shot across the community. "What had been let

loose?"... "Should we be afraid?" After the initial shock of what may have happened had worn off, life on the construction site resumed back to normal.

Several years passed by until this story was brought up again. In 1990, a strange string of occurrences began to happen. Several of the ducks around the campus were turning up dead, looking as if some animal had feasted them on. When the campus police was filming a portion of the duck crime scene, they saw on the tape that a large, shadowy creature was walking amongst the trees and disappeared in the lake. Now, what had the police concerned was what animal could walk upright and then live underwater as well. Chaos began to stir up around the school, and several media outlets were clamoring to get a piece of this story. Rewards were offered to any student who could capture this beast on film, and anyone who could retrieve this thing alive would be granted immediate completion of a bachelor's degree.

Over the years, hundreds of photos and video footage has turned up claiming to feature this famous creature of Clayton State, who has come to be known as Loch. While no solid proof has been offered to verify that this creature actually exists, many claim to have encountered Loch. Based on their accounts they say that he is in reality friendly, and just wants to interact with students, faculty and staff. This would explain Loch's many sightings at Soccer and Basketball games and several other university functions.

So, what is this "Loch?" Is it a beast? Is it a friend? We may never find out the answers to all of our many questions, but it is worth the risk to find out. Is this the reason why this elusive creature has become the mascot of our university? Many students think it is, and maybe you should as well.

Source: [Legends, About Clayton State](#)

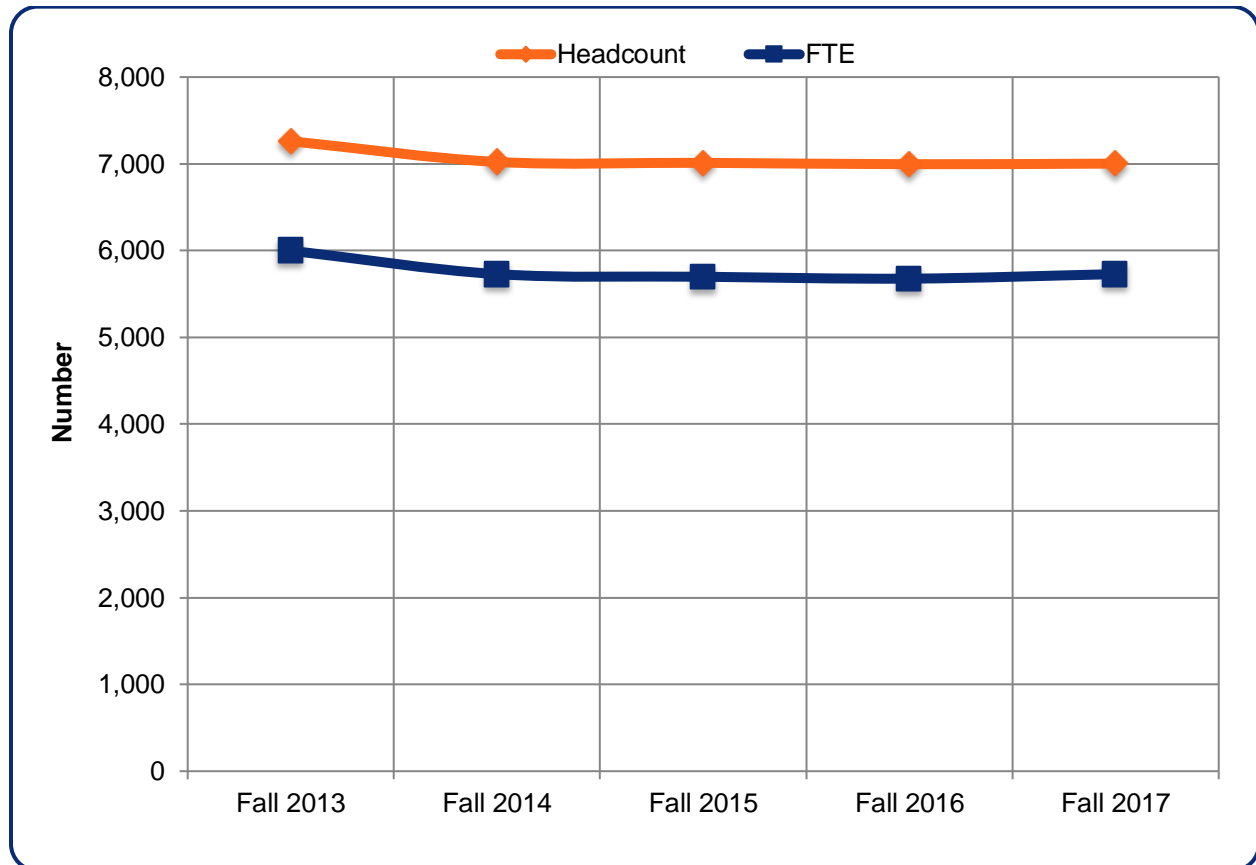
Our Students



Five Year Enrollment at Clayton State University

Fall Semesters

	Fall 2013	Fall 2014	Fall 2015	Fall 2016	Fall 2017
Headcount	7,261	7,022	7,012	6,996	7,003
FTE	5,999	5,729	5,699	5,677	5,729

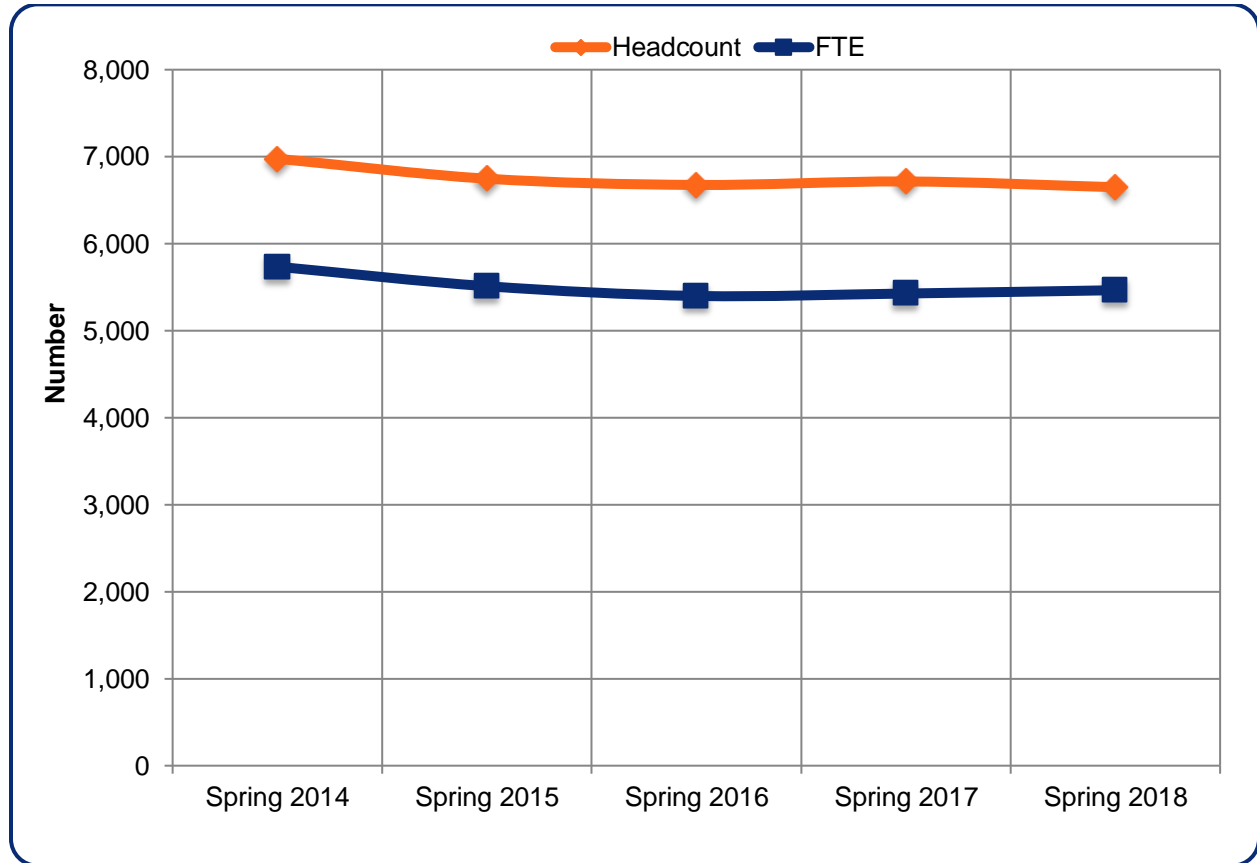


Source: USG Semester Enrollment Reports

Five Year Enrollment at Clayton State University (continued)

Spring Semesters

	Spring 2014	Spring 2015	Spring 2016	Spring 2017	Spring 2018
Headcount	6,976	6,747	6,675	6,715	6,649
FTE	5,735	5,511	5,399	5,427	5,465

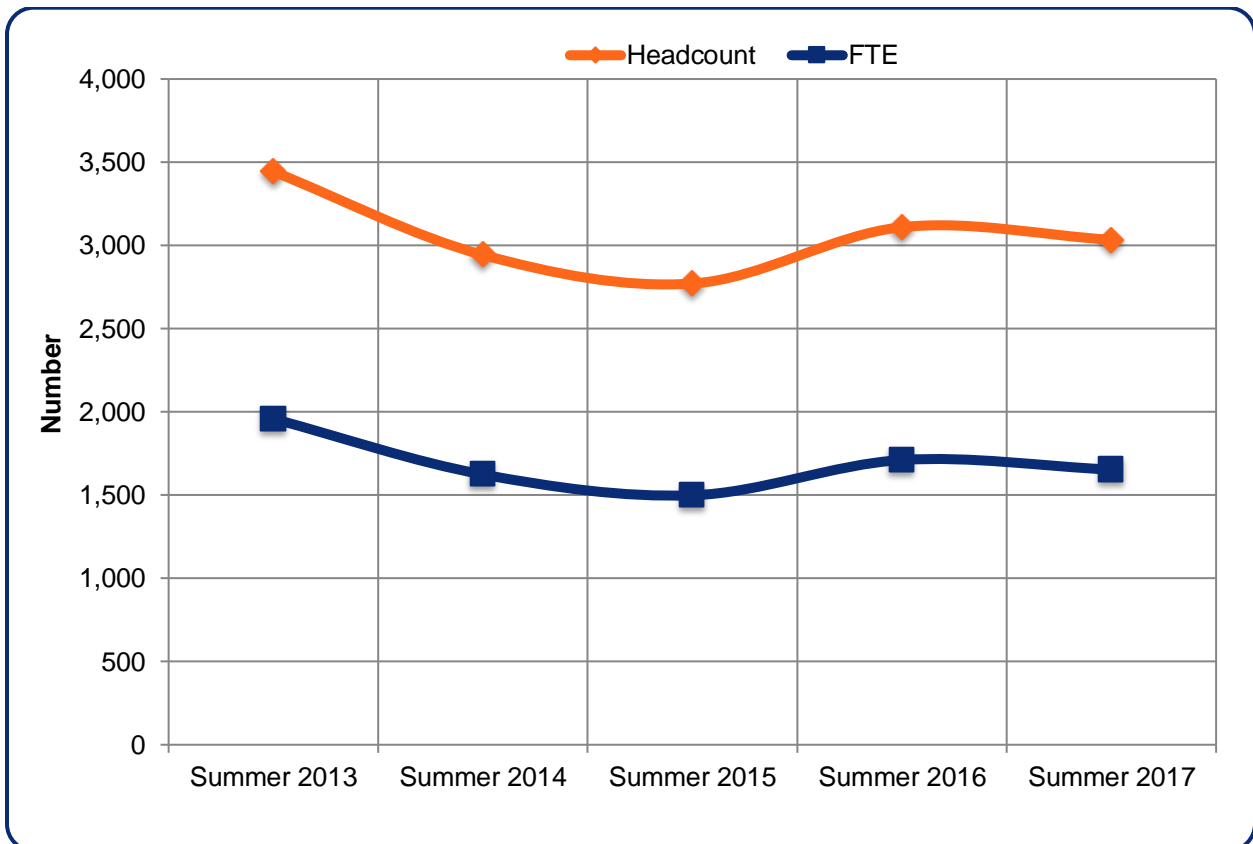


Source: USG Semester Enrollment Reports

Five Year Enrollment at Clayton State University (continued)

Summer Semesters

	Summer 2013	Summer 2014	Summer 2015	Summer 2016	Summer 2017
Headcount	3,444	2,943	2,771	3,110	3,034
FTE	1,958	1,624	1,499	1,711	1,653

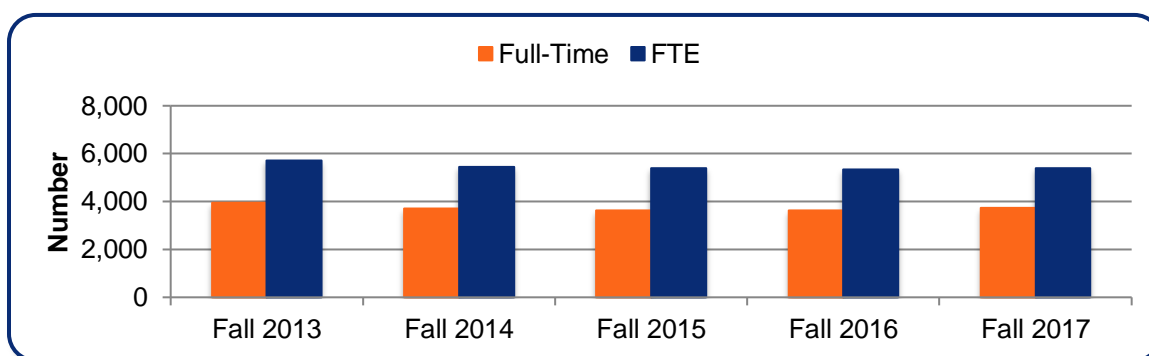


Source: USG Semester Enrollment Reports

Fall Semester Full-Time Equivalency

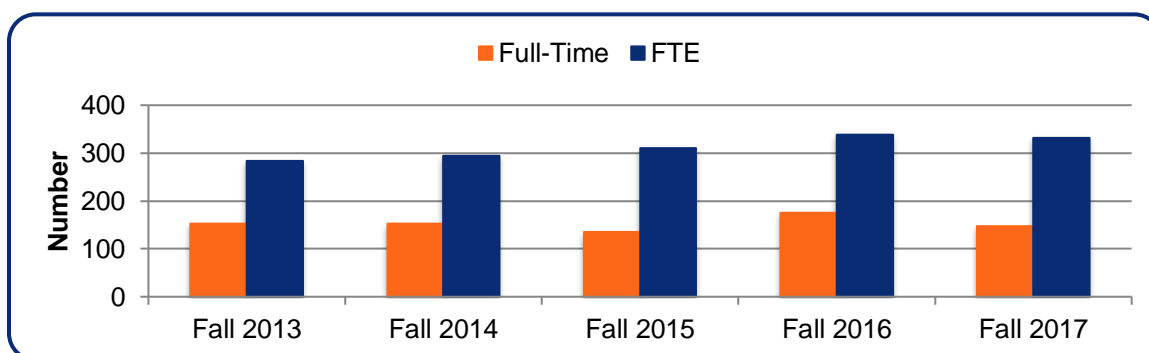
Undergraduate

	Full Time	Part Time	Total	FTE
Fall 2013	3,939	2,954	6,893	5,716
Fall 2014	3,713	2,919	6,632	5,434
Fall 2015	3,626	2,961	6,587	5,389
Fall 2016	3,636	2,919	6,555	5,339
Fall 2017	3,742	2,813	6,555	5,397



Graduate

	Full Time	Part Time	Total	FTE
Fall 2013	153	215	368	283
Fall 2014	153	237	390	294
Fall 2015	135	290	425	310
Fall 2016	175	266	441	338
Fall 2017	147	301	448	332

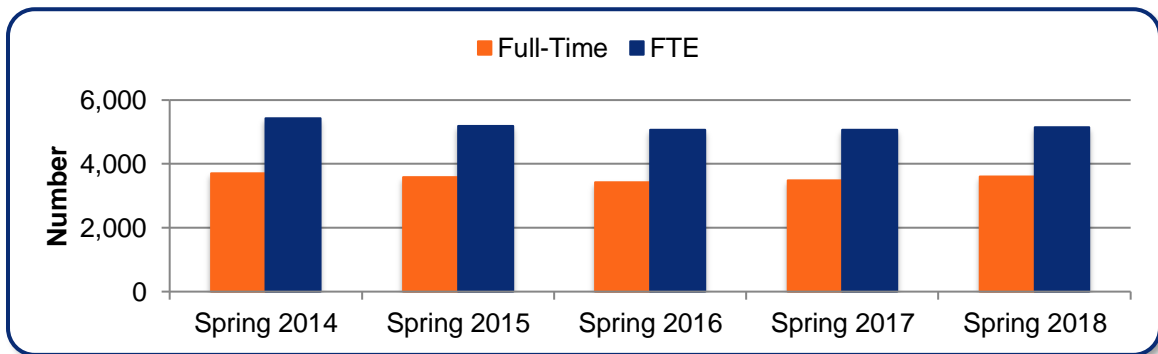


Source: Banner SIS

Spring Semester Full-Time Equivalency

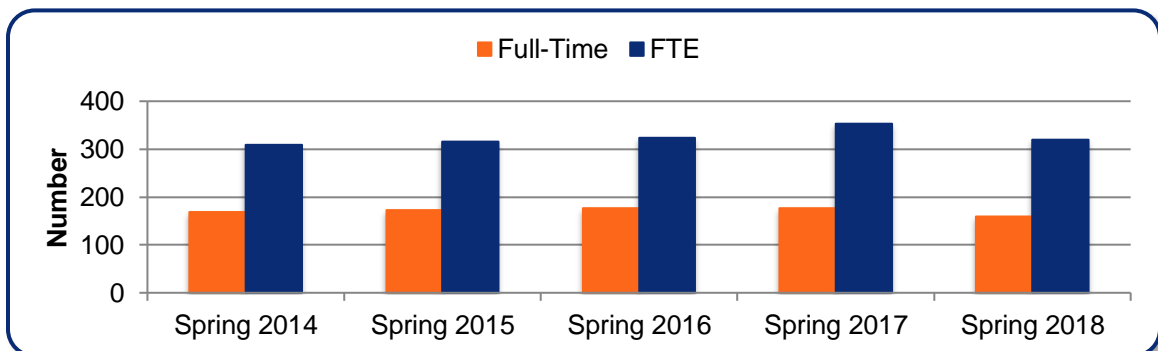
Undergraduate

	Full Time	Part Time	Total	FTE
Spring 2014	3,700	2,879	6,579	5,427
Spring 2015	3,576	2,771	6,347	5,197
Spring 2016	3,416	2,832	6,248	5,075
Spring 2017	3,487	2,764	6,251	5,074
Spring 2018	3,605	2,621	6,226	5,146



Graduate

	Full Time	Part Time	Total	FTE
Spring 2014	169	228	397	309
Spring 2015	172	228	400	315
Spring 2016	176	251	427	324
Spring 2017	176	288	464	353
Spring 2018	159	264	423	319

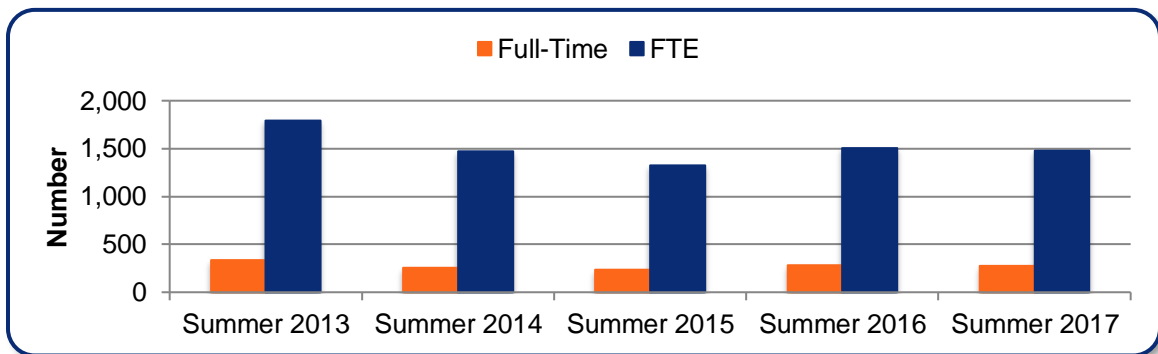


Source: Banner SIS

Summer Semester Full-Time Equivalency

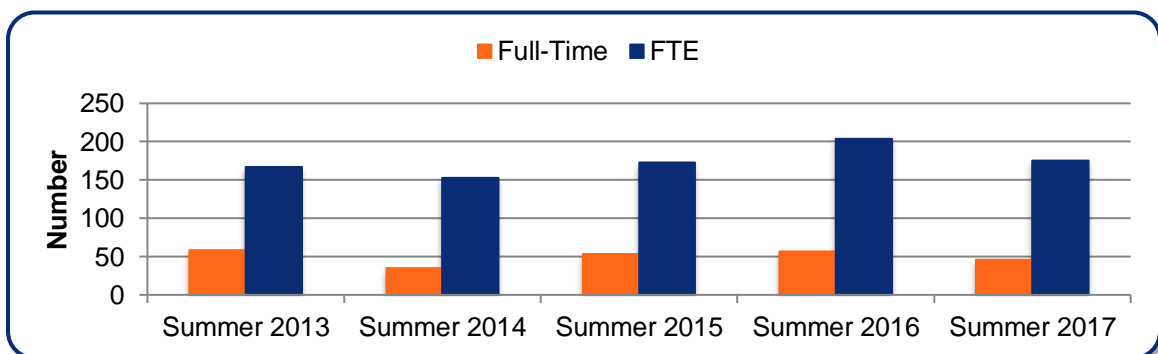
Undergraduate

	Full Time	Part Time	Total	FTE
Summer 2013	337	2,857	3,194	1,791
Summer 2014	258	2,442	2,700	1,473
Summer 2015	235	2,276	2,511	1,327
Summer 2016	284	2,525	2,809	1,508
Summer 2017	277	2,484	2,761	1,478



Graduate

	Full Time	Part Time	Total	FTE
Summer 2013	58	192	250	167
Summer 2014	35	208	243	153
Summer 2015	53	207	260	173
Summer 2016	57	244	301	204
Summer 2017	46	227	273	175

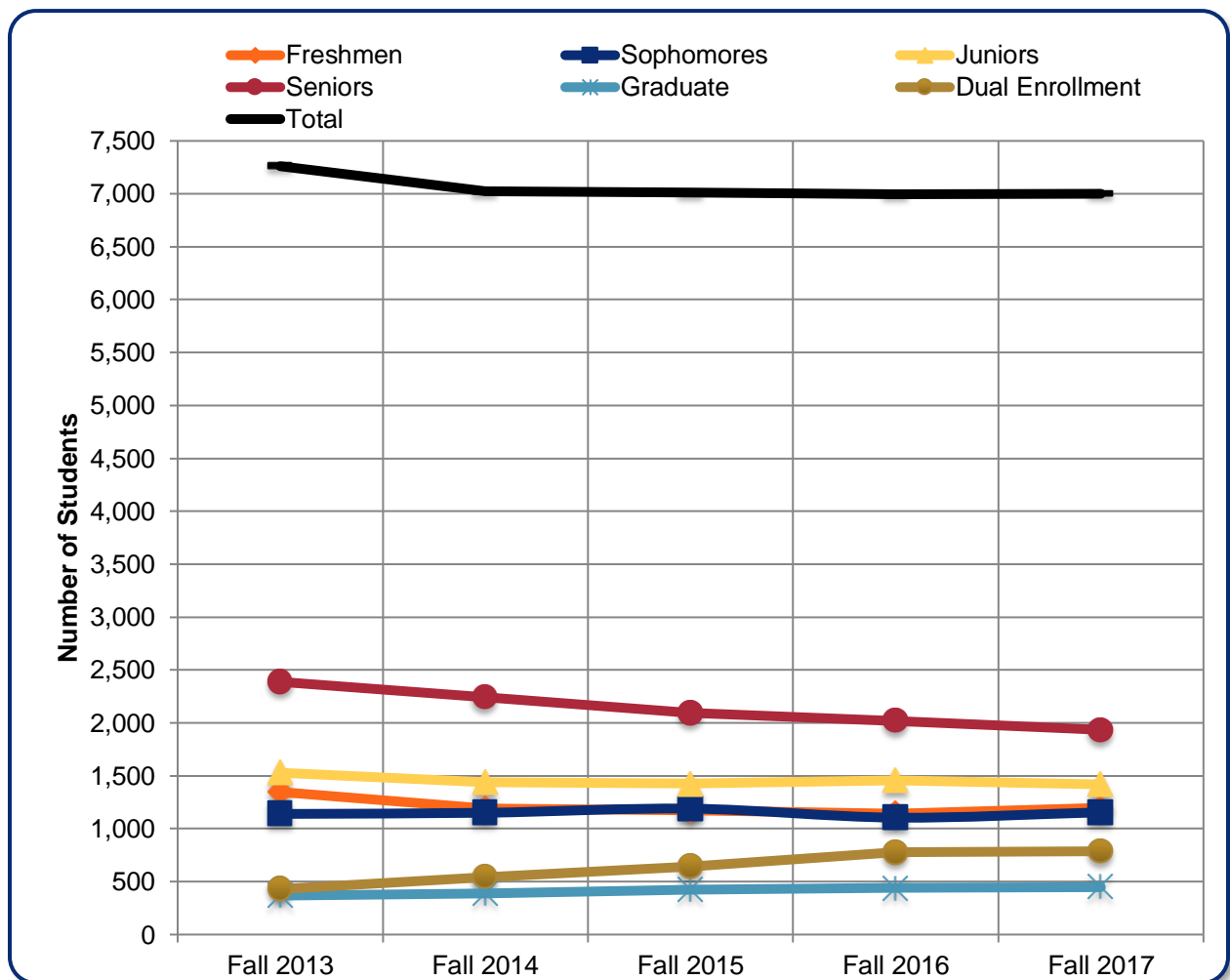


Source: Banner SIS

Enrollment by Student Status

Fall Semesters

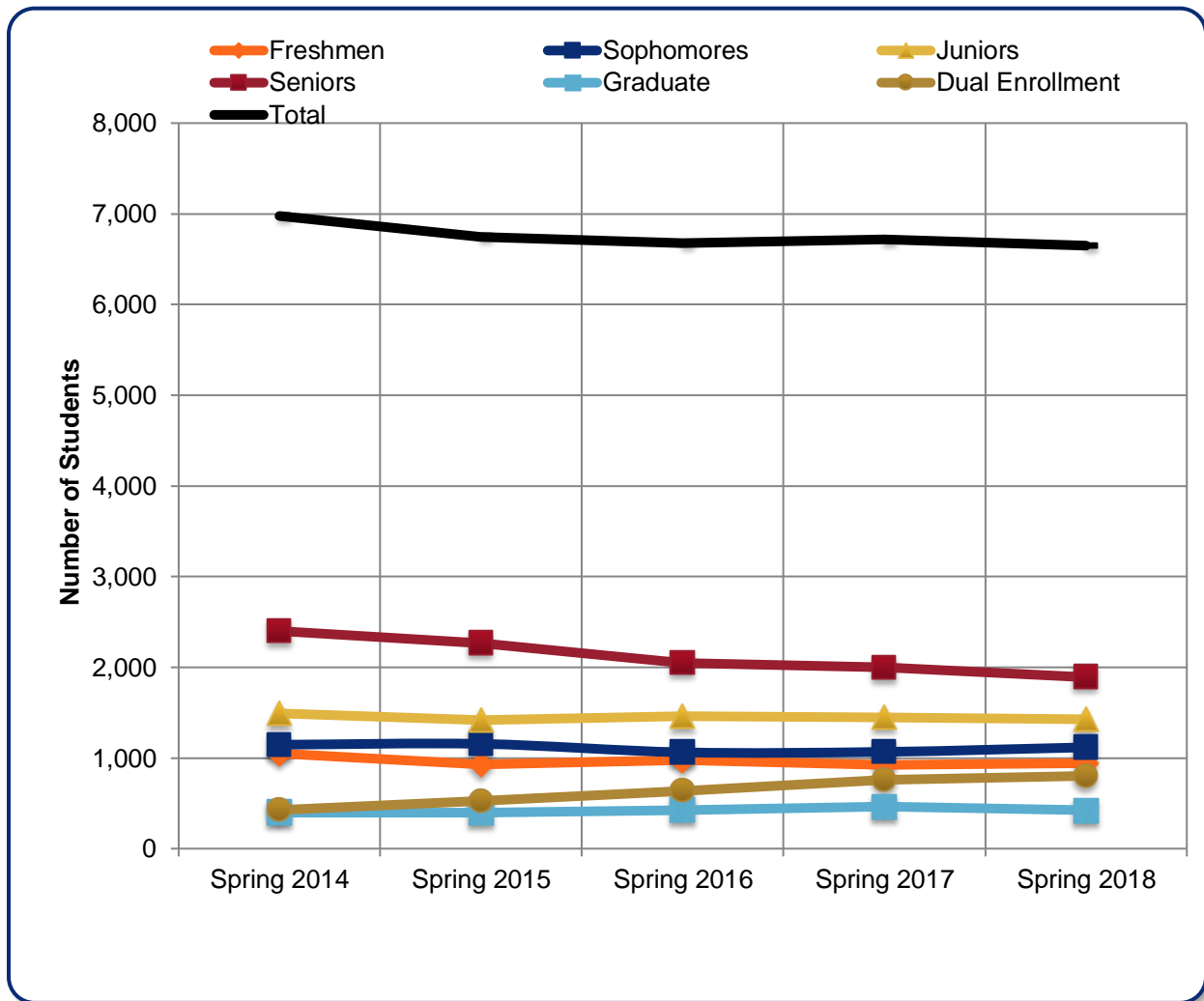
	Fall 2013	Fall 2014	Fall 2015	Fall 2016	Fall 2017
Freshmen	1,347	1,193	1,172	1,142	1,195
Sophomores	1,140	1,151	1,190	1,105	1,155
Juniors	1,529	1,439	1,425	1,458	1,419
Seniors	2,388	2,243	2,092	2,019	1,935
Graduate	368	390	425	441	448
Dual Enrollment	430	545	644	777	787
Other	59	61	64	54	64
Total	7,140	7,261	7,022	7,012	7,003



Source: USG Semester Enrollment Reports

Spring Semesters

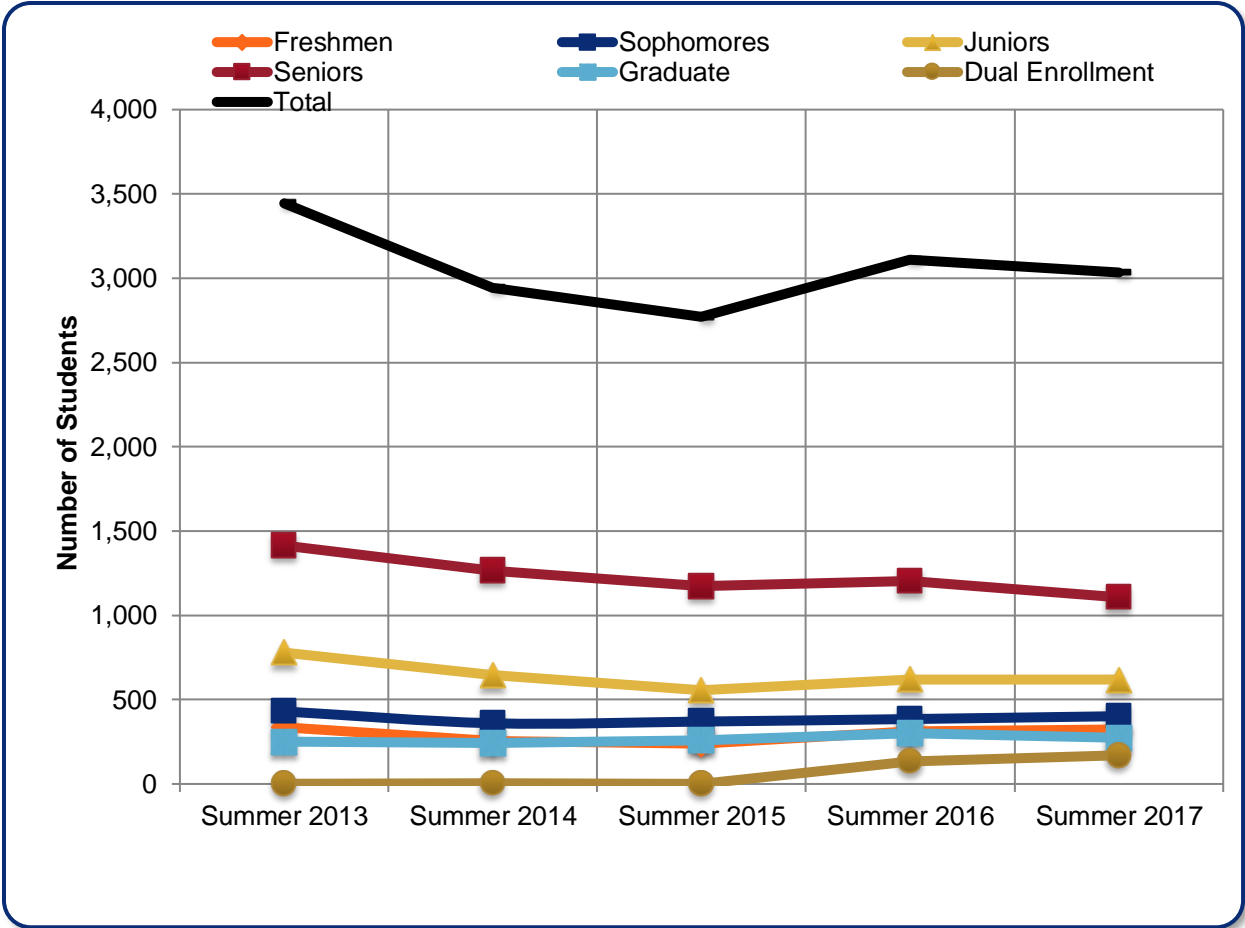
	Spring 2014	Spring 2015	Spring 2016	Spring 2017	Spring 2018
Freshmen	1,049	928	973	923	942
Sophomores	1,146	1,155	1,062	1,067	1,117
Juniors	1,491	1,417	1,457	1,448	1,427
Seniors	2,399	2,267	2,047	1,998	1,890
Graduate	397	400	427	464	423
Dual Enrollment	426	525	637	760	802
Other	68	55	72	55	48
Total	6,976	6,747	6,675	6,715	6,649



Source: USG Semester Enrollment Reports

Summer Semesters

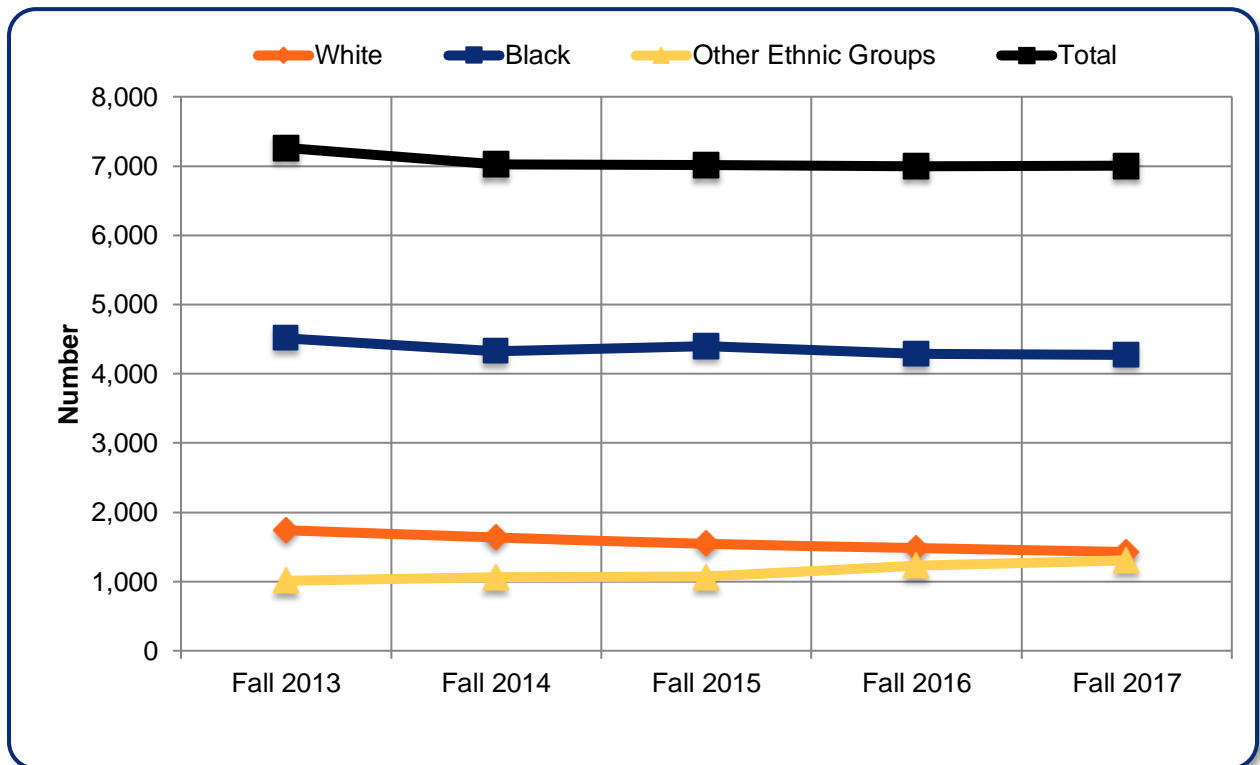
	Summer 2013	Summer 2014	Summer 2015	Summer 2016	Summer 2017
Freshmen	336	255	239	311	322
Sophomores	430	360	370	385	402
Juniors	779	645	556	621	619
Seniors	1,414	1,266	1,172	1,202	1,107
Graduate	250	243	260	301	273
Dual Enrollment	1	6	2	135	170
Other	234	168	172	155	141
Total	3,444	2,943	2,771	3,110	3,034



Source: USG Semester Enrollment Reports

Fall Enrollment by Ethnic Group

	Fall 2013	Fall 2014	Fall 2015	Fall 2016	Fall 2017
Am. Indian or Alaskan Native	11	13	16	12	14
Asian	379	397	386	450	439
Black or African American	4,511	4,327	4,398	4,283	4,272
Hispanic or Latino	83	184	247	358	431
Native Hawaiian or Other Pacific Islander	6	4	8	8	9
Two or More Races	204	197	179	195	230
White	1,740	1,636	1,544	1,483	1,426
Unknown	327	264	234	207	182
Total Enrollment	7,261	7,022	7,012	6,996	7,003
% Minority	71.5	72.9	74.6	75.8	77.0



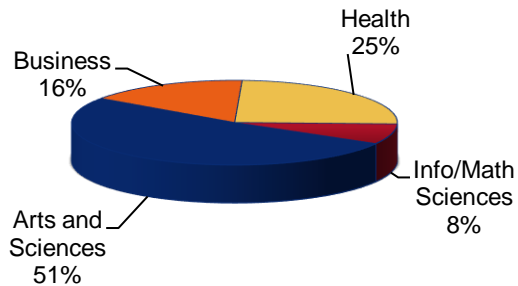
Other Ethnic Groups includes Am. Indian or Alaskan Native, Asian, Hispanic (of any race), Native Hawaiian or Other Pacific Islander, Two or More Races, and Unknown.

Source: USG Semester Enrollment Reports

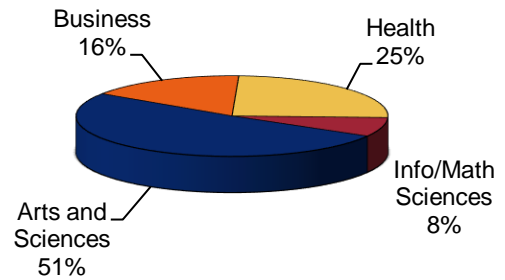
Enrollment by Gender and College

College	Male	Female	Total	Percent of Total	Percent of Male	Percent of Female
Fall 2017						
Arts and Sciences	1,119	2,477	3,596	51.3	31.1	68.9
Business	429	695	1,124	16.1	38.2	61.8
Health	224	1,513	1,737	24.8	12.9	87.1
Info/Math Sciences	389	157	546	7.8	71.2	28.8
Total	2,161	4,842	7,003	100.0	30.9	69.1
Spring 2018						
Arts and Sciences	1,051	2,339	3,390	51.0	31.0	69.0
Business	415	674	1,089	16.4	38.1	61.9
Health	195	1,464	1,659	25.0	11.8	88.2
Info/Math Sciences	361	150	511	7.7	70.6	29.4
Total	2,022	4,627	6,649	100.0	30.4	69.6

Fall 2017 Enrollment by College



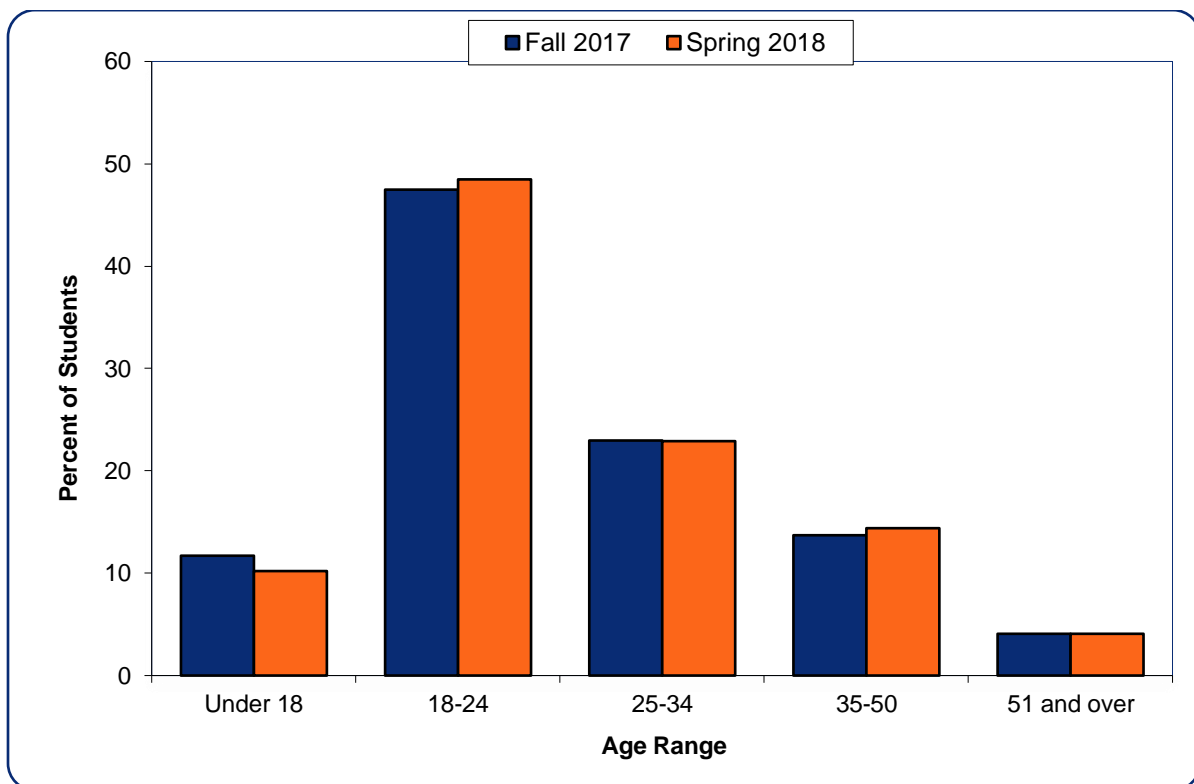
Spring 2018 Enrollment by College



Source: Banner SIS

Enrollment by Age

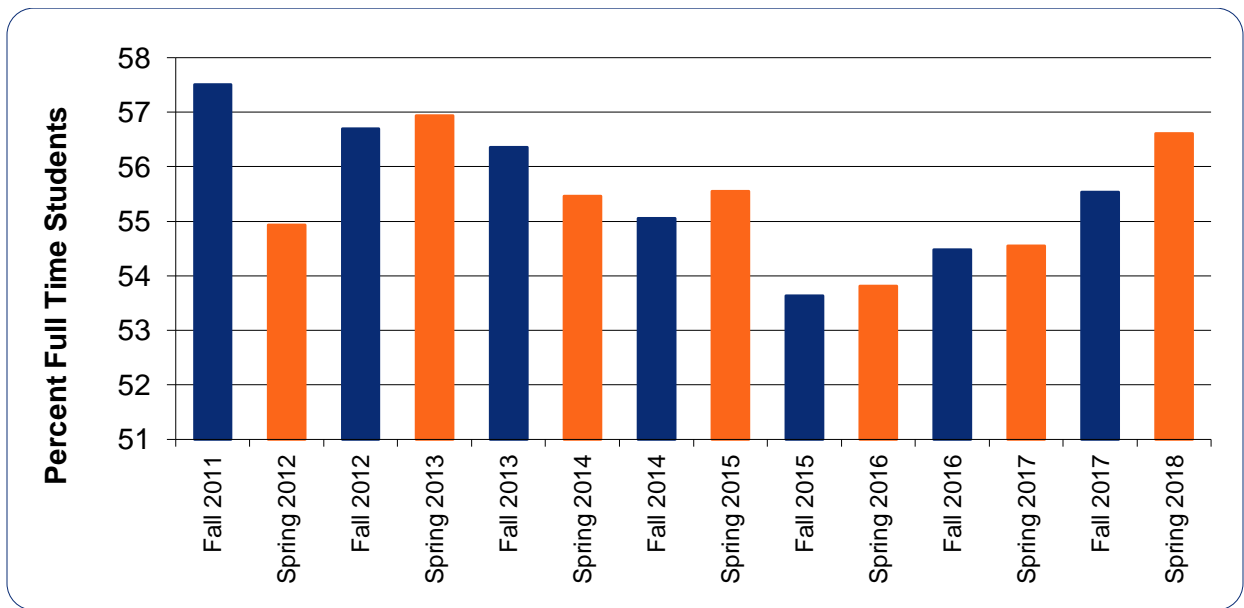
Age Range	Fall 2017		Spring 2018	
	Number of Students	Percent of Students	Number of Students	Percent of Students
Under 18	822	11.7	677	10.2
18-24	3,324	47.5	3,222	48.5
25-34	1,610	23.0	1,522	22.9
35-50	960	13.7	958	14.4
51 and over	287	4.1	270	4.1
Total	7,003	100	6,649	100
Average Age	26		27	
Oldest Age	84		78	
Youngest Age	14		15	



Source: USG Data Warehouse

Enrollment by Full-Time/Part-Time Status

Semester	Full Time	Part Time	Total	% Full Time
Fall 2011	3,945	2,915	6,860	57.5
Spring 2012	3,775	3,097	6,872	54.9
Fall 2012	4,048	3,092	7,140	56.7
Spring 2013	3,960	2,995	6,955	56.9
Fall 2013	4,092	3,169	7,261	56.4
Spring 2014	3,869	3,107	6,976	55.5
Fall 2014	3,866	3,156	7,022	55.1
Spring 2015	3,748	2,999	6,747	55.6
Fall 2015	3,761	3,251	7,012	53.6
Spring 2016	3,592	3,083	6,675	53.8
Fall 2016	3,811	3,185	6,996	54.5
Spring 2017	3,663	3,052	6,715	54.5
Fall 2017	3,889	3,114	7,003	55.5
Spring 2018	3,764	2,885	6,649	56.6



Note: Nine or more hours is considered full-time for graduate students and 12 or more for undergraduate students

Source: USG Semester Enrollment Reports

Student Course Loads

Fall 2017		
Status/Credit Hours	Number of Students	Percent of Students
Part-Time		
1-5 Credit Hours	426	6.1
6-11 Credit Hours	2,386	34.1
Graduate (1-8 Credit Hours)	301	4.3
Total	3,113	44.5
Full-Time		
12-15 Credit Hours	3,198	45.7
16+ Credit Hours	545	7.8
Graduate (9+ Credit Hours)	147	2.1
Total	3,890	55.5
Spring 2018		
Part-Time		
1-5 Credit Hours	399	6.0
6-11 Credit Hours	2,222	33.4
Graduate (1-8 Credit Hours)	264	4.0
Total	2,885	43.4
Full-Time		
12-15 Credit Hours	3,108	46.7
16+ Credit Hours	497	7.5
Graduate (9+ Credit Hours)	159	2.4
Total	3,764	56.6

Source: USG Data Warehouse

Enrollment by Student Major and College

	Fall 2013	Fall 2014	Fall 2015	Fall 2016	Fall 2017
College of Arts and Sciences					
Associates and Certificates					
Film Production			22	23	26
Int. Studies (Pre-Engineering)	67	81	100	84	92
Int. Studies (Pre-Pharmacy)	67	55	43	41	35
Integrative Studies (AA)	5	6	6	8	3
Integrative Studies (AS)	8	11	12	7	13
Paralegal Studies	30	21	18	19	16
Paralegal Studies (Cert)	56	48	29	24	27
Bachelors					
Administrative Management	205	222	227	246	230
BA Liberal Studies	113	91	100	99	93
Biology	324	315	338	348	334
Biology with Teacher Cert	8	9	10	7	8
Chemistry	55	53	58	61	52
Communication & Media Studies	77	207	193	158	152
Criminal Justice	254	221	208	184	177
English	108	80	80	70	86
English with Teacher Cert	52	29	24	22	22
Film Production			19	71	108
History	59	44	41	55	61
History with Teacher Cert	45	36	39	33	33
Homeland Security/Emergency Mgmt.			7	9	14
Integrative Studies (BS)	213	221	229	242	190
Legal Studies	109	108	110	102	88
Middle Grades Education	60	57	33	30	19
Music - General	41	47	13	4	2
Performing Arts			65	68	81
Philosophy	15	16	9	4	5
Political Science	59	56	56	64	50
Pre-Comm & Media Studies	130		1		
Pre-Middle Grades Education	69	66	73	65	61
Pre-Music	19	10		1	
Psychology & Human Services	525	457	438	451	430
Sociology	87	88	78	77	60
Spanish			1	1	6
Technology Management	75	40	44	45	51
Theatre	37	37	14	3	
Undeclared	593	692	795	913	841
Transient Student	18	24	23	24	15
Masters					
Clinical/Counseling Psychology					12
Criminal Justice		3	9	12	16
Liberal Studies (Graduate)	40	56	57	54	63
Masters of Arts in Teaching			26	20	15
Psychology (Graduate)	33	28	27	20	7
Teacher Leadership		1	3	2	
Teaching English	12	9			
Total	3,668	3,545	3,678	3,771	3,594

Enrollment by Student Major and College (continued)

	Fall 2013	Fall 2014	Fall 2015	Fall 2016	Fall 2017
College of Business					
Bachelors					
Accounting	86	141	153	127	188
General Business	48	50	65	92	239
Management	90	140	153	143	229
Marketing	53	57	81	92	127
Pre-Business	571	441	343	282	61
Supply Chain Management	61	73	82	70	100
Masters					
Master of Business Admin.	126	146	151	184	178
Total	1,035	1,049	1,028	990	1,122
College of Health					
Bachelors					
Nursing (Basic Licensure)	218	198	200	194	197
Nursing (RN Completion)	66	61	54	36	38
Pre-BSN (Basic Licensure)	765	643	608	554	49
Pre-BSN (RN Completion)	62	51	37	35	26
Dental Hygiene	50	53	55	55	56
Pre-Dental Hygiene	108	135	156	140	35
RDH-BSDH (RDH Completion)	10	8	2	10	7
Pre-RDH-BSDH (RDH Completion)	5	7	10	7	7
Health Care Management	455	421	385	330	263
Health & Fitness Management	150	142	150	132	97
Health Sciences			67	74	834
Masters					
Nursing (Graduate)	30	32	55	58	65
Health Administration	75	71	62	62	60
RN-MSN	2	2	4	2	2
Total	1,952	1,994	1,822	1,689	1,736
College of Information & Mathematical Sciences					
Associates and Certificates					
Computer Network Technician (Cert)	8	6			
Computer Network Technology (AAS)	15	9	3		
Information Technology (AAS)	16	17	21	11	13
Bachelors					
Computer Science	156	178	193	210	223
Information Technology (BIT)	205	198	185	177	175
Information Technology (BSIT)	35	38	38	46	43
Mathematics	49	54	39	42	39
Mathematics with Teacher Cert	27	35	17	11	14
Technology Management with CNET Concentration		28	24	22	13
Masters					
Master of Archival Studies	35	32	27	23	25
Teaching Mathematics	11	7			
Total	557	602	547	542	545
School of Graduate Studies					
Master - No Degree	4	3	4	4	5

Source: Banner SIS

Student Credit Hours

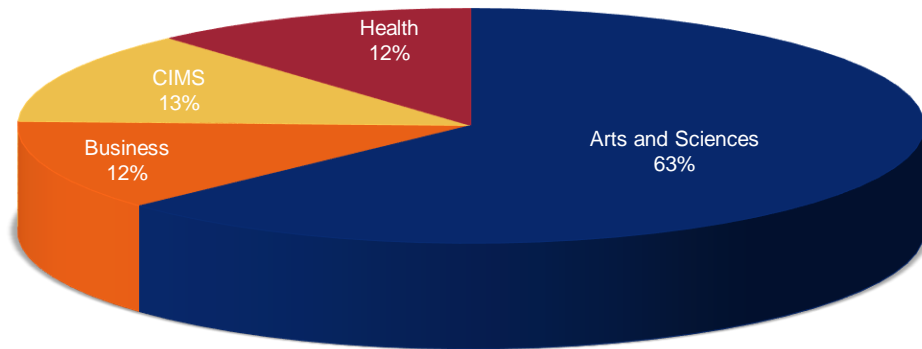
Undergraduate Credit Hours by Department

		Fall 2013	Fall 2014	Fall 2015	Fall 2016	Fall 2017
Arts and Sciences	Department					
	Biology			3,993	4,205	4,499
	Chemistry & Physics			3,440	4,000	3,884
	English	5,934	5,856	6,106	6,093	5,889
	Humanities	9,762	8,922	8,643	8,670	9,273
	Interdisciplinary Studies	1,796	1,969	2,000	2,268	2,148
	Natural Sciences	8,026	7,794			
	Psychology	6,240	5,385	5,628	5,856	5,688
	Social Sciences	7,579	6,863	7,421	7,302	7,012
	Teacher Education	1,083	982	709	771	637
	Visual and Performing Arts	5,262	5,029	4,736	5,164	5,407
Total		45,682	42,800	42,676	44,329	44,437
Business	Department					
	Law, Economics, Accounting, and Finance	3,831	3,972	4,242	4,170	4,803
	Management, Marketing and Supply Chain Management	3,538	3,838	3,718	3,762	4,038
Total		7,369	7,810	7,960	7,932	8,841
Health	Department					
	Nursing	4,555	4,365	4,245	4,354	4,141
	Dental Hygiene	599	634	667	657	664
	Health Care Management	3,723	3,345	2,877	2,535	2,360
	Health Fitness Management	1,117	991	1,194	965	1,016
Total		9,994	9,335	8,983	8,511	8,181
Information and Mathematical Sciences (CIMS)	Department					
	Information Technology	2,811	2,868	2,869	2,852	2,958
	Mathematics	5,554	5,522	6,683	5,989	6,098
Total		8,365	8,390	9,552	8,841	9,056
Other	Learning Support	1,695	1,301			
	Enrollment Management	966	830	974	468	424
	Other	75	79	83	54	86
University Total		74,146	70,545	70,228	70,135	71,025

- eCore and WebSIT credit hours are included.
- Department of Natural Sciences was divided into two departments: Biology and Chemistry & Physics (SCI credit hours are divided based on faculty department) in Fall 2015
- Learning Support was included in the related departments in Fall 2015.
- CSU 1022 (2 credit hours) was changed to CSU 1000: University Foundations (1 credit hour) in Fall 2016

Source: Banner SIS

Fall 2017 Undergraduate Student Credit Hours



Graduate Credit Hours by Department

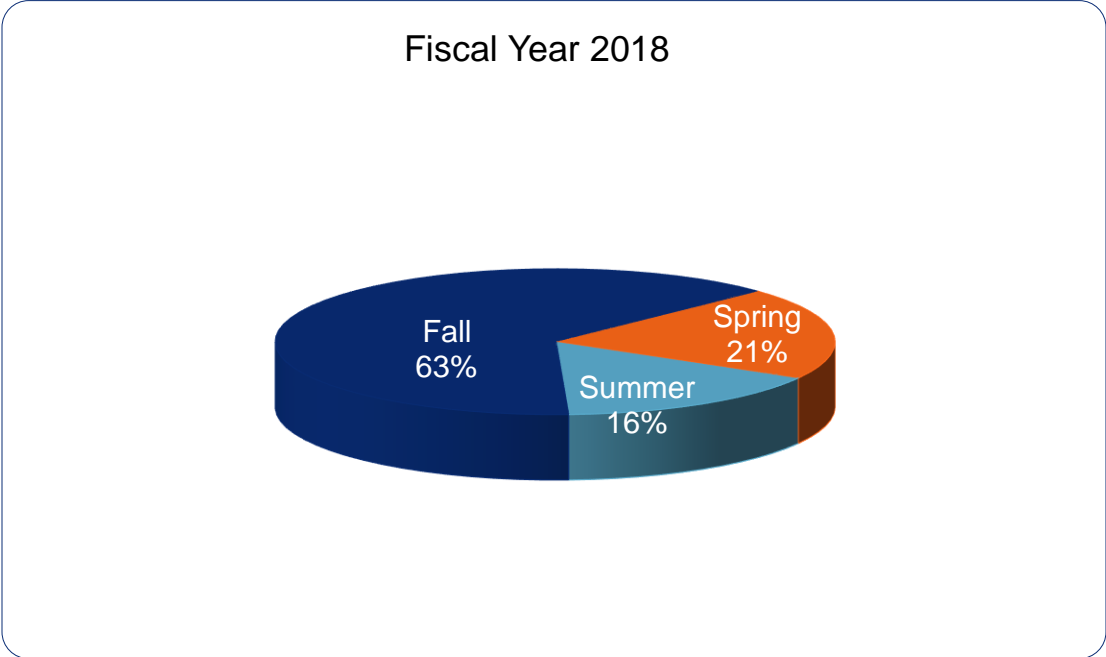
		Fall 2013	Fall 2014	Fall 2015	Fall 2016	Fall 2017
Arts and Sciences	Department					
	Biology			12	3	6
	Chemistry and Physics			12		
	English	129	84	111	93	141
	Humanities	48	78	75	81	93
	Interdisciplinary Studies	109	144	169	137	100
	Psychology	262	232	214	210	175
	Social Sciences	30	60	59	86	144
	Teacher Education	57	83	119	88	87
Total		635	681	771	698	746
Business	Department					
	Law, Economics, Accounting, and Finance	405	438	525	600	552
	Management, Marketing and Supply Chain Management	411	534	447	714	642
Total		816	972	972	1,314	1,194
Health	Department					
	Nursing	198	202	351	434	457
	Health Care Management	598	573	477	507	450
Total		796	775	828	941	907
Information and Mathematical Sciences	Department					
	Archival Studies	207	186	159	129	162
	Information Technology		9			
	Mathematics	48	21	78	48	12
Total		255	216	237	177	174
Other	Other				9	9
University Total		2,502	2,644	2,808	3,139	3,030

Source: Banner SIS

New Student Enrollment

By Semester and Term

Term	FY 2014	FY 2015	FY 2016	FY 2017	FY 2018
Summer	505	369	376	463	509
Fall	1,779	1,836	1,822	1,962	2,026
Spring	683	641	659	654	655
Total	2,967	2,846	2,857	3,079	3,190

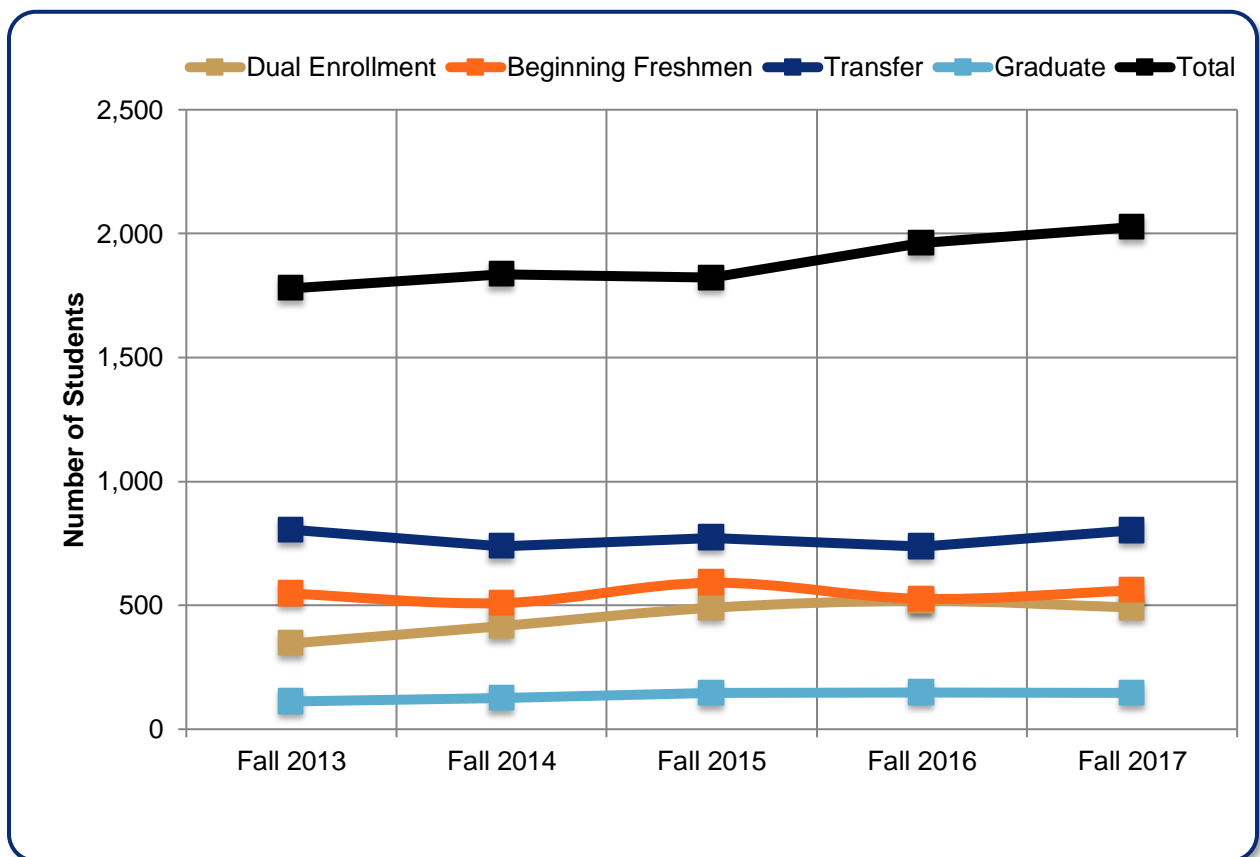


Source: USG Semester Enrollment Report

New Student Enrollment (continued)

Fall Semesters

	Fall 2013	Fall 2014	Fall 2015	Fall 2016	Fall 2017
Dual Enrollment	346	416	490	518	491
Beginning Freshmen	547	509	591	526	560
Transfer	805	739	772	737	802
Graduate	112	125	146	148	146
Other	26	33	26	33	27
Total	1,779	1,836	1,822	1,962	2,026

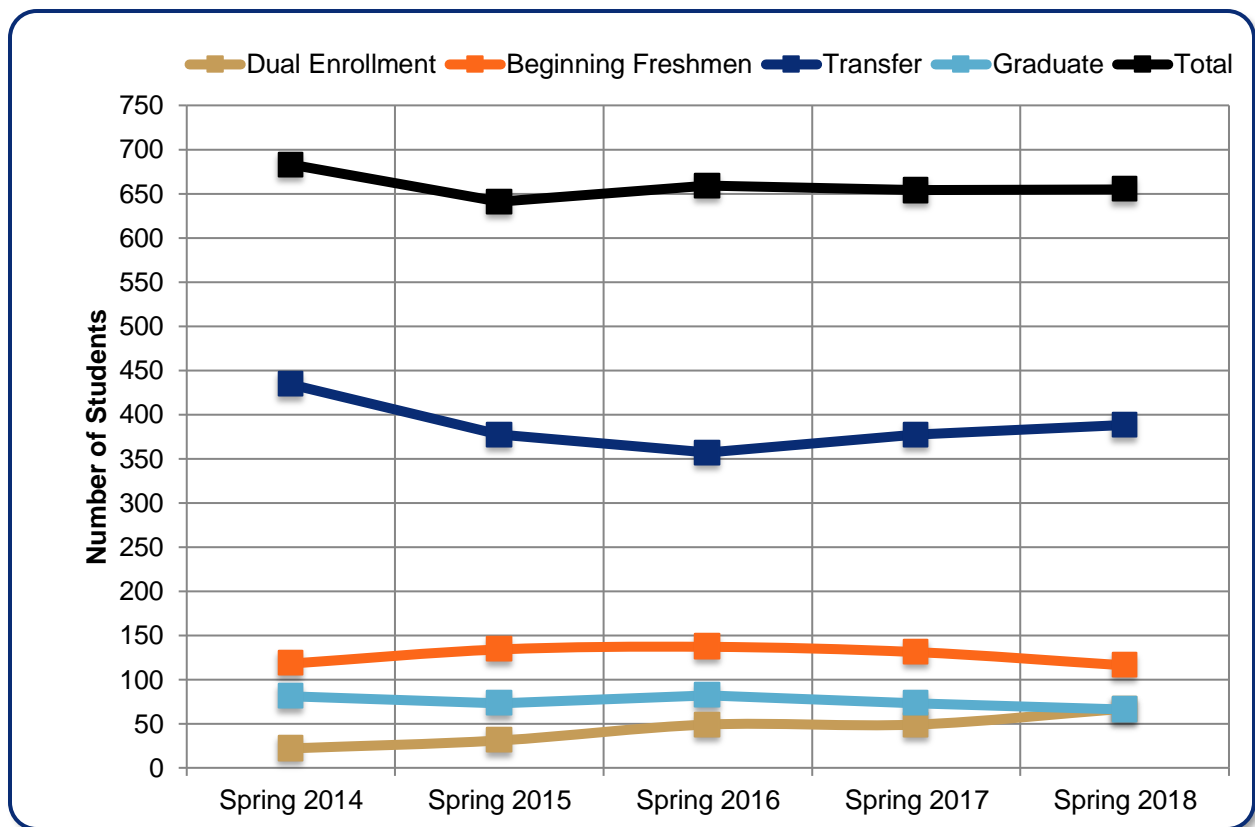


Source: USG Semester Enrollment Report

New Student Enrollment (continued)

Spring Semesters

	Spring 2014	Spring 2015	Spring 2016	Spring 2017	Spring 2018
Dual Enrollment	22	31	49	49	67
Beginning Freshmen	118	134	137	131	116
Transfer	434	377	357	377	388
Graduate	81	73	82	73	66
Other	28	26	34	24	18
Total	683	641	659	654	655

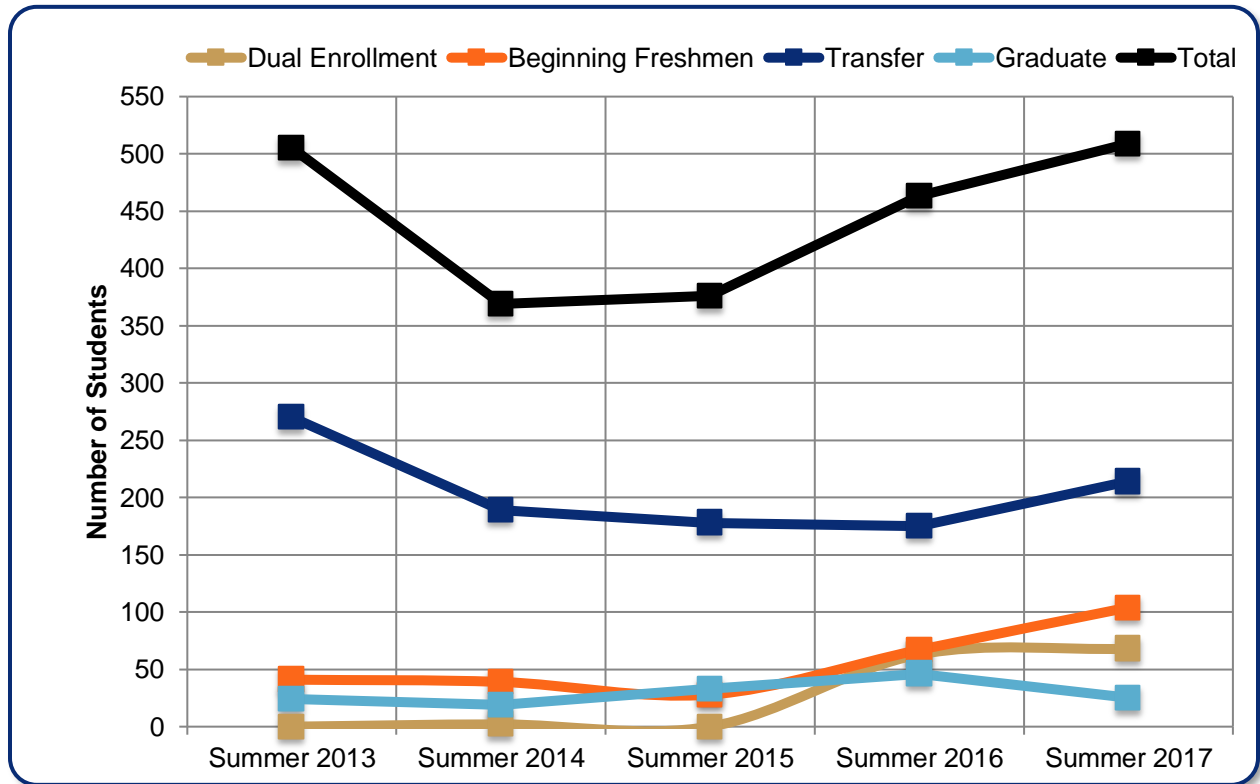


Source: USG Semester Enrollment Report

New Student Enrollment (continued)

Summer Semesters

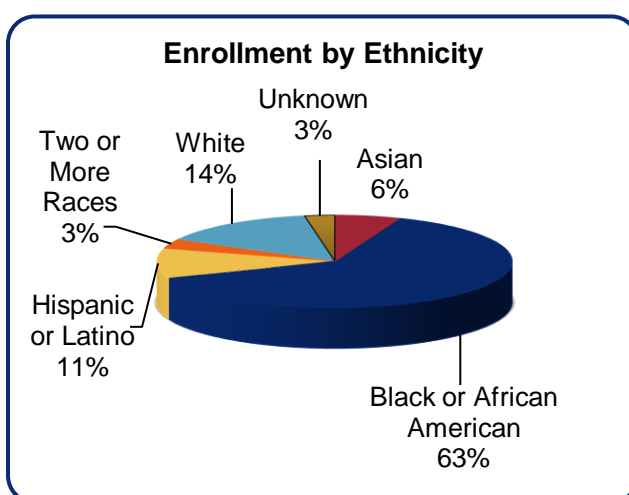
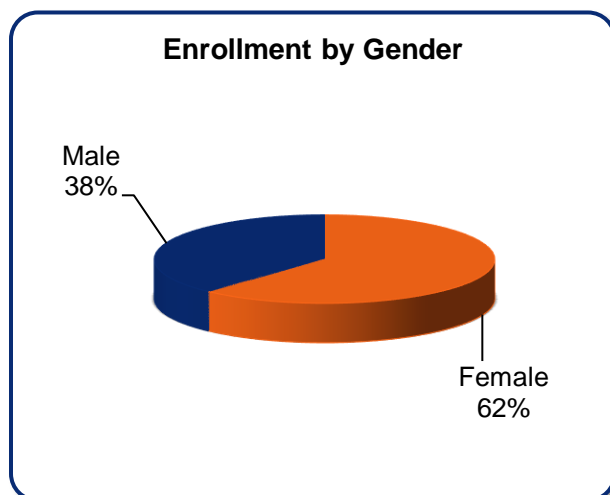
	Summer 2013	Summer 2014	Summer 2015	Summer 2016	Summer 2017
Dual Enrollment	0	2	0	63	68
Beginning Freshmen	41	39	28	67	104
Transfer	270	189	178	175	214
Graduate	24	19	33	46	25
Other	170	120	137	112	98
Total	505	369	376	463	509



Source: USG Semester Enrollment Report

First Time Full-Time Freshmen

Demographics



Top Eight Feeder High Schools

High School	Number of Students
Morrow High School	29
Forest Park Senior High School	22
Woodland High School	15
Jonesboro High School	13
Mundy's Mill High School	13
Eagles Landing High School	12
Dutchtown High School	12
International High School	12

Top Eight Majors

Major	Number of Students
Health Sciences	128
Undeclared	46
Biology	46
Computer Science	43
General Business	35
Film Production	28
Psychology & Human Services	27
Int. Studies - Pre-Engineering	19

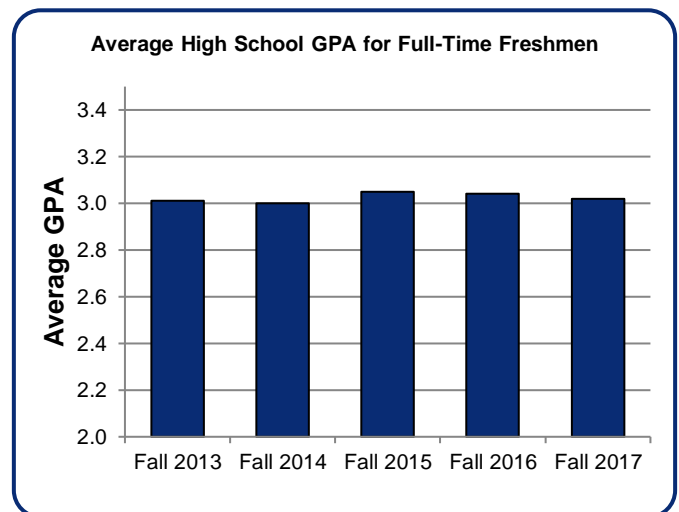
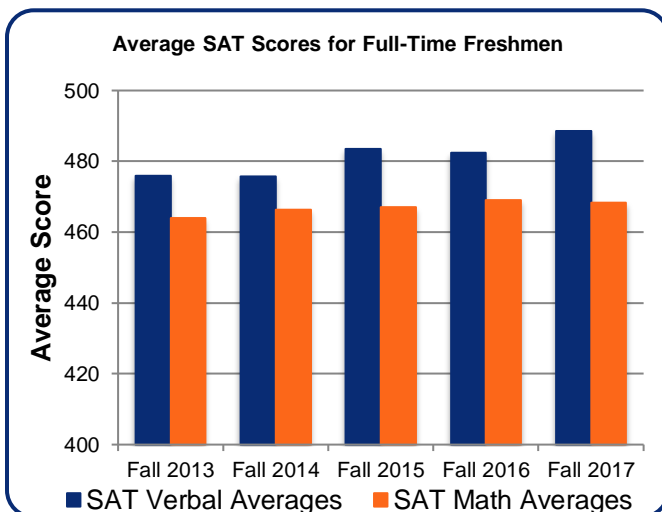
Top Ten Counties

County	Number of Students
Clayton	136
Henry	97
Fulton	51
DeKalb	49
Fayette	36
Gwinnett	15
Rockdale	11
Richmond	10
Clarke	10
Cobb	10

Source(s): USG Data Warehouse, Banner SIS

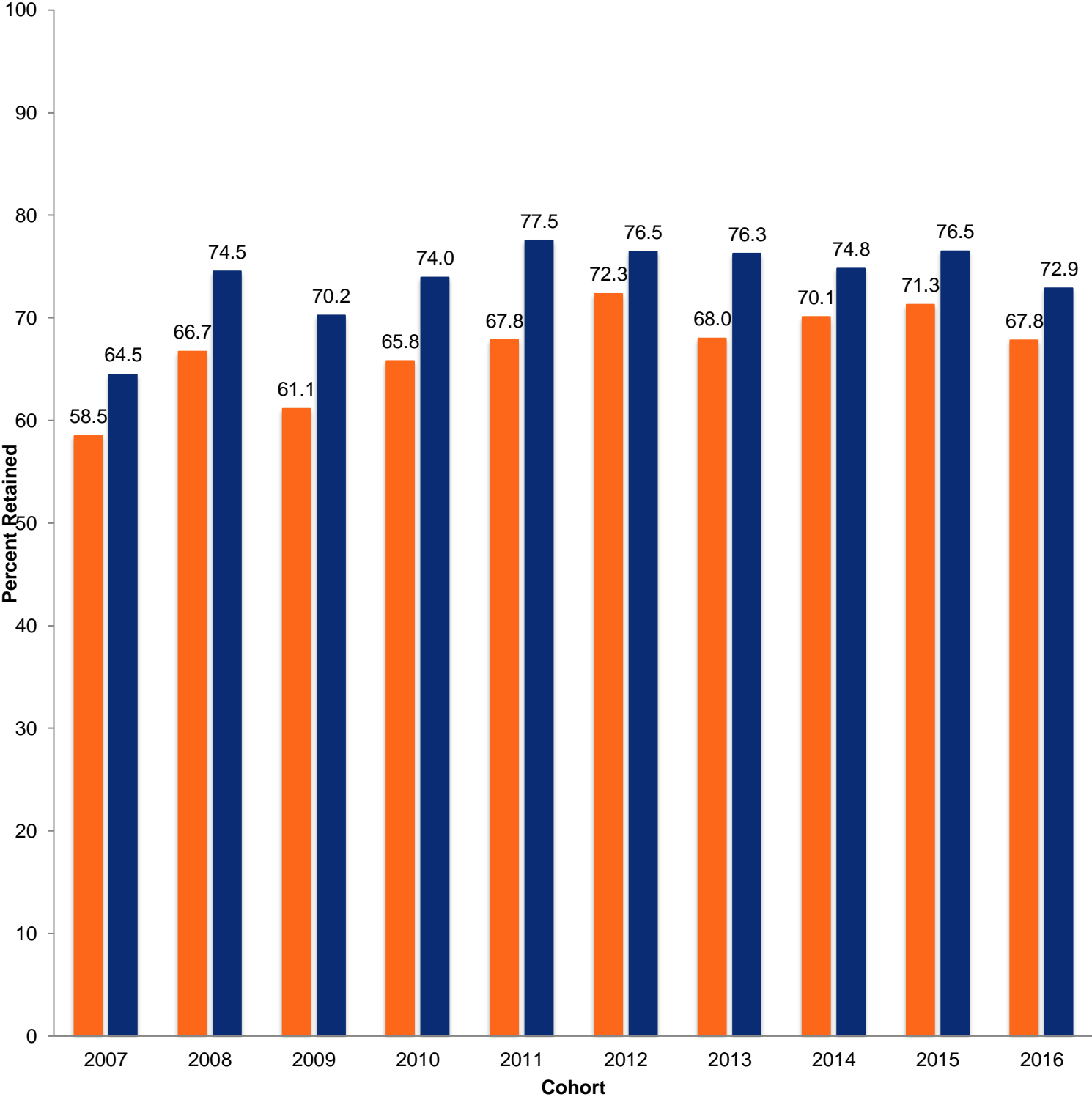
Test Scores and High School GPAs

	Fall 2013	Fall 2014	Fall 2015	Fall 2016	Fall 2017
ACT					
Number of students who took ACT	214	228	277	277	266
Composite Average	19.8	20.0	20.0	19.8	20.0
English Average	19.8	20.0	19.8	19.9	19.7
Math Average	19.3	19.4	19.4	18.9	19.4
Reading Average	20.5	20.6	20.7	20.7	20.9
Science Average	20.0	20.3	20.2	19.8	20.2
SAT					
Number of students who took SAT	334	291	326	295	364
Verbal Average	476	476	484	482	488
Math Average	464	466	467	469	468
High School GPA					
3.50-4.00	64	68	102	106	109
3.00-3.49	147	140	147	139	157
2.50-2.99	165	150	149	149	179
2.00-2.49	39	46	64	64	77
<2.00	0	0	1	0	0
Total # of reported High School GPA	415	404	463	458	522
Average	3.01	3.00	3.05	3.04	3.02



Source: USG Semester Enrollment Report

One Year Retention Rates for First Time Full Time Freshman

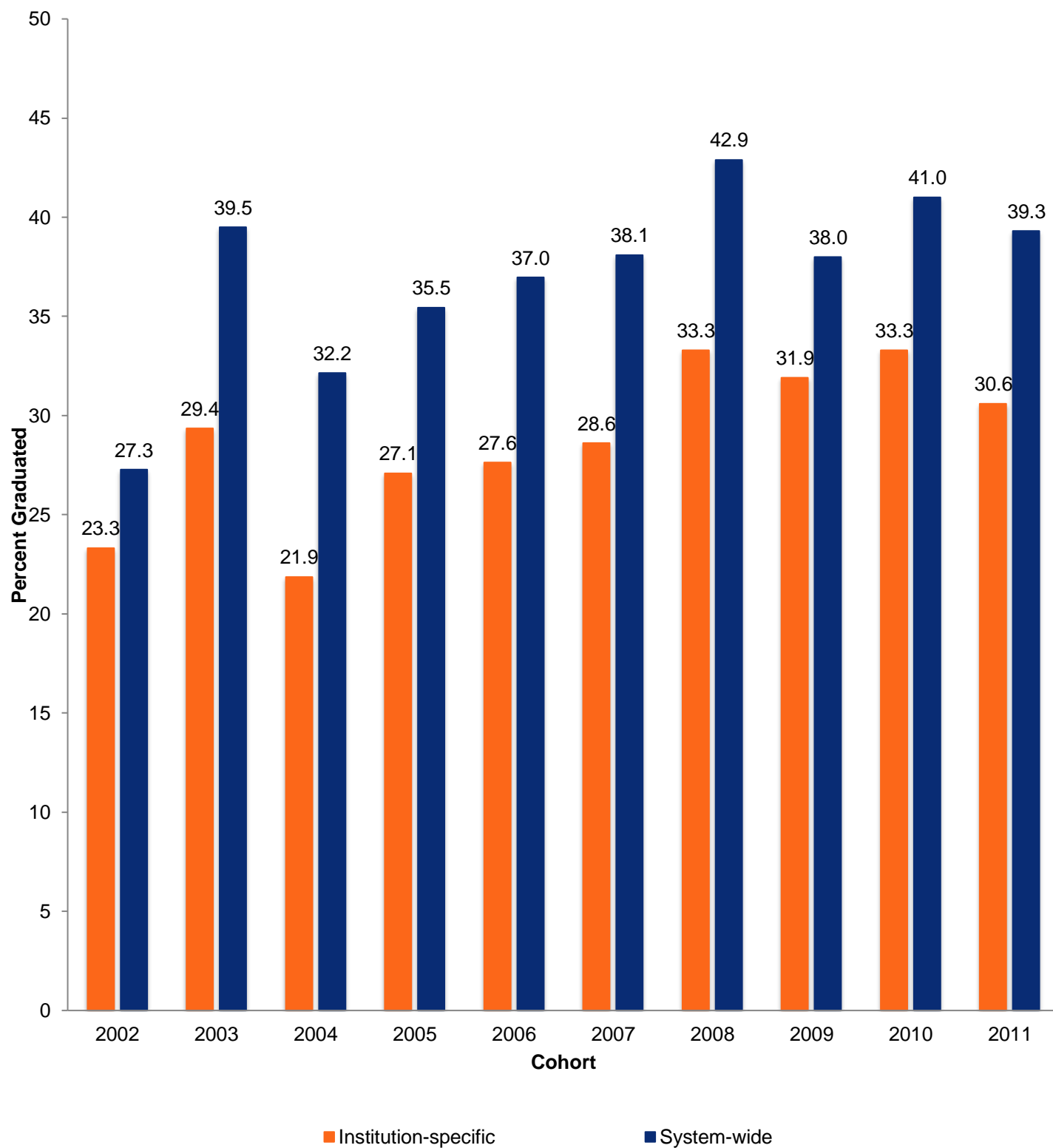


■ Institution-specific

■ System-wide

Source: USG Data Warehouse

Six Year Bachelor's Degree Graduation Rates for First Time Full Time Freshman



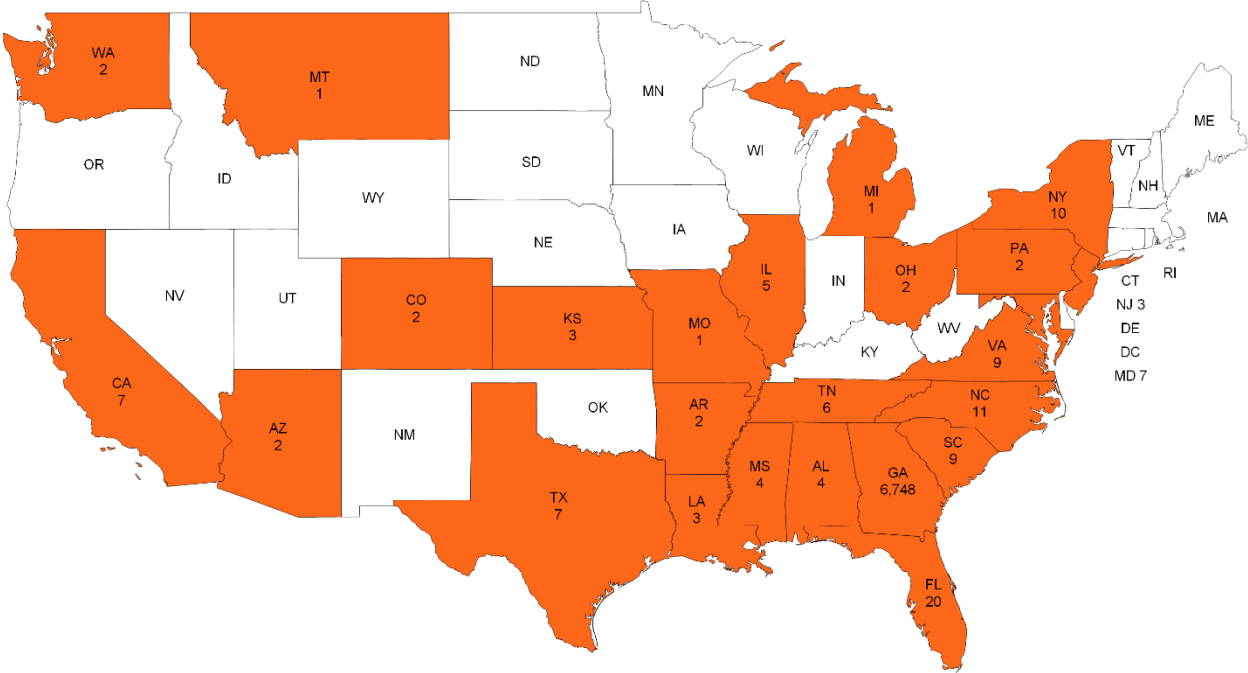
Source: USG Data Warehouse

Fall Enrollment by Georgia County

County	Fall 2013	Fall 2014	Fall 2015	Fall 2016	Fall 2017
Clayton	1,835	1,675	1,630	1,625	1,664
Henry	1,305	1,290	1,306	1,382	1,425
DeKalb	787	780	818	784	767
Fulton	836	797	783	739	734
Fayette	680	700	699	689	652
Gwinnett	193	207	190	178	180
Rockdale	116	122	128	123	131
Cobb	155	143	134	141	126
Coweta	129	148	144	121	107
Newton	125	108	110	95	106
Spalding	92	90	79	72	72
Other Georgia Counties	720	695	737	776	784
Total Georgia Students	6,973	6,755	6,758	6,725	6,748
Out-of-State/Country Students	288	267	254	271	255
Total Enrollment	7,261	7,022	7,012	6,996	7,003

Source: USG Data Warehouse, Banner SIS

Fall 2017 Enrollment by State



Source: Banner SIS

Fall 2017 Enrollment by Country of Origin

Country	Undergraduate	Graduate	Total
Australia	2		2
Azerbaijan		1	1
Bahamas (The)	1		1
Belarus	1		1
Belgium	1		1
Brazil	4		4
Comoros	1		1
Denmark	1		1
Ecuador	1		1
El Salvador	1		1
Estonia	1		1
Finland	3		3
France	1		1
Gambia (The)	1		1
Germany	1		1
Ghana	2		2
Honduras (Republic)	1		1
India	4	4	8
Ireland	1	1	2
Jamaica	1		1
Japan		1	1
Kenya	1		1
Korea, Republic of (South)	3		3
Mexico	15		15
Nicaragua	1		1
Nigeria	5	1	6
Romania		1	1
Russia Federation	1		1
Saudi Arabia	1	30	31
Sierra Leone	1		1
South Africa	2		2
Spain	4		4
Sweden	2		2
Turkey		5	5
United Kingdom/Gr Britain	9	1	10
Vietnam	6		6
Total	80	45	125
Total Countries Represented	35	9	36

Source: Banner SIS

Our Faculty



2017–18 Full-Time Instructional Faculty

Effective 10/9/2017

COLLEGE OF ARTS & SCIENCES

Dean

Nasser Momayezi, PhD, Professor, Tenured

Associate Deans

John G. Campbell, PhD, Professor, Tenured

R.B. Rosenberg, PhD, Professor, Tenured

Biology

Department Chair

Michelle A. Furlong, PhD, Professor, Tenured

Professors

Jere Ann Boudell, PhD, Tenured

Stephen C. Burnett, PhD, Tenured

Jacqueline A. Jordan, PhD, Tenured

Francine Norflus, PhD, Tenured

Associate Professors

J. Yvette Gardner, PhD, Tenured

Christopher H. Kodani, PhD, Tenured

Paul D. Melvin, PhD, Tenured

Barbara E. Musolf, PhD, Tenured

Assistant Professors

Nikki T. Sawyer, PhD

Anne M. Showalter, PhD

Senior Lecturers

Diane E. Day, PhD

Renee E. McFarlane, MS

Lecturer

Julie E. Morgan, PhD

Chemistry and Physics

Department Chair

Michelle A. Furlong, PhD, Professor, Tenured, Interim

Professors

Tatiana A. Krivosheev, PhD, Tenured

Caroline E. Sheppard, PhD, Tenured

Associate Professors

Augustine O. Agyeman, PhD, Tenured

Bram S. Boroson, PhD, Tenured

Susan F. Hornbuckle, PhD, Tenured

Jonathan T. Lyon, PhD, Tenured

Richard Singiser, PhD, Tenured

Assistant Professors

Aubrey L. Dyer, PhD

Emily A. Harbert, PhD

John J. Meyers, PhD

Lecturer

Kelli N. Bain, MS

English

Department Chair

Mary R. Lamb, PhD, Associate Professor, Tenured

Professors

Brigitte F. Byrd, PhD, Tenured
Susan E. Copeland, PhD, Tenured
Barbara A. Goodman, PhD, Tenured
Gwendolyn Harold, PhD, Tenured
Gregory V. McNamara, PhD, Tenured
Kathryn J. Pratt Russell, PhD, Tenured
Patricia A. Smith, EdD, Tenured
Robert A. Vaughan, PhD, Tenured,
Dean of Graduate Studies

Associate Professors

Cantice G. Greene, PhD, Tenured
Sipai Klein, PhD, Tenured
Eugene A. Ngezem, PhD, Tenured
Robert R. Pfeiffer, PhD, Tenured
Amy D. Sanford, PhD, Tenured

Assistant Professors

Khalilah O. Ali, PhD
Jennifer M. Parrott, PhD
Christopher J. Ritter, PhD

Senior Lecturer

Margaret W. Fletcher, PhD

Lecturers

David C. Muller, PhD
Stephanie A. Richardson, ABD

Humanities

Department Chair

Adam Tate, PhD, Professor, Tenured

Professors

Alexander Hall, PhD, Tenured,
Director of Honors Program
E. Joe Johnson, PhD, Professor, Tenured
Marko H. Maunula, PhD, Tenured
Christopher J. Ward, PhD, Tenured

Associate Professors

David Gilbert, PhD, Tenured
Randall S. Gooden, PhD, Tenured
Todd D. Janke, PhD, Tenured
Dennis R. Miller, PhD, Tenured
Carol L. White, PhD, Tenured

Assistant Professors

Jelani M. Favors, PhD
Andrew P. Kurt, PhD
Maria del Rosario Pujals Vickery, PhD

Lecturers

Benjamin L. Buckley, PhD
Aaron A. Dopf, PhD
Sanjay Lal, PhD

Interdisciplinary Studies

Department Chair:

Jason Davis, PhD, Associate Professor, Tenured

Professor

Christie H. Burton, EdD, Tenured
Sheryne M. Southard, JD, Tenured

Associate Professor

Shannon M. Cochran, PhD, Tenured

Assistant Professors

Xueyu Cheng, PhD
Bryan T. LaBrecque, MBA
Michael M. Lindsay, PHD

Lecturers

Vangela C. Humphries, MA
Elnora D. Farmer, MBA

Psychology

Department Chair:

Deborah F. Deckner-Davis, PhD, Professor, Tenured

Professors

Eric M. Bridges, PhD, Tenured
Catherine G. Deering, PhD, Tenured
Antoinette R. Miller, PhD, Tenured

Associate Professors

Mark Daddona, PhD, Tenured
Erica J. Gannon, PhD, Tenured
Brian M. Goldman, PhD, Tenured
Pinar Gurkas, PhD, Tenured
Charlie L. Harris, PhD, Tenured
Samuel J. Maddox, PhD, Tenured
J. Celeste Walley-Jean, PhD, Tenured

Assistant Professors

Pearl S. Chang, PhD
Christina M. Grange, PhD
Eckart Werther, PhD

Lecturers

Lakeisha S. Gantt, PhD
Nichelle E. Gause, MA

Social Sciences

Department Chair

Lisa D. Holland-Davis, PhD, Associate Professor, Tenured

Professors

Rodger A. Bates, PhD, Tenured
Matthew S. Cornick, JD, Tenured
Kevin P. Demmitt, PhD, Tenured,
Provost and Vice President for Academic
Affairs
Erman W. Khan, PhD, Tenured
Mara A. Mooney, JD, Tenured
Karen B. Young, PhD, Tenured

Associate Professors

Augustine E. Ayuk, PhD, Tenured
Joseph Corrado, PhD, Tenured

Assistant Professors

Andrea Allen, PhD
Elizabeth A. Bonomo, PhD
Antoinette S. France-Harris, JD
Abigail F. Kolb, PhD
Joshua R. Meddaugh, PhD

Senior Lecturer

Lawrence K. Menter, JD

Lecturers

Taralyn C. Keese, MSW
David Pena, MA

Teacher Education

Department Chair

Dennis G. Attick, PhD, Associate Professor, Tenured, Interim

Professor

Mary N. Hollowell, PhD, Tenured

Associate Professors

Erica K. Dotson, PhD, Tenured
Charles Elfer, Sr., PhD, Tenured
Winifred C. Nweke, PhD, Tenured

Assistant Professor

Mandy E. Lusk, PhD

Lecturers

Beverly Ann Garner, MEd
Rosetta L. Riddle, EdS

Visual and Performing Arts

Department Chair

Mark May, PhD, Associate Professor, Tenured, Interim

Professors

Virginia A. Bonner, PhD, Tenured
Thomas J. Hynes, Jr., PhD, Tenured,
President
Michiko Otaki, DMA, Tenured
Steven A. Spence, PhD, Tenured
Alan Caomin Xie, MFA, Tenured
Kurt-Alexander N. Zeller, DMA, Tenured

Associate Professors

Richard E. Bell, DMA, Tenured
Alan R. Clark, PhD, Tenured
Jonathan Mark Harris, MFA, Tenured
Christina T. Howell, PhD, Tenured
Kathleen M. Kelly, MFA, Tenured
Susan L. McFarlane-Alvarez, PhD, Tenured
Shontelle Thrash, MFA, Tenured
Mark J. Watson, PhD, Tenured

Assistant Professors

Brian S. Amsden, PhD
Annalisa C. Chang, PhD
Michael C. Fuchs, DMA
Shandra L. McDonald, MFA
Derrick T. Vanmeter, MFA

COLLEGE OF BUSINESS

Dean

Jacob Chacko, DBA, Professor, Tenured

Associate Dean

Louis F. Jourdan, PhD, Professor, Tenured

Assistant Dean

Judith Ogden, JD, Associate Professor, Tenured

Professors

Craig Hill, PhD, Tenured
Chen-Miao Lin, PhD, Tenured
George E. Nakos, DBA, Tenured
Cancheपुरa Narayanaswamy, PhD, Tenured
Adel M. Novin, PhD, Tenured
Alphonso Ogbuehi, DBA, Tenured
Margaret Thompson, PhD, Tenured
Anita Whiting, PhD, Tenured

Associate Professors

Khamis M. Bilbeisi, PhD
Nikki M. Finlay, PhD, Tenured
Reza Kheirandish, PhD, Tenured
Kamran S. Moghaddam, PhD
Mario Norman, PhD, Tenured
Louis Orchard, PhD, Tenured
Leon C. Prieto, PhD, Tenured

Assistant Professor

Iryna Hayduk, PhD
Carin A. Lightner-Laws, PhD
Keith E. Miller, PhD
Andrew M. Sbaraglia, PhD
Jesse Zinn, PhD

Senior Lecturers

Ronald Dulaney, MBA
John Mascaritolo, MBA

Lecturers

Dustin Micah Grant, MA
James D. Smith, MBA

COLLEGE OF HEALTH

Dean

Lisa W. Eichelberger, DSN, Professor, Tenured

School of Nursing

Professor

Sue Ellen Bingham, DSN, Tenured
Elizabeth F Mistretta, PhD

Associate Professors

Debra J. Cody, PhD, Tenured
Victoria Foster, PhD, Tenured
Misi Grace Nteff, DNP, Tenured
Susan J. Sanner, PhD
LaTonya R. Santo, EdD

Assistant Professors

Sharon Brown-Jones, DNP
Annette Crew-Gooden, MSN
Carmen V. Harrison, PhD
Demetrius Holiday, DNP
Lisa Smiley, DNP
Colleen A. Walters, DNP

Instructors

Jennie S. Bergen, MSN
Kimberly Campbell, MN
Elicia S. Collins, MSN
Han Ngoc Dong, MSN
Susan Gronka, MSN
Cathy Hammond, MSN
Angela L. Hollis, MSN
Emily Kilburg, MSN
Crystal Marchant, MS
Karen A. Massiah, MSN
Comfort N. Obi, MSN
Laura K. Phillips, MSN

Dental Hygiene

Department Chair

Susan I. Duley, EdD, Professor, Tenured

Professor

Ximena Zornosa, DMD, Tenured

Associate Professor

Wanda G. Barnes, PhD, Tenured

Assistant Professor

Joanna Harris-Worelds, MS

Health Care Management

Department Chair

Peter G. Fitzpatrick, EdD, Professor, Tenured

Professor

Thomas McIlwain, PhD, Tenured

Associate Professors

Michael E. Dalmat, PhD, Tenured
Ronald Fuqua, PhD, Tenured
M. Scott Stegall, PhD, Tenured

Assistant Professors

Marcia K. Butler, DPH
Kendolyn Smith, DPH
Meri Stegall, PhD

Senior Lecturer

Deborah M. Gritzmacher, MS

Lecturers

Joey D. Helton, PhD
Latrina Walden, MHA

Health Fitness Management

Professor

Melaine Poudevigne, PhD, Tenured

Assistant Professors

Thomas L. Andre, PhD
Hae Ryong Chung, PhD

COLLEGE OF INFORMATION AND MATHEMATICAL SCIENCES

Dean

Lila Roberts, PhD, Professor, Tenured

Information Technology

Department Chair

Angkul Kongmunvattana, PhD, Professor, Tenured

Professors

Shakil Aktar, PhD, Tenured
Junfeng Qu, PhD, Tenured
Muhammad Rahman, PhD, Tenured

Associate Professors

Byron A. Jeff, PhD, Tenured
Ken D. Nguyen, PhD, Tenured

Senior Lecturer

Larry D. Booth, MS

Lecturers

Jillian E. Jones, MS
Ade Randall Thompson, MS

Mathematics

Department Chair

Chaogui Zhang, PhD, Associate Professor, Tenured

Professors

Anthony Giovannitti, PhD, Tenured
Weihsu Hong, PhD, Tenured
Catherine A. Matos, PhD, Tenured
Kelli L. Nipper, PhD, Tenured

Associate Professors

Scott M. Bailey, PhD, Tenured
Michael Dancs, PhD, Tenured
Keith Driscoll, PhD, Tenured
Elliot Krop, PhD, Tenured
Christopher Raridan, PhD, Tenured
David B. Williams, PhD, Tenured

Assistant Professor

David B. Plaxco, PhD

Senior Lecturers

Bille May, MAT
Jelinda Spotorno, MS
Anthony Stinson, PhD

Lecturers

Jennifer Harris, MAT
Matthew Smith, MAT

Archival Studies

Assistant Professor

Joshua F. Kitchens, MAS

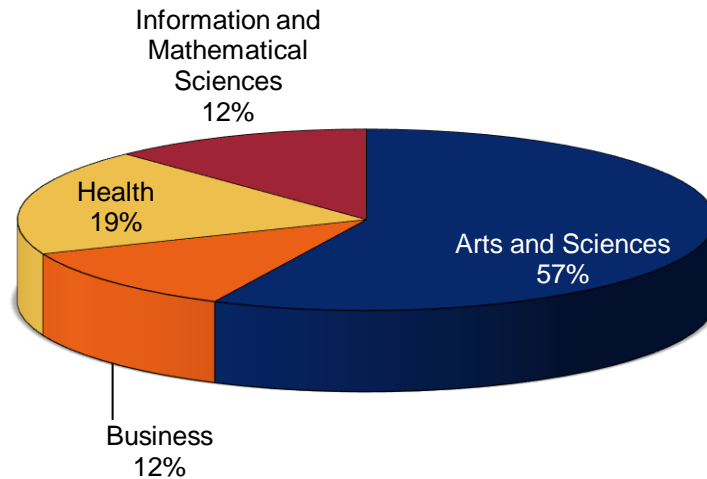
Source: Office of the Provost and Vice President for Academic Affairs, Clayton State University

Fall 2017 Full-Time Instructional Faculty

By College

College	Total Faculty	% by College	% Tenured	% Female	% Male	% Minority
Arts and Sciences	132	57.1	64.4	53.8	46.2	31.8
Business	27	11.7	59.3	25.9	74.1	33.3
Health	44	19.0	31.8	81.8	18.2	36.4
Information and Mathematical Sciences	28	12.1	64.3	25.0	75.0	42.9
Total	231	100.0	57.6	52.4	47.6	34.2

Fall 2017 Clayton State Faculty

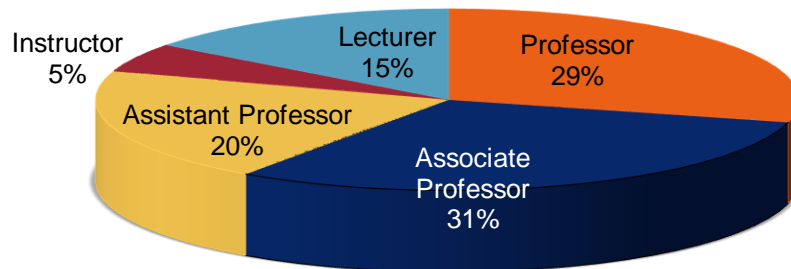


Source: Office of the Provost & Vice President for Academic Affairs, Clayton State University

By Rank

College/School	Professor		Associate Professor		Assistant Professor		Instructor		Lecturer		Total	
	#	%	#	%	#	%	#	%	#	%	#	%
Arts & Sciences	40	30.3	45	34.1	28	21.2	0	0.0	19	14.4	132	57.1
Business	10	37.0	8	29.6	5	18.5	0	0.0	4	14.8	27	11.7
Health	8	18.2	9	20.5	12	27.3	12	27.3	3	6.8	44	19.0
Information and Mathematical Sciences	9	32.1	9	32.1	2	7.1	0	0.0	8	28.6	28	12.1
Total	67	29.0	71	30.7	47	20.3	12	5.2	34	14.7	231	100.0

Fall 2017 Clayton State Faculty

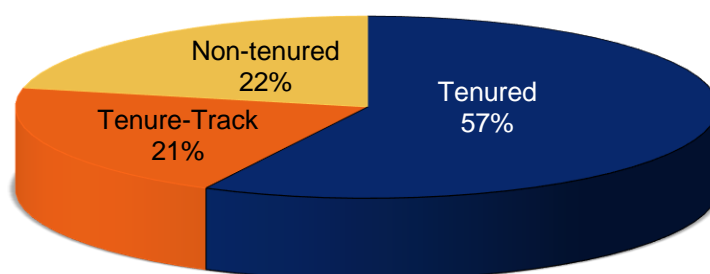


Source: Office of the Provost & Vice President for Academic Affairs, Clayton State University

By Tenure Status

College/School	Tenured		Tenure-Track		Non-tenured		Total	
	#	%	#	%	#	%	#	%
Arts and Sciences	85	64.4	28	21.2	19	14.4	132	57.1
Business	16	59.3	7	25.9	4	14.8	27	11.7
Health	14	31.8	11	25.0	19	43.2	44	19.0
Information and Mathematical Sciences	18	64.3	2	7.1	8	28.6	28	12.1
Total	133	57.6	48	20.8	50	21.6	231	100.0

Fall 2017 Clayton State Faculty

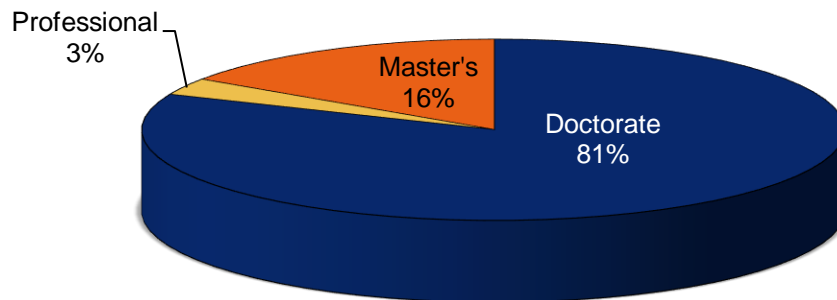


Source: Office of the Provost & Vice President for Academic Affairs, Clayton State University

By Highest Degree

College	Doctorate	Professional	Master's	Total
Arts and Sciences	116	6	10	132
Business	23		4	27
Health	29		15	44
Information and Mathematical Sciences	20	1	7	28
Total	188	7	36	231

Fall 2017 Clayton State Faculty



Source: Office of the Provost & Vice President for Academic Affairs, Clayton State University

2017-18 Graduate Faculty

School of Graduate Studies Dean

Robert A. Vaughan, Dean, School of Graduate Studies

Graduate Program Directors

Susan Copeland, Master of Arts in Liberal Studies
Mari Banks, Masters of Arts in Teaching Education
Emily Harbert, Master of Arts in Teaching Biology
Patricia A. Smith, Master of Arts in Teaching English
Charles Elfer, Master of Arts in Teaching History
Kelli L. Nipper, Master of Arts in Teaching Mathematics

Andrea Allen, Master of Science in Criminal Justice
J. Celeste Walley-Jean, Master of Science in Clinical/Counseling Psychology & Master of Science in Psychology
James Smith, Master of Business Administration
Joshua Kitchens, Master of Archival Studies
Grace Nteff, Master of Science in Nursing
Thomas McIlwain, Master of Health Administration

Graduate Faculty

Andrea Allen
Brian S. Amsden
Dennis G. Attick
Augustine E. Ayuk
Scott M. Bailey
Mari Ann Banks
Rodger A. Bates
Khamis M. Bilbeisi
Sue Ellen Bingham
Virginia A. Bonner
Jere Ann Boudell
Eric M. Bridges
Sharon Brown-Jones
Benjamin L. Buckley
Stephen C. Burnett
Christie H. Burton
Marcia K. Butler
Brigitte F. Byrd
John G. Campbell
Jacob Chacko
Pearl S. Chang
Alan R. Clark
Shannon M. Cochran
Debra J. Cody
Susan E. Copeland
Joseph Corrado
Mark Daddona
Michael E. Dalmat
Michael Dancs
Jason Davis
Deborah Deckner-Davis
Catherine G. Deering
Kevin Demmitt
Aaron A. Dopf

Erica K. Dotson
Lisa W. Eichelberger
Charles Elfer
Jelani M. Favors
Nikki M. Finlay
Peter G. Fitzpatrick
Victoria Foster
Ronald Fuqua
Michelle A. Furlong
Erica J. Gannon
Lakeisha S. Gantt
Nichelle Elise Gause
David Gilbert
Anthony Giovannitti
Brian M. Goldman
Randall S. Gooden
Barbara A. Goodman
Christina M. Grange
Cantice G. Greene
Pinar Gurkas
Alexander Hall
Emily Harbert
Gwendolyn Harold
Charlie Harris
Carmen Harrison
Craig Hill
Lisa D. Holland-Davis
Mary N. Hollowell
Demetrius Holiday
Weihsu Hong
Ronald L. Jackson
Todd D. Janke
E. Joseph Johnson
Louis F. Jourdan

Emran W. Khan
Reza Kheirandish
Joshua Kitchens
Sipai Klein
Abigail F. Kolb
Angkul
Kongmunvattana
Elliot Krop
Andrew P. Kurt
Bryan T. LaBrecque
Mary R. Lamb
Carin Lightner-Laws
Chen-Miao Lin
Mandy E. Lusk
Samuel J. Maddox
Marko H. Maunula
Thomas McIlwain
Gregory V. McNamara
Joshua R. Meddaugh
Lawrence K. Menter
Stella Michael-Makri
Antoinette R. Miller
Keith E. Miller
Elizabeth F. Mistretta
Kamran S. Moghaddam
Nasser Momayezi
George E. Nakos
C.R. Narayanaswamy
Eugene A. Ngezem
Ken D. Nguyen
Kelli Nipper
Francine Norflus
Mario Norman
Adel M. Novin

M. Grace Nteff
Winifred C. Nweke
Alphonso O. Ogbuehi
Judith Ogden
Louis Orchard
Melanie Poudevigne
Kathryn J. Pratt Russell
Leon C. Prieto
Junfeng Qu
Christopher Raridan
Lila Roberts
R.B. Rosenberg
Amy Davis Sanford
Susan J. Sanner
LaTonya R. Santo
Lisa Smiley
Patricia A. Smith
Steven A. Spence
Meri Stegall
M. Scott Stegall
Anthony Stinson
Adam Tate
Margaret Thompson
Robert Vaughan
J. Celeste Walley-Jean
Colleen Walters
Christopher J. Ward
Mark J. Watson
Eckart Werther
Carol L. White
Anita Whiting
David B. Williams
Chaogui Zhang
Jesse A. Zinn

Source: School of Graduate Studies, Clayton State University

2017-18 Instructional Faculty Committee Memberships

Faculty Senate

Tim Hynes, President
Randall Gooden, Arts and Sciences
Celeste Walley-Jean, Chair, Arts and Sciences
Eugene Ngezem, Arts and Sciences
Mark Watson, Arts and Sciences
Kathryn Pratt Russell, Arts and Sciences
John Mascaritolo, Business
Keith Miller, Business
Andrew Sbaraglia, Business
Marcia Butler, Health
Gail Barnes, Health

Meri Beth Stegall, Health
Deborah Gritzmacher, Health
Kendolyn Smith, Health
Muhammad Rahman, CIMS
David Williams, CIMS
Catherine Matos, CIMS
Scott Bailey, CIMS
Adam Kubik, Library
Laura Herndon, Library
Kevin Demmitt, Provost, Administrative Support

Undergraduate Curriculum Committee

(Subcouncil of Faculty Senate)

Andrea Allen, Arts and Sciences
Pearl Chang, Arts and Sciences
Joshua Meddaugh, Arts and Sciences
Chris Ritter, Arts and Sciences
Carol White, Arts and Sciences
Adel Novin, Business
George Nakos, Business
Joanna Harris-Worelds, Health
Emily Kilburg, Health
Deborah Gritzmacher, Health
Latrina Walden, Health
Ron Fuqua, Health

Anthony Giovannitti, Chair, CIMS
Byron Jeff, CIMS
Keith Driscoll, CIMS
Shakil Akhtar, CIMS
Joan Taylor, Library
David Greenebaum, Library
Catherine Matos, Faculty Senate Rep
David Williams, Faculty Senate Rep
Jill Lane, Associate Provost, Administrative Support
Becky Gmeiner, Registrar, Administrative Support
Eric Tack, Advising, Administrative Support

Academic Policy Committee

(Subcouncil of Faculty Senate)

Joshua Meddaugh, Arts and Sciences
Stella Michael-Makri, Arts and Sciences
John Mascaritolo, Business
Marcia Butler, Health
Joanna Harris-Worelds, Health

Shakil Akhtar, CIMS
Christopher Stotemyer, Library
Gail Barnes, Faculty Senate Representative
John Mascaritolo, Faculty Senate Representative
Jill Lane, Associate Provost, Administrative Support

Faculty Affairs Committee

(Subcommittee of the Provost's Office)

Pinar Gurkas, Arts and Sciences
Dennis Miller, Secretary, Arts and Sciences
Leon Prieto, Business
Scott Stegall, Health
Ken Nguyen, CIMS

Thomas Jackson, Library
Eugene Ngezem, Faculty Senate Representative
Mark Watson, Faculty Senate Representative
Jill Lane, Associate Provost, Administrative Support

Student Affairs Committee

(Subcommittee of the Provost's Office)

Eckart Werther, Arts and Sciences
Xueyu Cheng, Arts and Sciences
Carin Lightner-Laws, Business
Hae Rae Chung, Health
Susan Sanner, Health
Anthony Stinson, CIMS

Emily Crews, Library
Randy Gooden, Faculty Senate Representative
Kara Mullen, Faculty Senate Representative
Stephen Schultheis, Ex-Officio Member,
Administrative Support

UNIVERSITY Promotions and Tenure Committee

Karen Young, Arts and Sciences
Brigitte Byrd, Arts and Sciences
Celeste Walley-Jean, Arts and Sciences
George Nakos, Business

Sue Bingham, Health
Anthony Giovannitti, CIMS
Tammy Wilson, Manager Faculty Events,
Administrative Support

Faculty Development Committee

Subcommittee of the Provost's Office

Mari Banks, Arts and Sciences
Reza Kheirandish, Business
Sharon Jones, Health

Micheal Dancs, CIMS
Justin Mays, Chair, Director, Center for Instructional
Development, Administrative Support

Honor Program Council

Alex Hall, Director of Honors Program, Chair
Stephen Jenkins, Director of Admissions
David Gilbert, Arts and Sciences
Barbara Musolf, Arts and Sciences
Mario Norman, Business

Susan Sanner, Health
Elliot Krop, Information and Mathematical Sciences
Jeff Jacobs, Associate Dean of Students
Jay Terry, Assistant Vice President

Graduate Council

(Subcommittee of the Provost's Office)

Robert Vaughan, Chair, Dean of Graduate School
Susan Copeland, A&S, MALS Coordinator
Fran Norflus, Arts and Sciences
Jason Davis, MS Criminal Justice Coordinator
Emily Harbert, MAT Biology Coordinator
Patricia Smith, MAT English Coordinator
Charles Elfer, MAT History Coordinator
Mari Roberts, Education Coordinator
Samuel Maddox, MS Psychology Coordinator
J. Celeste Walley-Jean, MS Psychology
Coordinator
Dennis Attick, M.Ed. Teacher Leadership
Coordinator
Judith Ogden, MBA, Coordinator

Craig Hill, Business
Grace Nteff, MSN Coordinator
Ron Fuqua, Health
Thomas McIlwain, MHA Coordinator
Michael Dancs, CIMS
Kelli Nipper, MAT Mathematics Coordinator
Joshua Kitchens, Master of Archival Studies
Coordinator
Marcia Butler, Faculty Senate Rep
Meri Beth Stegall, Faculty Senate Rep
Erin Nagel, Library
Elizabeth Taylor, Assistant to the Dean of Graduate
Studies, Administrative Support

Institutional Review Board

(Subcommittee of the Provost's Office)

Charlie Harris (Nweke alternate), Arts & Sciences
Fran Norflus (Gurkas alternate), Arts & Sciences
Felisha Shepard-White, Secretary, Center for
Instructional Development
Muhammad Rahman, CIMS
William Hong, CIMS
Elicia Collins (S. Stegall alternate), Health
Carmen Harrison (Cathy Hammond), Health

Craig Hill, Business
Jesse Zinn, Business
Erin Nagel, Library
Diane Day (Showalter alternate), IACUC
Representative
Keesha White, Staff
Keith Miller, Immediate Past Chair
Jill Lane, Associate Provost, Institutional Officer

University Faculty Smith Award Committee

(Subcommittee of the Provost's Office)

Christina Grange, Arts & Sciences
Adel Novin, Business

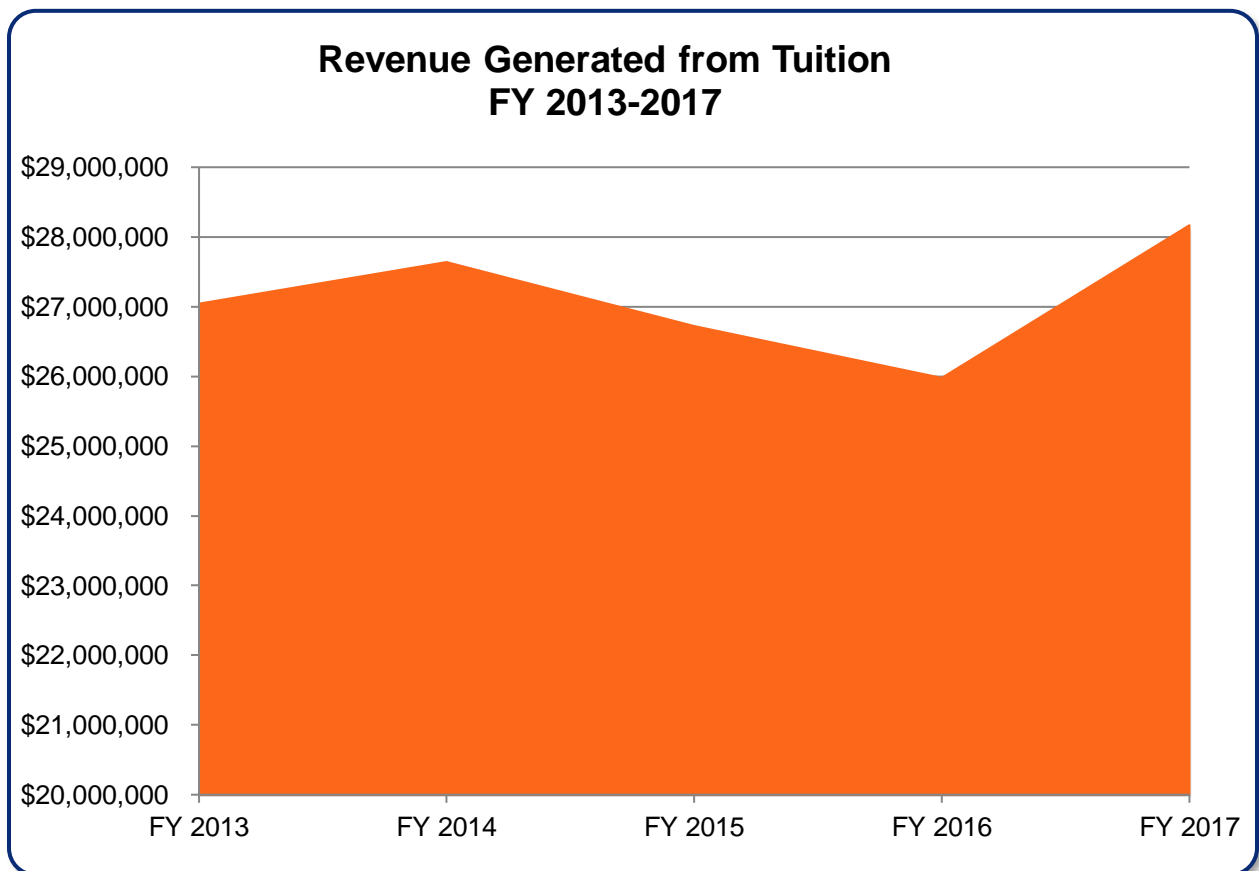
Meri Beth Stegall, Health
Anthony Stinson, CIMS

Source: Office of the Provost & Vice President for Academic Affairs, Clayton State University

Tuition Revenue

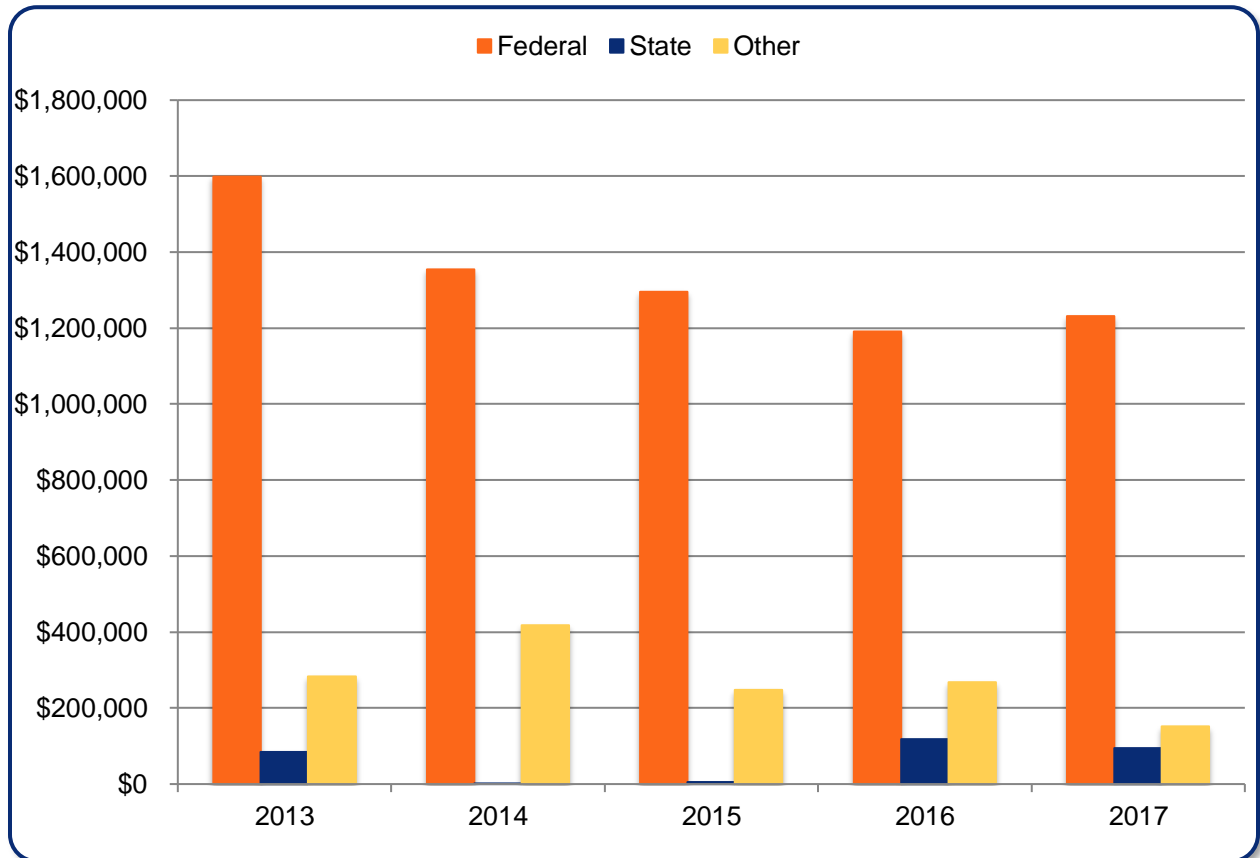
FY 2013 – 2017

Fiscal Year	Revenue
2013	\$27,046,979
2014	\$27,639,047
2015	\$26,720,928
2016	\$25,976,400
2017	\$28,169,076



Grants & Contracts by Type

	2013	2014	2015	2016	2017
Federal	\$1,598,746	\$1,355,357	\$1,296,257	\$1,191,798	\$1,231,749
State	\$83,684	\$1,500	\$5,165	\$118,180	\$94,429
Other	\$283,036	\$417,475	\$247,269	\$268,584	\$152,648
Total	\$1,965,466	\$1,774,332	\$1,548,691	\$1,578,562	\$1,478,826



Education and General Fund Expenditures by Function

Function of Expenditures	FY 2013		FY 2014		FY 2015		FY 2016		FY 2017	
	\$	%	\$	%	\$	%	\$	%	\$	%
Instruction	\$31,029,101	50%	\$32,500,144	52%	\$33,098,496	52%	\$33,368,581	50%	\$31,373,783	48%
Research	\$55,716	0%	\$47,444	0%	\$35,683	0%	\$26,084	0%	\$22,442	0%
Public Service	\$965,261	2%	\$938,279	1%	\$905,749	1%	\$988,215	1%	\$1,011,009	2%
Academic Support	\$11,593,336	19%	\$10,679,102	17%	\$10,560,758	17%	\$10,948,420	16%	\$10,271,937	16%
Student Services	\$8,640,899	14%	\$8,753,002	14%	\$9,403,402	15%	\$10,448,320	16%	\$9,643,449	15%
Institutional Support	\$10,017,301	16%	\$10,051,268	16%	\$9,337,652	15%	\$11,105,879	17%	\$13,671,589	21%
Total	\$62,301,614	100%	\$62,969,239	100%	\$63,341,740	100%	\$66,885,499	100%	\$65,994,209	100%

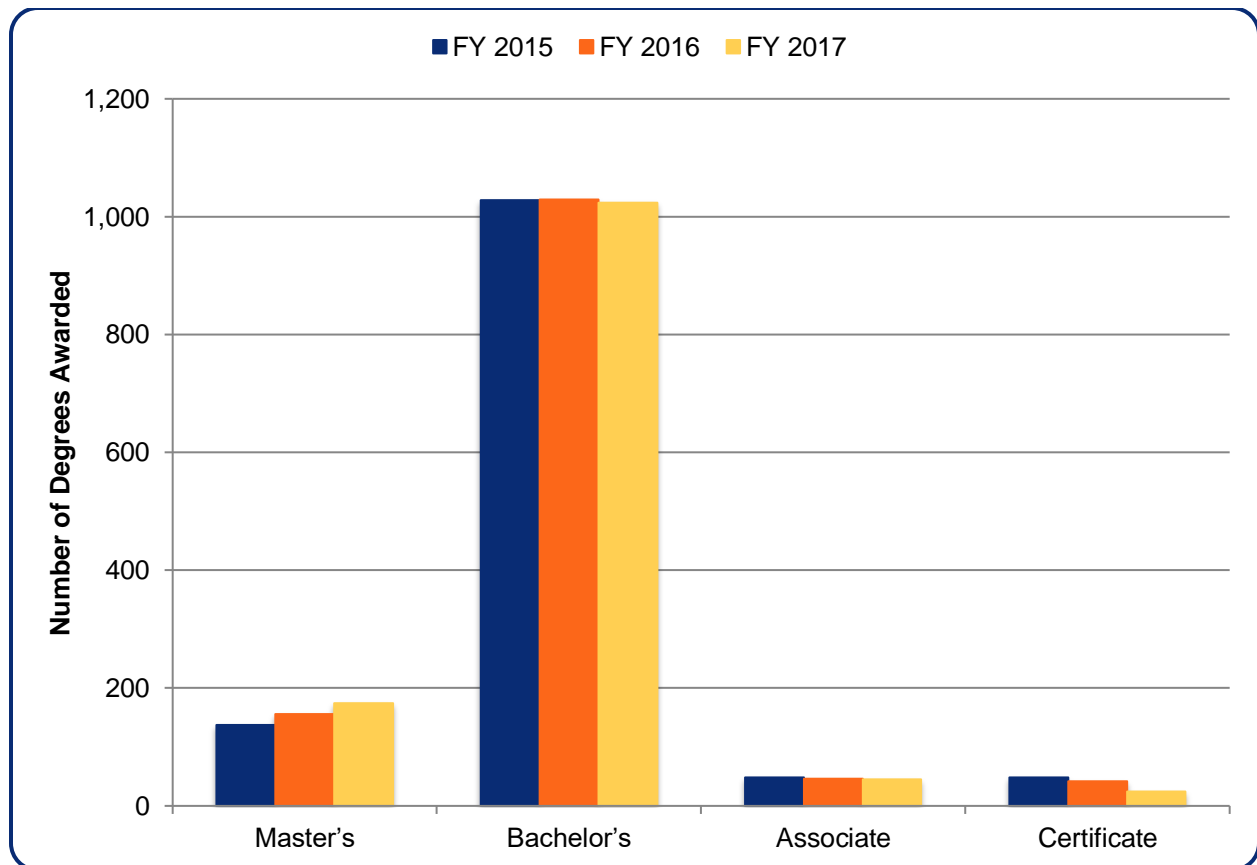
Our Graduates



FY 2015 – 2017 Degrees Conferred

Total Degrees Conferred by Degree Level

	FY 2015	FY 2016	FY 2017
Master's	137	156	174
Bachelor's	1,028	1,029	1,024
Associate	48	46	45
Certificate	48	42	24
Total Degrees	1,261	1,273	1,267



Source: USG Degrees Conferred

Degrees Conferred by College and Major

College of Arts & Sciences

	FY 2015	FY 2016	FY 2017
Master's			
Liberal Studies (MA)	12	7	17
Teaching English (MAT)	3		
Masters of Arts in Teaching (MAT)	1	13	12
Psychology (MS)	14	12	9
Criminal Justice (MSCJ)			1
Teacher Leadership (MED)			1
Total Master's Degrees	30	32	40
Bachelor's			
Middle Level Education (BA)	17	15	11
Integrative Studies (BA, BS)	117	135	143
Music (BA)	7	6	2
Biology (BS)	29	28	36
Communication & Media Studies (BA)	28	25	31
Psychology (BS)	108	101	116
History (BA)	13	15	16
Criminal Justice (BS)	43	49	26
Political Science (BS)	13	8	14
English (BA)	22	18	18
Theatre (BA)	7		
Sociology (BS)	16	9	17
Administrative Management (BAS)	52	66	68
Technology Management (BAS)	26	30	9
Legal Studies (BS)	19	19	19
Chemistry (BS)	7	3	8
Philosophy (BA)	5	4	
Performing Arts (BA)		10	11
Film Production (BA)			2
Total Bachelor's Degrees	529	541	547
Associate			
Associate of Arts; Core Curriculum (AACC; ASCC)	22	25	26
Paralegal Studies (AASPS)	13	9	5
Total Associate's Degrees	35	34	31
Certificate			
Paralegal Studies (CER1)	44	38	23
Total Certificates	44	38	23
Total Degrees	638	645	641

College of Business

	FY 2015	FY 2016	FY 2017
Master's			
General Business (MBA)	63	81	77
Total Master's Degrees	63	81	77
Bachelor's			
General Business (BBA)	21	10	10
Management (BBA)	44	54	51
Accounting (BBA)	33	40	31
Business Marketing and Marketing Management (BBA)	21	25	27
Logistics and Supply Chain Management (BBA)	28	37	26
Total Bachelor's Degrees	147	166	145
Total Degrees	210	247	222

College of Health

	FY 2015	FY 2016	FY 2017
Master's			
Nursing (MSN)	10	9	23
Health Administration (MHA)	29	22	27
Total Master's Degrees	39	31	50
Bachelor's			
Nursing (BSN)	133	128	121
Dental Hygiene (BSDH)	34	28	30
Health Care Management (BS)	108	98	93
Health Fitness Management (BS)	24	24	22
Health Sciences (BS)			6
Total Bachelor's Degrees	299	278	272
Total Degrees	338	309	322

College of Information and Mathematical Sciences

	FY 2015	FY 2016	FY 2017
Master's			
Archival Studies (MAS)	4	12	7
Teaching Mathematics (MAT)	1		
Total Master's Degrees	5	12	7
Bachelors			
Information Technology (BIT; BSIT)	41	27	33
Computer Science (BS)	8	9	26
Mathematics (BS)	4	8	1
Total Bachelor's Degrees	53	44	60
Associate			
Information Technology (AASIT)	11	12	14
Computer Networking Technology (AAS)	2		
Total Associate Degrees	13	12	14
Certificate			
Computer Network Technician	4	4	1
Total Certificates	4	4	1
Total Degrees	75	72	82

Survey of Graduating Students

Clayton State began an annual survey of its graduates in Spring 2008 and it was revised in Spring 2015. Since Spring 2015, the students were required to complete the survey in order to participate in the graduation ceremony, but they are not required to answer all the questions. The data collected from this survey provides useful information about these students during their time at the University and their plans for the future. The following table is a summary of these findings:

	Spring 2014	Spring 2015	Spring 2016	Spring 2017	Spring 2018
# of Respondents	150	483	508	526	529
Age					
Under 21	1.3%	0.2%	0.4%	1.1%	4.2%
21-25	48.0%	40.4%	44.5%	39.9%	46.5%
26-35	20.0%	34.8%	32.3%	32.7%	27.8%
36-55	28.7%	22.2%	21.7%	23.6%	19.3%
Over 55	1.3%	2.5%	1.2%	2.7%	2.3%
Gender					
Male	24.0%	27.1%	26.6%	24.1%	22.3%
Female	75.3%	72.9%	73.4%	75.9%	77.7%
Race/Ethnicity					
Am. Indian or Alaskan Native		0.2%	0.2%	0.0%	0.4%
Asian	3.3%	6.2%	6.3%	6.7%	6.8%
Black	55.3%	63.8%	64.2%	66.3%	69.4%
Hispanic or Latino	2.7%	2.5%	2.8%	3.4%	4.9%
Two or More Races		1.7%	3.0%	1.9%	2.8%
Native Hawaiian or Other Pacific Islander		0.4%	0.0%	0.2%	0.0%
White	28.0%	20.3%	20.7%	18.3%	13.4%
Unknown		5.0%	3.0%	3.2%	2.3%
Degree Type					
Master's		10.1%	12.8%	18.1%	12.9%
Bachelor's	88.7%	88.4%	85.6%	79.5%	81.3%
Associate	2.7%	1.4%	1.2%	2.3%	5.9%
Certificate			0.4%	0.2%	0.0%
Attended school...					
only at Clayton State	26.0%	25.7%	28.2%	28.9%	30.4%
as a full-time student	82.0%	56.1%	54.3%	53.0%	53.7%
received financial aid	93.3%	94.4%	94.9%	93.5%	93.6%
during the... *					
daytime	44.0%	69.4%	69.3%	71.6%	67.1%
evening	23.3%	30.6%	30.7%	28.4%	17.0%
online					15.9%

	Spring 2014	Spring 2015	Spring 2016	Spring 2017	Spring 2018
After completing their degree,					
Employed full-time (on average 30 hours or more per week)		40.2%	41.3%	54.6%	43.7%
Employed part-time (on average less than 30 hours per week)		12.4%	8.3%	11.6%	4.5%
Enrolled in a graduate or professional school program or planning to continue education			16.3%		15.7%
Seeking employment	25.3%	32.7%	30.5%	30.0%	29.9%
Other (U.S. Military, volunteer or service program, etc.)			3.5%		0.6%
Not seeking employment				3.8%	1.3%
Employed after graduation					
A college degree is required and the position is related to my field of study		44.3%	41.7%	32.3%	
Continue your education immediately following graduation from Clayton State (i.e., within the next year)?**					
Currently enrolled in a graduate or professional school program				4.2%	22.9%
Planning to continue my education, but I am not yet enrolled				54.6%	74.7%
Not planning on continuing my education at this time				41.3%	2.4%
Ultimate Goal if planning to continue education					
Additional courses or specialized training	6.7%	9.3%	7.1%	4.2%	3.6%
Another bachelor's degree or certificate	4.0%	2.7%	2.8%	2.6%	1.2%
Associate or Bachelor's Degree			0.6%	3.6%	8.4%
Master's Degree	48.7%	57.1%	55.1%	57.6%	43.4%
Doctoral Degree	18.7%	16.4%	18.1%	23.9%	39.8%
#1 reason for choosing Clayton State					
Nearby Location	34.7%	31.7%	28.3%	29.3%	27.2%
Low cost of attending	12.7%	17.4%	17.7%	21.7%	18.1%
Good academic reputation	8.7%	10.4%	9.6%	11.4%	10.0%
Good faculty	0.7%	4.6%	3.3%	3.2%	2.6%
Liked the social atmosphere		1.2%	2.0%	0.6%	0.8%
Unable to attend first choice school	0.7%	5.4%	6.5%	3.6%	3.6%
Offered the program I wanted	20.0%	20.1%	15.7%	16.7%	17.8%
Liked the size of the college	2.7%	3.1%	2.6%	2.9%	4.2%
Advice of parents or relatives/friends	2.7%	3.1%	5.1%	1.7%	2.1%
Advice of high school staff		1.2%	2.4%	0.2%	0.4%
Wanted to be with friends		1.0%	2.6%	0.4%	0.2%
Able to maintain employment	4.0%	4.1%	4.3%	1.7%	2.3%
Offered financial support	3.3%	2.1%	2.4%	1.5%	1.5%

	Spring 2014	Spring 2015	Spring 2016	Spring 2017	Spring 2018
Satisfaction (the percent of students who evaluated Clayton State as Excellent or Good in response to the areas listed below)					
Intellectual Growth	84.7%	87.4%	86.6%	93.3%	90.2%
Personal growth	81.3%	85.1%	88.4%	89.7%	86.0%
Acquiring knowledge and skills applicable to a specific job or type of work	74.0%	84.9%	82.7%	88.0%	84.9%
Acquiring the background for further education in some professional, scientific, or scholarly field	75.3%	84.1%	82.3%	87.6%	86.8%
Gaining a broad general education about different fields of knowledge	75.3%	84.7%	82.7%	88.6%	85.3%
Gaining a range of information that may be relevant to a career	80.0%	86.5%	84.8%	91.1%	87.9%
Developing an understanding and enjoyment of art, music and drama	51.3%	56.7%	58.3%	59.9%	61.4%
Broadening acquaintance with and enjoyment of literature	63.3%	65.2%	64.8%	66.9%	67.9%
Writing clearly and effectively	80.0%	79.3%	78.7%	89.4%	85.1%
Learning to use computers	66.7%	69.2%	70.1%	79.7%	75.4%
Becoming aware of different philosophies, cultures and ways of life	73.3%	79.7%	77.2%	82.9%	80.2%
Instruction in chose major	80.0%	86.3%	84.8%	92.4%	88.3%
Faculty-student interaction	80.0%	84.3%	84.3%	87.6%	85.4%
Overall instruction	80.0%	86.7%	84.4%	92.2%	87.0%
Academic advising	68.7%	76.4%	75.0%	78.3%	78.1%
Career guidance and counseling	63.3%	66.3%	66.1%	71.3%	69.0%
Student services	68.0%			82.5%	76.9%
Food service on campus	48.7%	48.4%	50.0%	53.2%	49.7%
Financial aid services	71.3%	73.1%	72.4%	75.1%	72.0%
Academic support services (e/g. math, reading, and writing labs, tutorial support and remedial courses)	62.0%	69.6%	70.9%	76.6%	73.0%
Registration process	77.3%	84.1%	80.7%	88.2%	84.9%
Campus sponsored recreation activities	59.3%	68.3%	66.3%	67.7%	63.3%
Library services	70.7%	75.6%	78.3%	85.4%	84.5%
Bookstore service		76.6%	72.6%	78.7%	78.4%
Present attitude toward Associate/Bachelor's Degree major	82.0%	87.8%	84.4%	88.2%	85.3%

*Students were considered attending in daytime if 50% or more of their seated classes were in the daytime since Spring 2015. In addition, students were considered attending online if more than 50% of their courses were fully online.

** For Spring 2016, the primary status included both employment and continued education options. Since Spring 2017, employment and continued education questions are separated.

