

The Care and Feeding of the Zebra Label Printer model 105Se

CSU Library – Collection and Resource Management



Downloading the Printer Driver

We have the Zebra thermal transfer printer model 105Se. This model is no longer serviced by Zebra, as of December 31, 2006. When searching on Zebra.com for the driver download, search for the 105SL model, which replaced the 105Se.

Driver - Search Results - Microsoft Internet Explorer

Address: http://www.zebra.com/id/zebra/na/en/index/drivers_downloads/drivers/results.html?productType=7

Printing Solutions for Business Improvement

Home | Login | Create Profile | Contact Zebra

Select Language

Search [GO] Find it Now

Bookmark This Page

INDUSTRY SOLUTIONS PRODUCTS HOW TO BUY **DRIVERS & DOWNLOADS** SERVICE & SUPPORT RESOURCE LIBRARY ABOUT ZEBRA PARTNERS

DRIVERS UTILITIES FIRMWARE

Home > Drivers & Downloads > Drivers > Driver - Search Results

Driver - Search Results

105SL

Drivers available for this printer are displayed below.

Show Me: [Recommended Drivers](#) | [Supported Drivers](#)

Recommended Drivers

Driver	Version	Size	Operating Systems	Release Date	Download File
Zebra Universal Driver v5.5.7.19	5.5.7.19	2 MB	Windows 2000, Windows 95, Windows ME, Windows 98, Windows NT, Windows XP, Windows 2003	14 Dec 2006	Download
ZebraDesigner Driver (Compatible with Windows Vista)	1.3.08	9 MB	Windows 2000, Windows 95, Windows ME, Windows 98, Windows NT, Windows XP, Windows 2003	24 May 2007	Download

Supported Drivers

Driver	Version	Size	Operating Systems	Release Date	Download File
WindowsNT/2000 - Bar Code Driver v2.4	v2.4	921 Kb	Windows NT, Windows 2000	23 Jul 2001	Download

The only driver offered that works with our older model printer is the **WindowsNT/2000 – Bar Code Driver v2.4**. The Zebra Universal Driver and the Zebra Designer Driver will not work.

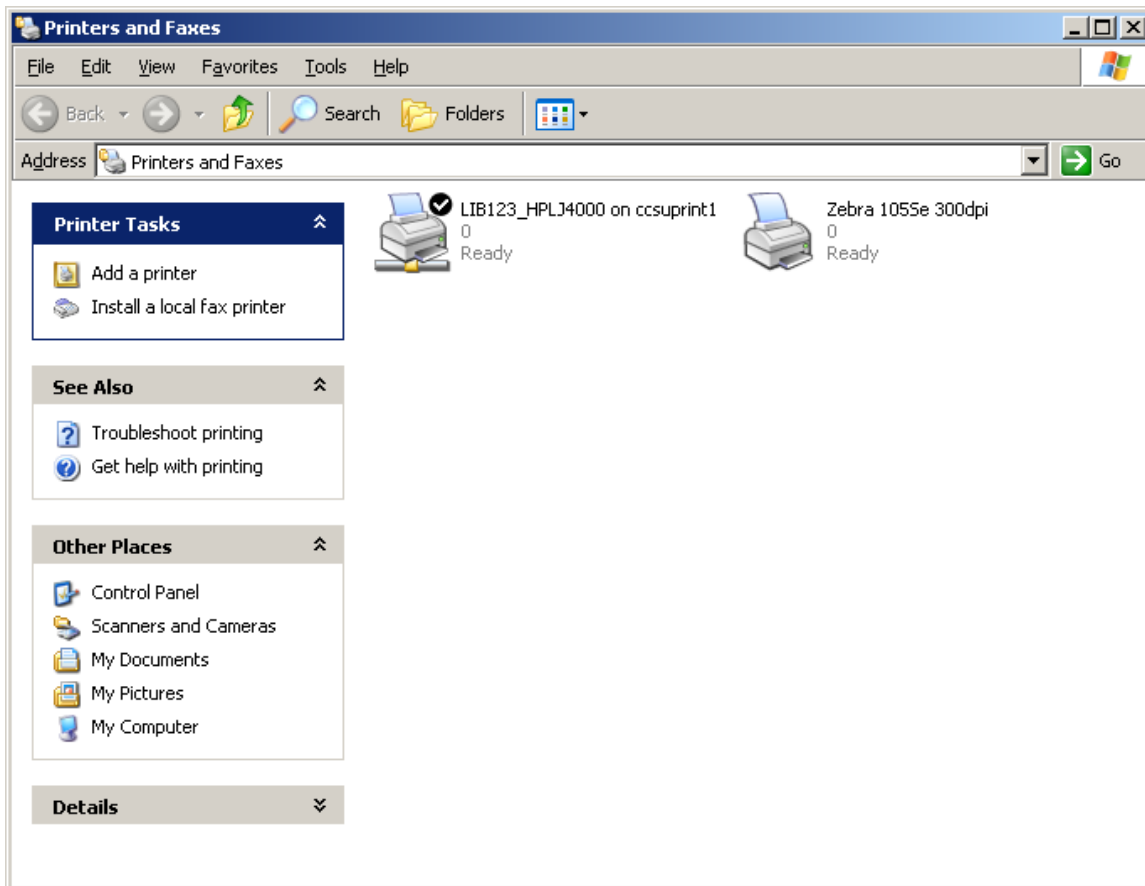
As of 3-25-09, the **WindowsNT/2000 – Bar Code Driver v.2.4** was still available at Zebra.com. However, there will also be a copy on the CSU Group Shares. The file name is **ntdrv2-4.exe**.

http://www.zebra.com/id/zebra/na/en/index/drivers_downloads/drivers/results.html?productType=7

Installing the Printer Driver

The zipped file **ntdrv2-4.exe** is not a self-executable file. Download the file to the desktop and double-click to unzip. Make a note of which folder the files unzip to.

1. From the desktop, click “Start”, then “Printers and Faxes”. From the Printers window, double click “Add a Printer” on the left.



2. In the Add Printer Wizard window, select the “Local Printer” option. **Do not** check the box to automatically detect a Plug and Play printer. Click Next.

Add Printer Wizard


Local or Network Printer
The wizard needs to know which type of printer to set up.

Select the option that describes the printer you want to use:

Local printer attached to this computer

Automatically detect and install my Plug and Play printer

A network printer, or a printer attached to another computer

 To set up a network printer that is not attached to a print server, use the "Local printer" option.

< Back Next > Cancel

3. Select the LPT1 Printer Port. Click Next.


Add Printer Wizard

Select a Printer Port
Computers communicate with printers through ports.

Select the port you want your printer to use. If the port is not listed, you can create a new port.

Use the following port: LPT1: (Recommended Printer Port)

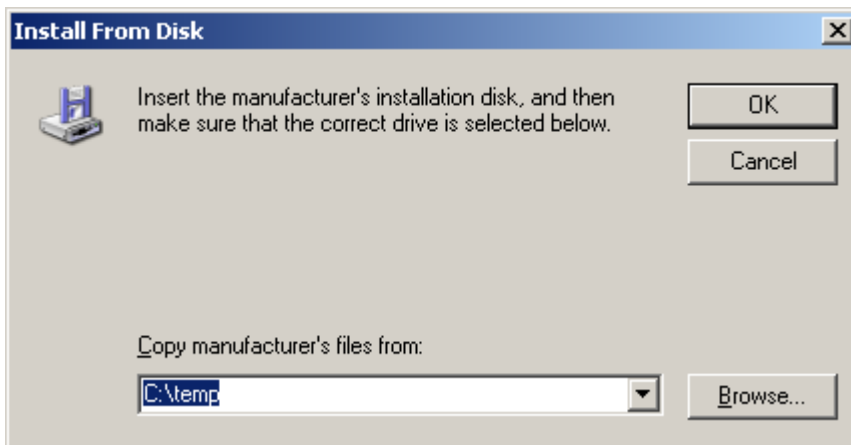
Note: Most computers use the LPT1: port to communicate with a local printer. The connector for this port should look something like this:



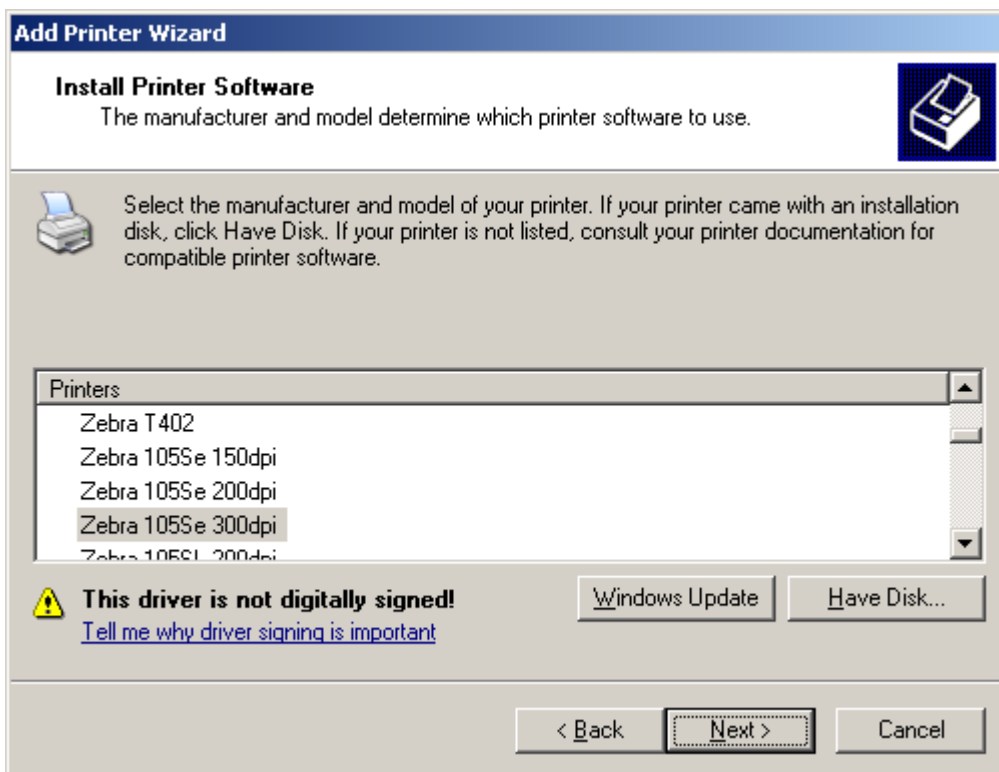
Create a new port:
Type of port: Local Port

< Back Next > Cancel

4. At the Install Printer Software screen, click “Have Disk”. At the Install From Disk window, type the file path where the driver files unzipped (most likely C:\Temp) and click OK.



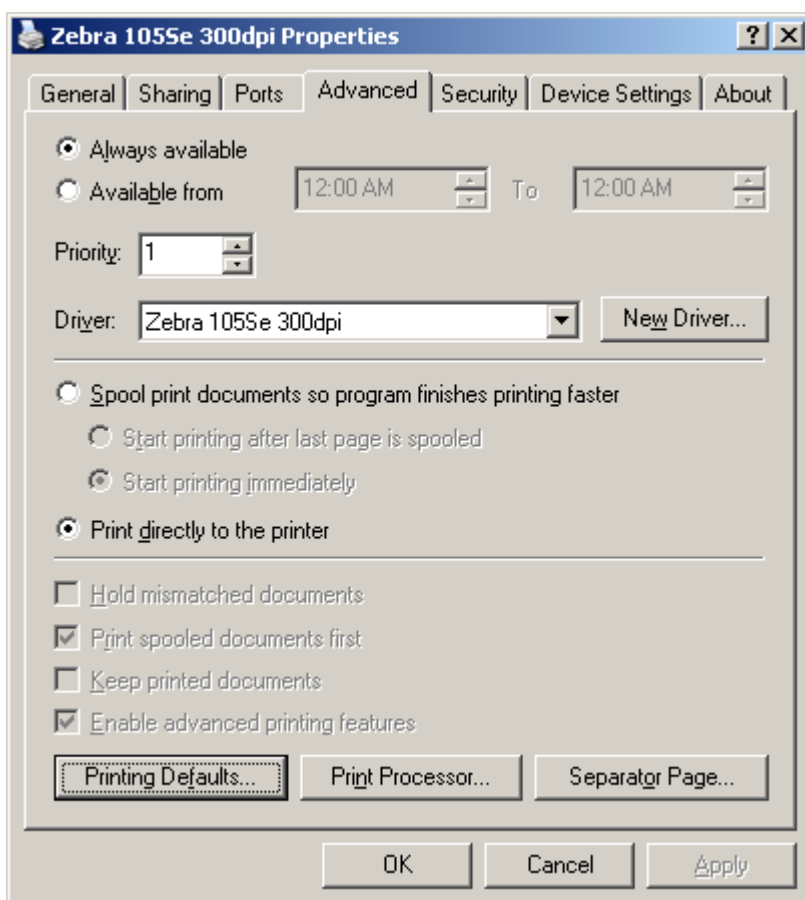
5. Back at the Install Printer Software screen, choose **Zebra 105Se 300dpi** from the list which appears and click “Next”.



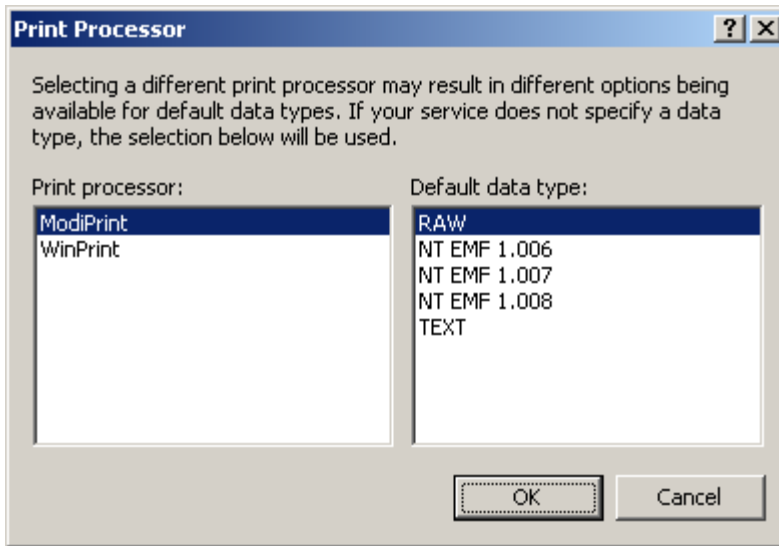
6. At the next window, indicate that the printer is not shared. Click “Next”.
7. Click “Finish” to complete the installation.

Printer Properties

1. In the Printers and Faxes window, right click on the Zebra Printer. Choose “Properties”.
2. Choose the option “Print directly to the printer”.
3. Under the “Advanced” tab, click “Print Processor” at the bottom.



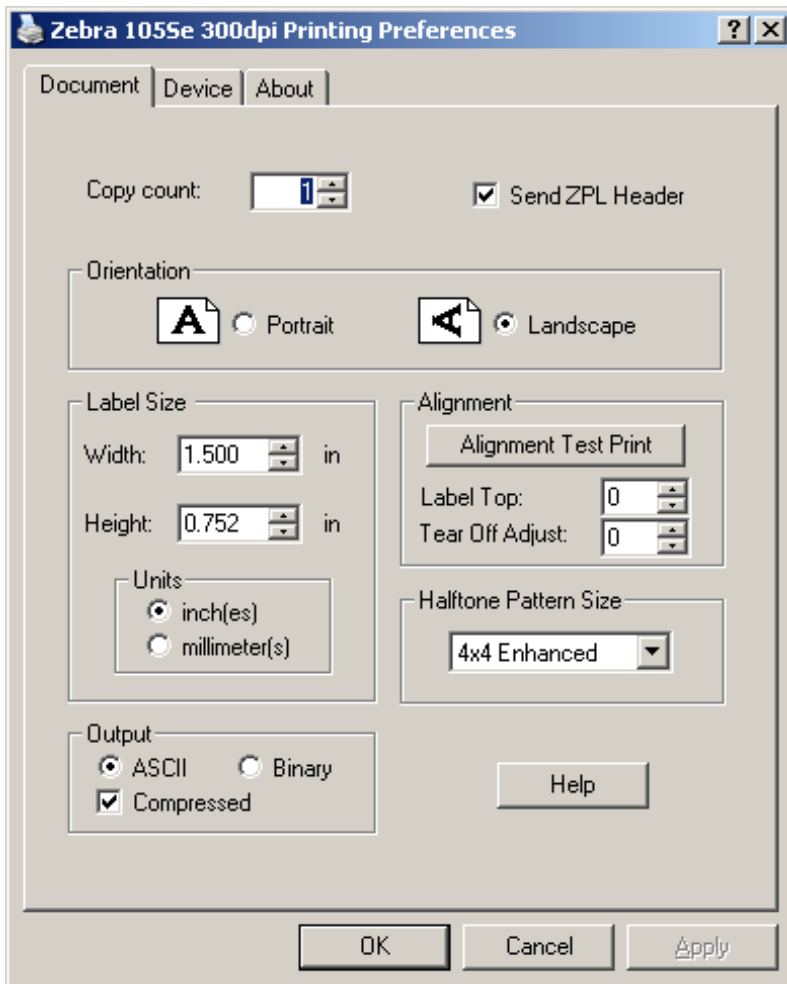
4. When running the NT driver on XP, “ModiPrint” works better than the default “WinPrint”. Choose Print processor “**ModiPrint**” and Data type “**RAW**”.



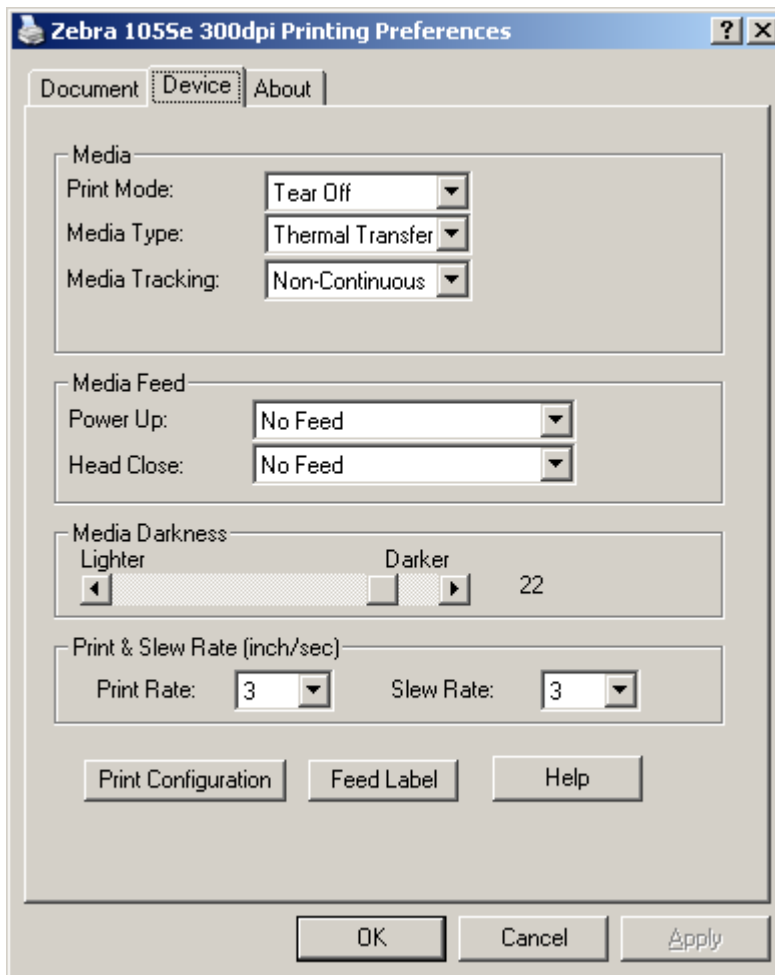
5. Click “Apply” and close the Properties window.

Printing Preferences

1. In the “Printers and Faxes” window, right click the Zebra printer and choose “Printing Preferences”.
2. Under the Document tab, change Orientation to “**Landscape**” and set the Label Size to: **width 1.500 in.** and **height 0.752 in.**



3. Under the Device tab, set the various fields to match the screen shot below.

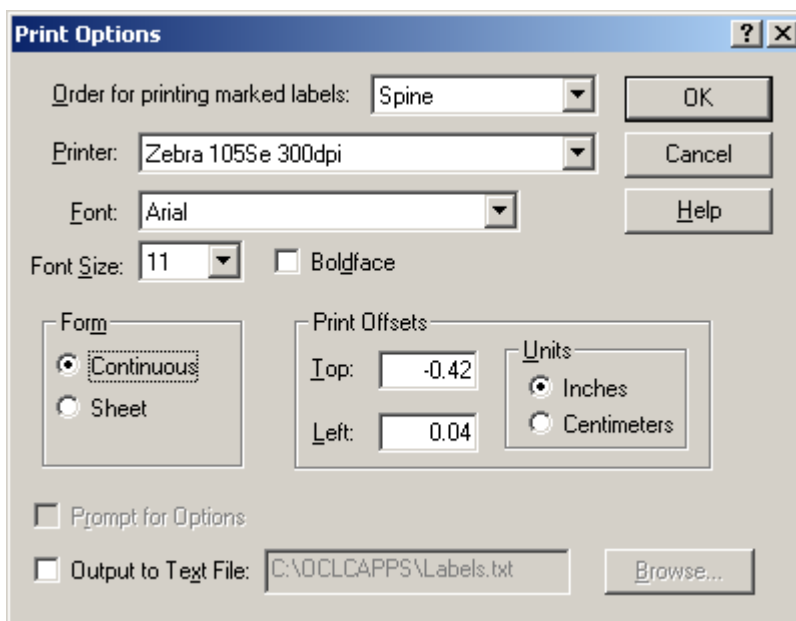


Using the Zebra Printer with the OCLC Cataloging Label Program

1. Within the OCLC Cataloging Label Program, click Options, Format and choose **SP1-Spine**.
2. Options, Print... brings up the Print Options window. Set its various settings to match the screen shot below. (Note that the Top Offset is a **negative number**.)

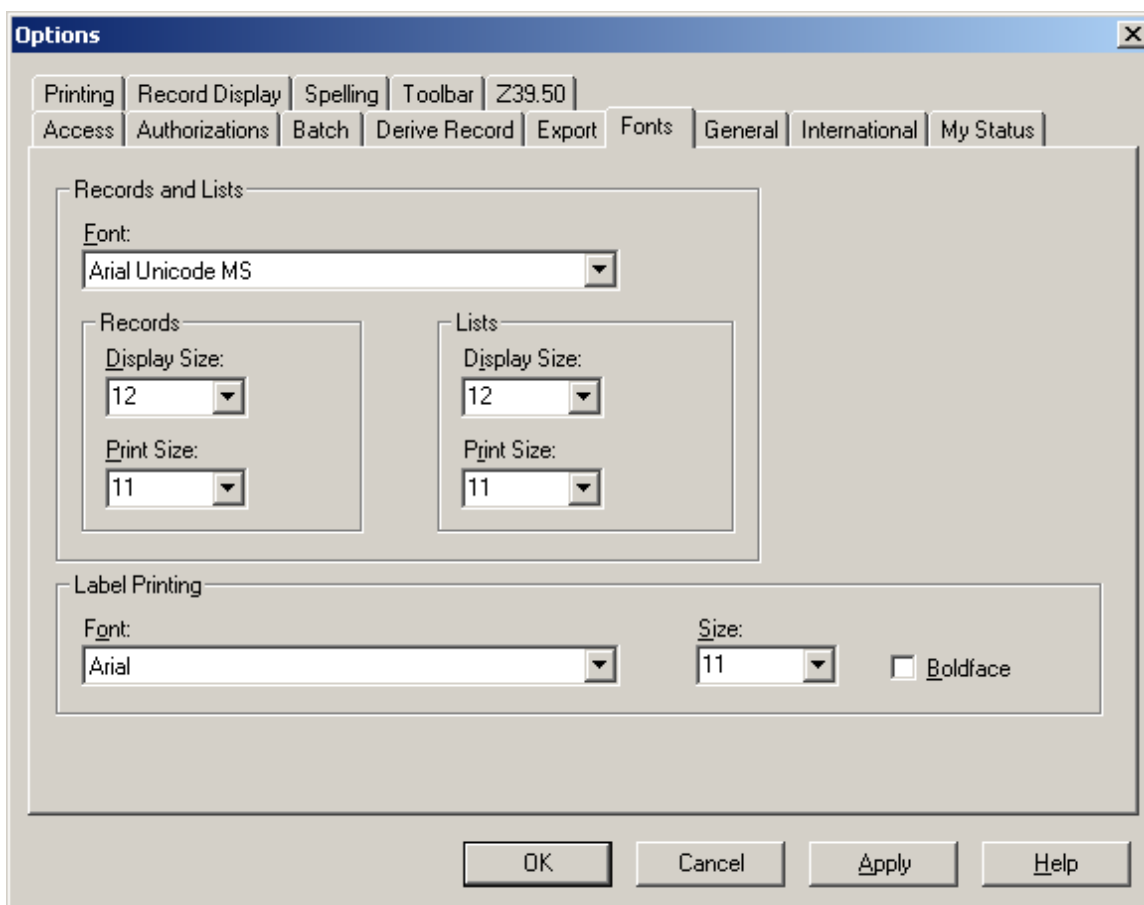
*** These print offset settings allow for 6 lines of text per label with approx. 8-9 characters per line. With labels for Added Volumes, it is sometimes necessary to adjust these offsets.

- For a 7 line label, change the top offset to **-0.47**.
- For an 8 line label, change the top offset to **-0.46** and change the font to **9 pt.** size.

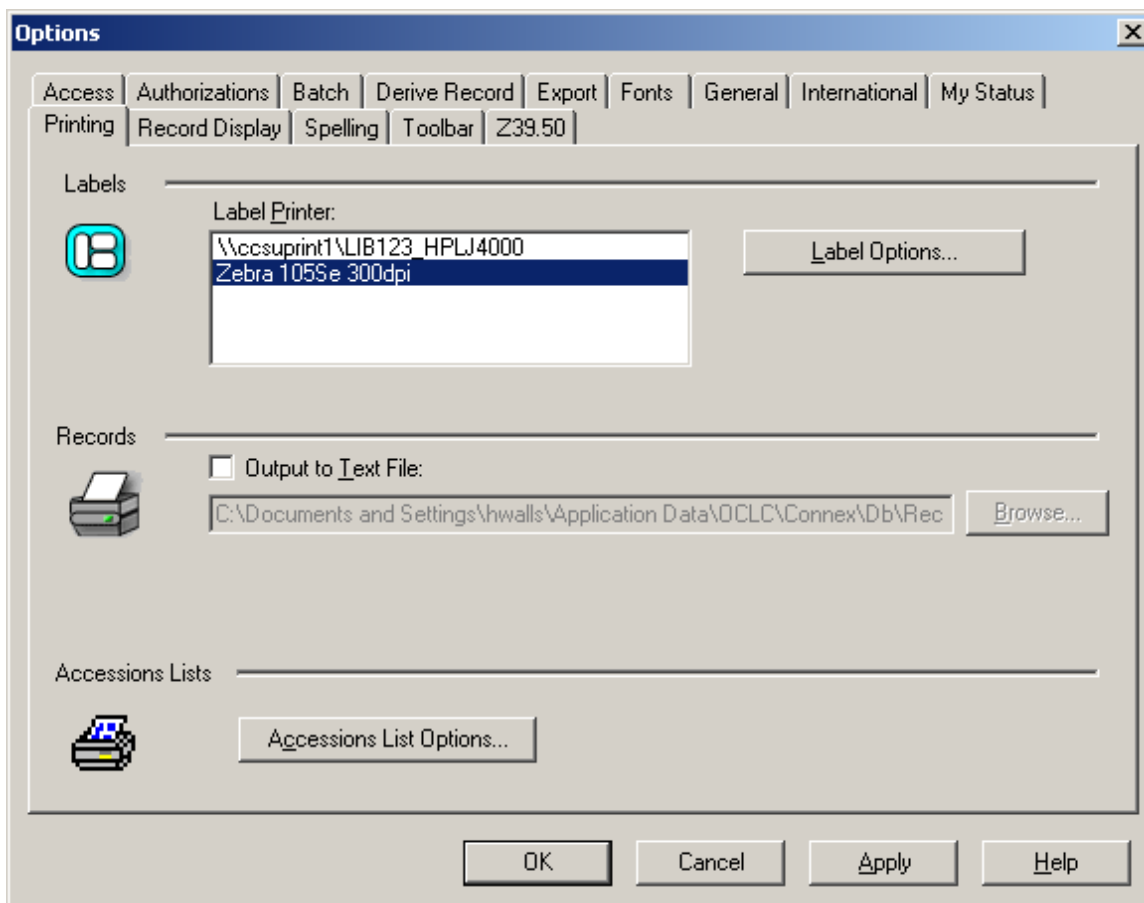


Using the Zebra Printer with the OCLC Connexion Client

1. Within the Connexion Client, click Tools, Options...
2. Under the Fonts tab, set the label printing Font to **Arial** and Size to **11**.



3. Under the Printing tab, choose the Zebra printer as the Label Printer.



- Click “Label Options”. Choose Format: **SP1-Spine**, Form: **Continuous**, and Print Offsets of **Top -0.42** and **Left 0.04** inches.

Label Printing Options

Format

- SL4 - Spine, Two Four-Line Pockets
- SL6 - Spine, Two Six-Line Pockets
- SLB - Spine, One Four-Line Pocket
- SP1 - Spine

Print Offsets

Top:

Left:

Units

- Inches
- Centimeters

Form

- Continuous
- Sheet

Tag on Pocket Label:

Prompt for Options

Output to Text File:

- Click “Define Automatic Stamps” to set the most commonly used automatic stamps (GMJ1 = A-V Aud CD, etc.)

Define Automatic Stamps

Automatic Stamp:

- Use as default automatic stamp
- Assign automatic stamp to holding library code

- Place stamp above call number
- Place stamp below call number

Automatic Stamps Defined:

- GMJ1
- GMJV
- GMJ2
- GMJB

- Apply the changes and exit the Options window.